

20310

SWOLF-NINE DEPARTURE (SWOLF9 • SWOLF)

MIRAMAR MCAS (JOE FOSS FLD) (KNKX)

SAN DIEGO, CALIFORNIA

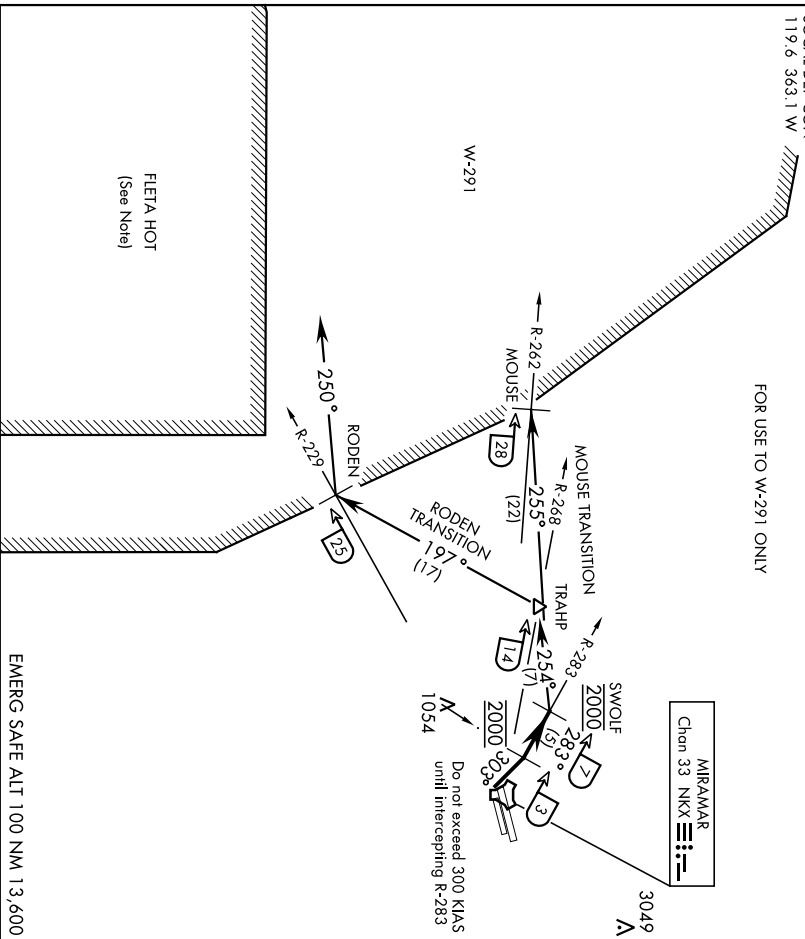
ATS ★ 133.4/75 352.0
CLNC DEL
125.975 254.325
GND CON
128.625 307.325
FOSS TOWER ★
135.2 298.925
SOCAL DEP CON
119.6 363.1 W

SHL-903 [USN]

Rwy	Knots	60	120	180	240	300	360
24L/R	V/V[ft/min]	780	1560	2340	3120	3900	4680

ATC Climb Rate to 2000

FOR USE TO W-291 ONLY



DEPARTURE ROUTE DESCRIPTION

TAKE-OFF RWWY 24L/R: Climbing right turn to 2000 via heading 303° to intercept and proceed via NKX TACAN R-283 to SWOLF. Complete turn within NKX 2 DME. Cross NKX R-283/3 DME at 2000 mandatory. Maintain 2000 at SWOLF mandatory. Thence...

MOUSE TRANSITION (SWOLF9 • MOUSE): Turn left heading 255° to intercept NKX R-262 at MOUSE. Maintain 2000 for entry into W-291.

(Continued on next page)

SWOLF-NINE DEPARTURE (SWOLF9 • SWOLF)

Orig 10OCT19

SAN DIEGO, CALIFORNIA
MIRAMAR MCAS (JOE FOSS FLD) (KNKX)

SWOLF-NINE DEPARTURE (SWOLF9 • SWOLF)

MIRAMAR MCAS (JOE FOSS FLD) (KNKX)
SAN DIEGO, CALIFORNIA

SHL-903 [USN]

DEPARTURE ROUTE DESCRIPTION
(Continued)

RODEN TRANSITION (SWOLF9 • RODEN): Turn left heading 254 ° to intercept
NKX R-268 at TRAHF. Then turn left heading 197° to intercept NKX R-229 at RODEN.
Maintain 2000 for entry into W-291 via heading 250°.

NOTE:

- (1) FLETA HOT-ACTIVE FIRING AREA (DANGER, REMAIN CLEAR).
- (2) ALL AIRCRAFT SHOULD MAINTAIN LAST ASSIGNED HEADING/RADIAL
AND ALTITUDE TO AVOID INBOUND MILITARY OR CIVIL AIRCRAFT AT
HIGHER ALTITUDES!

SWOLF-NINE DEPARTURE (SWOLF9 • SWOLF)

Orig 10OCT19

SAN DIEGO, CALIFORNIA
MIRAMAR MCAS (JOE FOSS FLD) (KNKX)