

20310

TINNY-FOUR DEPARTURE (TINNY4 • TINNY)

MIRAMAR MCAS (JOE FOSS FLD) (KNKX)

SAN DIEGO, CALIFORNIA

SHL-903 [USN]

Rwy	Knots	60	120	180	240	300	360
24L/R	V/V[fpn]	780	1560	2340	3120	3900	4680

ATC Climb Rate to 2000

ATIS ★ 133.475 352.0
 CLNC DEL 125.975 254.325
 GND CON 128.625 307.325
 FOSS TOWER ★ 135.2 298.925
 SOCIAL DEP CON 119.6 363.1 W

SHAFTER
115.4 EHF
Chan 101
L-3-1L7-H-4

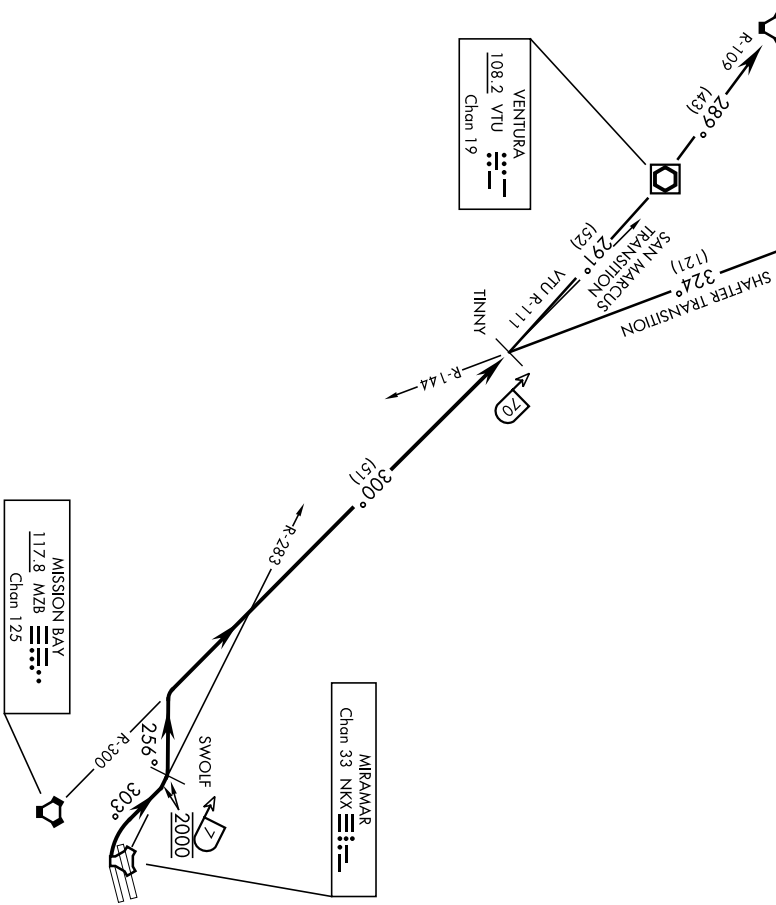
SAN MARCUS
114.9 RZS
Chan 96
L-3-1L4-L7-H-4

VENTURA
108.2 VTU
Chan 19

MIRAMAR
Chan 33 NKX

MISSION BAY
117.8 MZB
Chan 125

DO NOT EXCEED 300 KIAS
UNTIL INTERCEPTING R-283



EMERG SAFE ALT 100 NM 13,600

TINNY-FOUR DEPARTURE (TINNY4 • TINNY)

Orig 10OCT19

SAN DIEGO, CALIFORNIA
MIRAMAR MCAS (JOE FOSS FLD) (KNKX)

NOTE: Chart not to scale

20310

TINNY-FOUR DEPARTURE (TINNY4•TINNY)

MIRAMAR MCAS (JOE FOSS FLD) (KNKX)
SAN DIEGO, CALIFORNIA

SHL-903 [USN]

DEPARTURE ROUTE DESCRIPTION



TAKE-OFF RWY 24L/R: Climbing right turn to 2000 heading 303° to intercept and proceed via NKX TAGAN R-283 to SWOLF. Complete turn within NKX 2 DME. Cross NKX R-283/3 DME at 2000 mandatory. Maintain 2000 at SWOLF mandatory. Then turn left heading 256 to intercept and proceed via MZB VORTAC R-300 to TINNY int. Thence...

SAN MARCUS TRANSITION (TINNY4•RZS): Via VTU VOR/DME R-1111 to VTU, then via RZS VORTAC R-109 to RZS.

SHAFTER TRANSITION (TINNY4•EHF): Via EHF VORTAC R-144 to EHF.

TINNY-FOUR DEPARTURE (TINNY4•TINNY)

Orig 10OCT19

SAN DIEGO, CALIFORNIA
MIRAMAR MCAS (JOE FOSS FLD) (KNKX)