

# TACAN Y RWY 24R

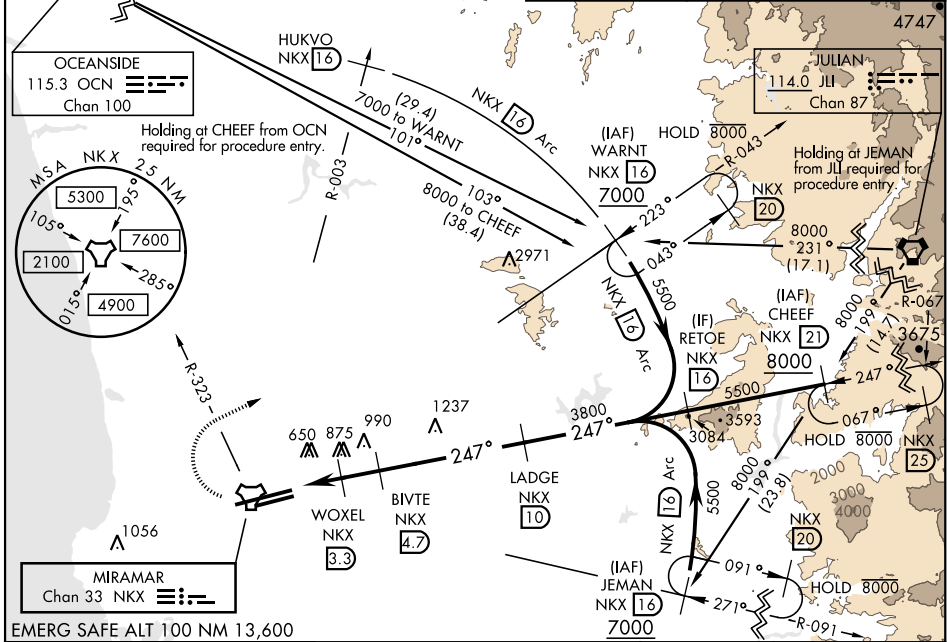
TACAN NKX Chan <b>33</b>	APCH CRS <b>247°</b>	Rwy ldg TDZE 24R <b>12,000</b> 475 Arprt Elev 24L <b>477</b>	24L <b>8001</b> 477	AL-903 [USN] MIRAMAR MCAS (JOE FOSS FLD) (KNKX)
-----------------------------	-------------------------	--	------------------------	--

ALSIF-1
 

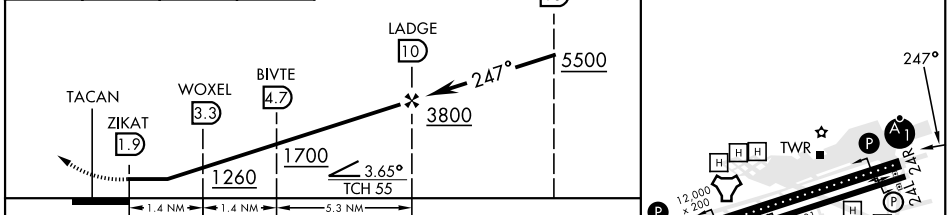

 MISSED APPROACH: Climb to 1500, then climbing right turn to 7000 via NKX TACAN R-003 to HUKVO. Arc NE of NKX via the 16 mile arc to WARTN and hold. Cross NKX R-323 at 3000 mandatory, cross HUKVO at 6000 mandatory.

ATIS ★ <b>133.475</b> <b>352.0</b>	SOCAL APP CON <b>132.2</b> <b>269.1</b>	FOSS TOWER ★ <b>135.2</b> <b>298.925</b>	GND CON <b>128.625</b> <b>307.325</b>	CLNC DEL <b>125.975</b> <b>254.325</b>	LA CENTER <b>291.7</b>	ASR/ PAR
--	---	--	---	--	---------------------------	-------------

Knots	60	120	180	240	300	360
V/V(fpm)	275	550	825	1100	1375	1650
ATC climb of 275 ft/NM to 6000						



1500	7000	HUKVO NKX 16	Arc NE 16	VGSI and descent angles not coincident.	ELEV 477	TDZE 24R 475	TDZE 24L 477
------	------	--------------	-----------	---	----------	--------------	--------------



CATEGORY	A	B	C	D
S-24R *	1140-1/2	665 (700-1/2)	1140-1 1/2	665 (700-1 1/2)
SIDE-STEP 24L	1140-1	663 (700-1)	1140-1 1/8	1140-2
CIRCLING	1140-1	663 (700-1)	1140-1 1/8	1180-2 1/4

HIRL Rwy 6L-24R  
 HIRL Rwy 6R-24L

# TACAN Y RWY 24R

SW-3, 28 NOV 2024 to 26 DEC 2024

SW-3, 28 NOV 2024 to 26 DEC 2024