

VITKO-THREE DEPARTURE (VITK03 • VITKO)

MIRAMAR MCAS (JOE FOSS FLD) (KNKX)

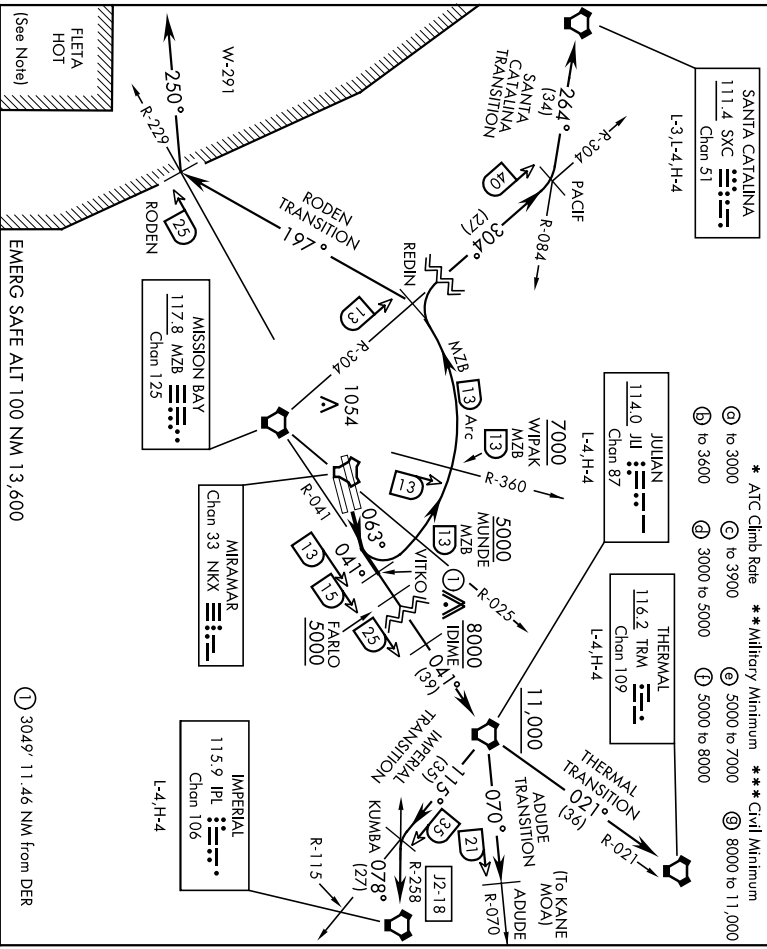
SAN DIEGO, CALIFORNIA

ATIS * 133.475 352.0
 CLINC DEL
 123.975 234.325
 GND CON
 128.625 307.325
 FOSS TOWER *
 135.2 298.925
 SOCIAL DEP CON
 132.2 269.1 E

AL-903 [USN]

Rwy	Knots	60	120	180	240	300	360
* 6L/R	V/V(fpm)	570	1040	1560	2080	2600	3120
** 6L/R	V/V(fpm)	280	560	840	1120	1400	1680
*** 6L/R	V/V(fpm)	300	600	900	1200	1500	1800
* 6L/R	V/V(fpm)	880	1360	2040	2720	3400	4080
* 6L/R	V/V(fpm)	353	706	1059	1412	1765	2118
* 6L/R	V/V(fpm)	300	600	900	1200	1500	1800
* 6L/R	V/V(fpm)	220	440	660	880	1100	1320

* ATC Climb Rate ** Military Minimum *** Civil Minimum
 (A) to 3000 (B) to 3600 (C) to 3900 (D) 5000 to 8000 (E) 5000 to 7000 (F) 8000 to 11,000



DEPARTURE ROUTE DESCRIPTION

TAKEOFF Rwy 6L/R: Climb via heading 063° to intercept and proceed via MZB VORTAC R-041 to VITKO. Join MZB R-041 at or above 3000. Thence...

ADUDE TRANSITION (VITK03 • ADUDE): Via MZB R-041 to JII VORTAC. Then JII R-070 to ADUDE. Cross FARLO at or above 5000. Cross IDIME at or above 8000. Cross JII VORTAC at or above 11,000. (To operate in KANE MOA.)

IMPERIAL TRANSITION (VITK03 • IPI): Via MZB R-041 to JII VORTAC. Then via JII R-115 to KUMBA INT, then via IPI VORTAC R-258 to IPI. Cross FARLO at or above 5000. Cross IDIME at or above 8000. Cross JII VORTAC at or above 11,000.

(Continued on next page)

VITKO-THREE DEPARTURE (VITK03 • VITKO)

Orig 13SEP18

SAN DIEGO, CALIFORNIA
 MIRAMAR MCAS (JOE FOSS FLD) (KNKX)

22111

VITKO-THREE DEPARTURE (VITK03 • VITKO)

MIRAMAR MCAS (JOE FOSS FLD) (KNKX)
SAN DIEGO, CALIFORNIA

AL-903 [USN]

DEPARTURE ROUTE DESCRIPTION

(Continued)

RODEN TRANSITION (VITK03 • RODEN): Arc N of MZB VORTAC

via the 13 mile arc to REDIN. Then turn left heading 197° to intercept NKK R-229 at RODEN. Then turn right heading 250° for entry into W-291. Cross MUNDE at or above 5000. Cross WIPAK at or above 7000.

SANTA CATALINA TRANSITION (VITK03 • SXC): Arc N of MZB VORTAC

via the 13 mile arc to REDIN. Then via MZB R-304 to PACIF INT. Then via SXC R-084 to SXC VORTAC. Cross MUNDE at or above 5000. Cross WIPAK at or above 7000.

THERMAL TRANSITION (VITK03 • TRM): Via MZB R-041 to JII VORTAC. Then via JII R-021 to TRM VORTAC. Cross FARLO at or above 5000. Cross IDIME at or above 8000. Cross JII VORTAC at or above 11,000.

NOTE:

- (1) FLETA HOT-ACTIVE FIRING AREA (DANGER, REMAIN CLEAR)
- (2) ALL AIRCRAFT SHOULD MAINTAIN LAST ASSIGNED HEADING/RADIAL AND ALTITUDE TO AVOID INBOUND MILITARY OR CIVIL AIRCRAFT AT HIGHER ALTITUDES!

VITKO-THREE DEPARTURE (VITK03 • VITKO)

Orig 13SEP18

SAN DIEGO, CALIFORNIA
MIRAMAR MCAS (JOE FOSS FLD) (KNKX)