

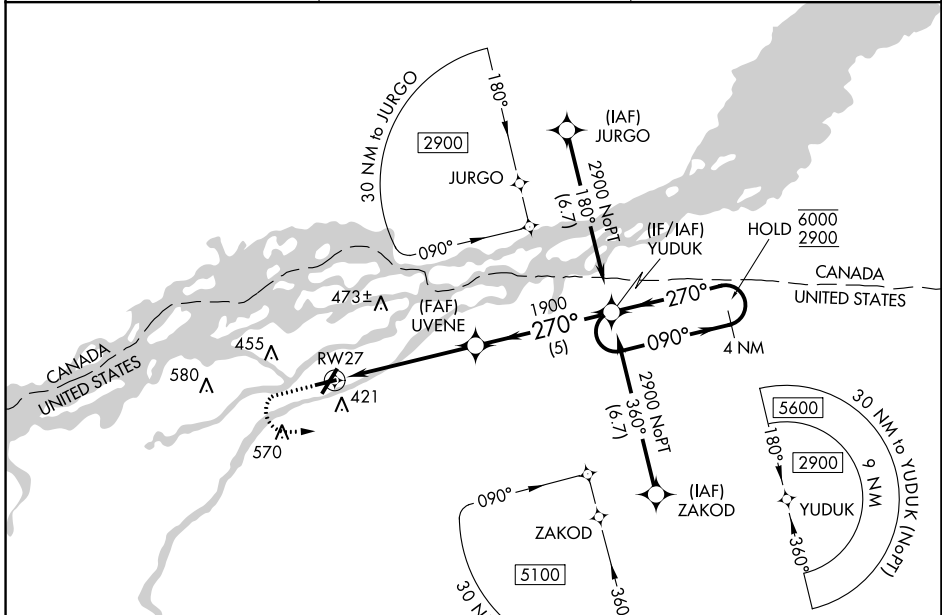
APP CRS 270°	Rwy Idg 4000
	TDZE 205
	Apt Elev 221

RNAV (GPS) RWY 27

MASSENA INTL-RICHARDS FLD (MSS)

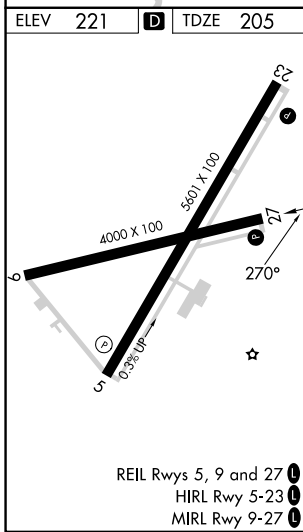
RNP APCH - GPS.		MISSED APPROACH: Climb to 1000 then climbing left turn 2900 direct YUDUK and hold.
▼ Rwy 27 helicopter visibility reduction below 1 SM NA. ▲ Straight-in Rwy 27 NA at night, Circling Rwy 9, 23, 27 NA at night.		

ASOS 128.075	BOSTON CENTER 135.25 377.1	UNICOM 123.0 (CTAF) 0
------------------------	--------------------------------------	---------------------------------



NE-2, 28 NOV 2024 to 26 DEC 2024

NE-2, 28 NOV 2024 to 26 DEC 2024



1000	2900	YUDUK	Visual Segment - Obstacles.	4 NM Holding Pattern
UVENE YUDUK RWY 27 1900 270° 090° → 6000 ← 270° 2900				
5.2 NM		5 NM		
CATEGORY	A	B	C	D
LNAV MDA	680-1	475 (500-1)	680-1 $\frac{3}{8}$	475 (500-1 $\frac{3}{8}$)
C CIRCLING	740-1	519 (600-1)	880-1 $\frac{3}{4}$ 659 (700-1 $\frac{3}{4}$)	880-2 659 (700-2)