


WAAS CH 78099 W15A	APP CRS 153°	Rwy ldg TDZE 1015 Apt Elev 1015	9997
----------------------------------------	------------------------	-----------------------------------------------------	-------------

RNAV (GPS) RWY 15

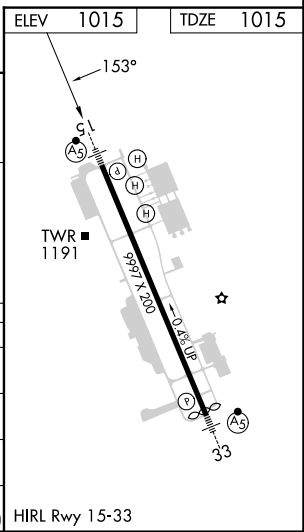
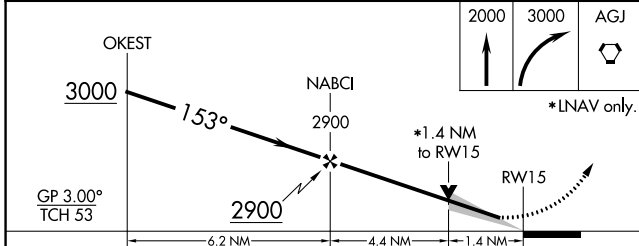
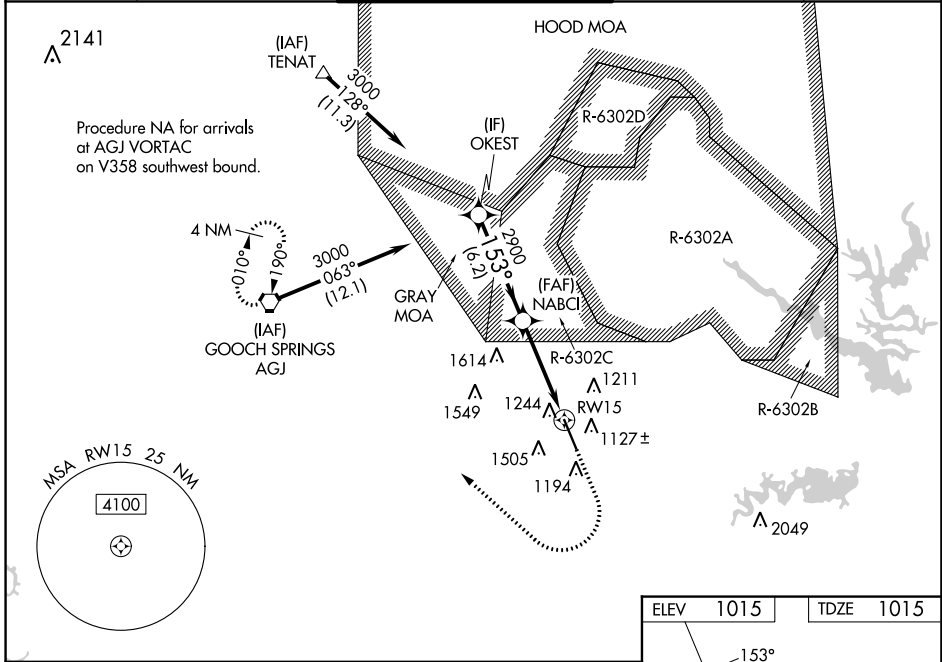
ROBERT GRAY AAF (GRK)

RNP APCH - GPS.

▽ For uncompensated Baro-VNAV systems, LNAV/VNAV NA below -17°C or above 54°C. Circling NA west of Rwy 15-33.
△ For inop ALS, increase LPV Cat E visibility to RVR 4000, LNAV/VNAV all Cats visibility to 1 3/8 SM and LNAV Cats C/D/E visibility to 1 3/8 SM.
RVR 1800 authorized with the use of FD or AP or HUD to DA.

MALSR

MISSED APPROACH: Climb to 2000 then climbing right turn to 3000 direct AGJ VORTAC and hold.

ATIS 124.9	GRAY APP CON 120.075 323.15	GRAY TOWER 120.75(CTAF) 285.5	GND CON 121.8 279.5	CLNC DEL 126.2 251.1
-----------------------------	----------------------------------------------	------------------------------------------------	--------------------------------------	---------------------------------------



CATEGORY	A	B	C	D	E
LPV DA #	1215/24		200 (200-1/2)		
LNAV/VNAV DA	1531/55		516 (600-1)		
LNAV MDA	1520/24	505 (600-1/2)	1520/55		505 (600-1)
CIRCLING	1540-1	525 (600-1)	1560-1 1/2 545 (600-1 1/2)	1620-2 605 (700-2)	1740-2 1/2 725 (800-2 1/2)

SC-3, 28 NOV 2024 to 26 DEC 2024

SC-3, 28 NOV 2024 to 26 DEC 2024