

WAAS CH <b>43569</b> <b>W14A</b>	APP CRS <b>144°</b>	Rwy Idg <b>7345</b> TDZE <b>119</b> Apt Elev <b>153</b>
--	------------------------	---

# RNAV (GPS) Z RWY 14

MONMOUTH EXEC (BLM)

RNP APCH - GPS.

▼ For uncompensated Baro-VNAV systems, LNAV/VNAV NA below -15°C or above 54°C. Rwy 14 helicopter visibility reduction below 3/4 SM NA. When local altimeter setting not received, use Lakehurst altimeter setting and increase all DA by 39 feet. Baro-VNAV NA when using Lakehurst altimeter setting.

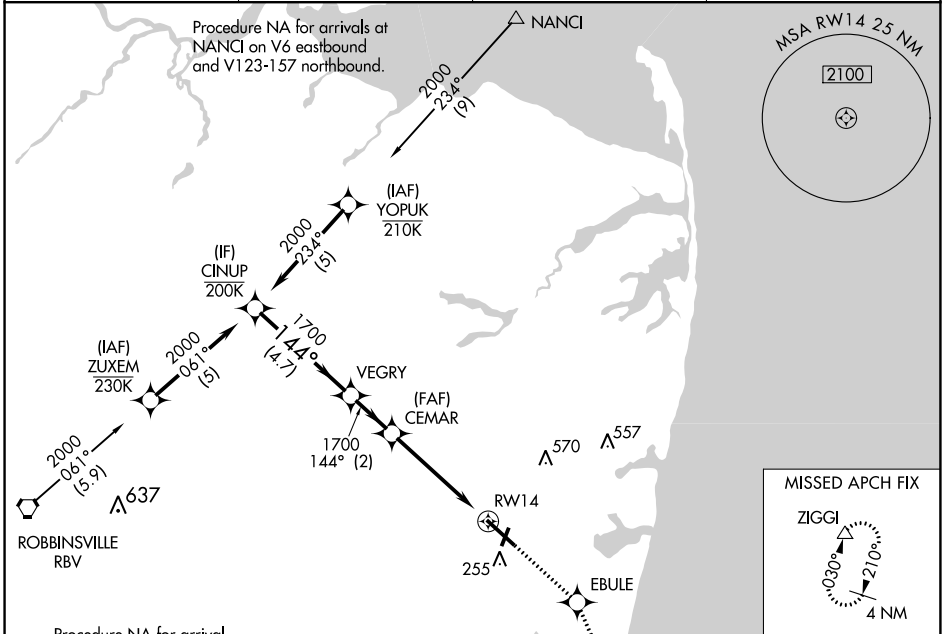
MISSED APPROACH:  
Climb to 2000 direct  
EBULE, track 169° to  
ZIGGI and hold.

AWOS-3PT  
**121.625**

MC GUIRE APP CON  
**126.475 363.8**

CLNC DEL  
**126.15**

UNICOM  
**123.0** (CTAF)



NE-2, 28 NOV 2024 to 26 DEC 2024

NE-2, 28 NOV 2024 to 26 DEC 2024

ELEV 153	TDZE 119
----------	----------

