

| | | |
|--|------------------------|---|
| WAAS CH 78572 W32A | APP CRS 324° | Rwy Idg 7345 TDZE 153 Apt Elev 153 |
|--|------------------------|---|

RNAV (GPS) Z RWY 32

MONMOUTH EXEC (BLM)

RNP APCH - GPS.

⚠ For uncompensated Baro-VNAV systems, LNAV/VNAV NA below -15°C or above 54°C.
⚠ Rwy 32 helicopter visibility reduction below 3/4 SM NA. When local altimeter setting not received, use Lakehurst altimeter setting and increase LPV DA to 442 feet, increase LNAV/VNAV DA to 442 feet. Baro-VNAV NA when using Lakehurst altimeter setting.

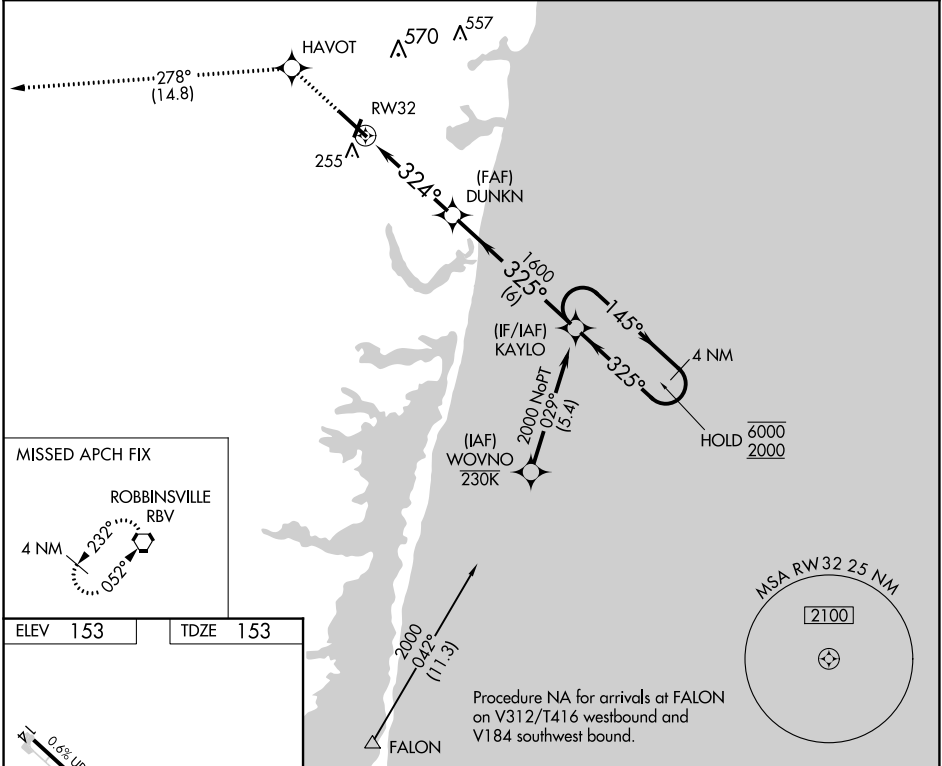
MISSED APPROACH:
 Climb to 2000 direct HAVOT, track 278° to RBV VORTAC and hold.

AWOS-3PT
121.625

MC GUIRE APP CON
126.475 363.8

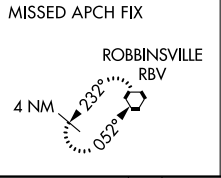
CLNC DEL
126.15

UNICOM
123.0 (CTAF)

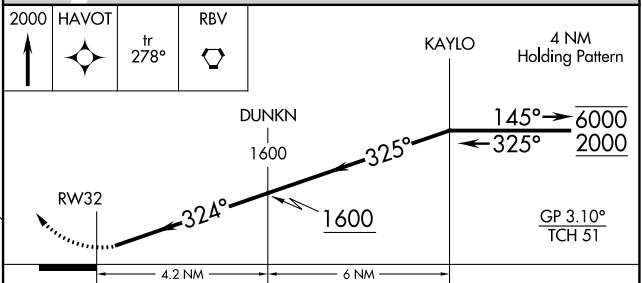
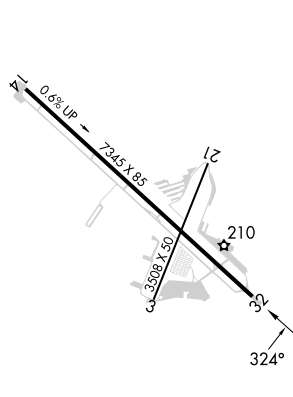


NE-2, 28 NOV 2024 to 26 DEC 2024

NE-2, 28 NOV 2024 to 26 DEC 2024



| | |
|----------|----------|
| ELEV 153 | TDZE 153 |
|----------|----------|



| | | | | |
|--------------|---|-------|-------------|---|
| CATEGORY | A | B | C | D |
| LPV DA | | 403-1 | 250 (300-1) | |
| LNAV/VNAV DA | | 403-1 | 250 (300-1) | |