

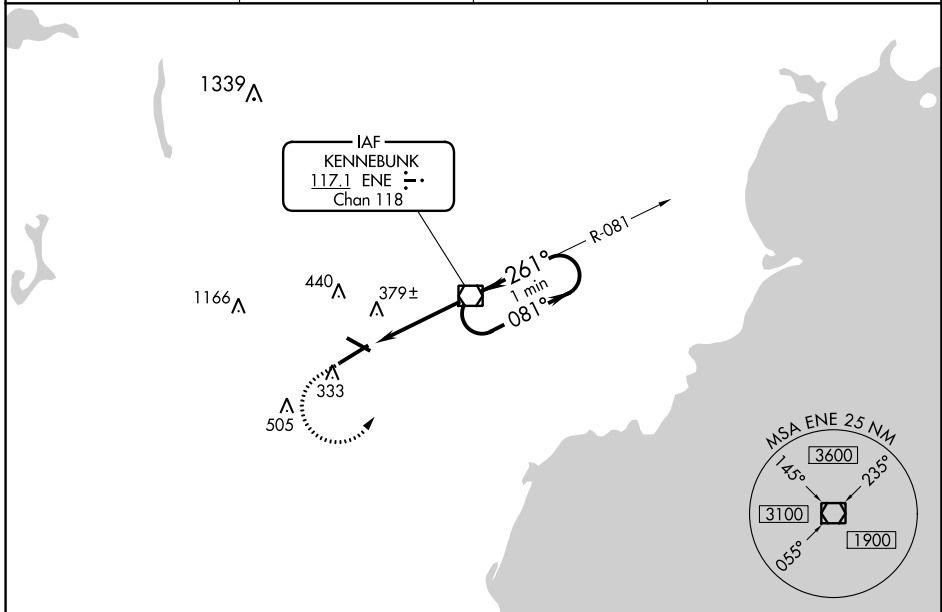
VORTAC ENE <b>117.1</b> Chan <b>118</b>	APP CRS <b>261°</b>	Rwy Idg TDZE Apt Elev	<b>6001</b> <b>235</b> <b>244</b>
---	------------------------	-----------------------------	---

# VOR RWY 25

SANFORD SEACOAST RGNL (SFM)

<p>⚠ Inoperative table does not apply to S-25 Cats A/B. For inoperative ODALS, increase S-25 Cats C/D visibility to 1<math>\frac{1}{8}</math>. When local altimeter setting not received, use Rochester, NH altimeter setting increase all MDA 40 feet, S-25 Cats C/D visibility <math>\frac{1}{8}</math> SM, and Circling Cat C visibility <math>\frac{1}{4}</math> SM; for inop ODALS, increase S-25 Cats C/D visibility to 1<math>\frac{1}{8}</math>. Rwy 25 helicopter visibility reduction below <math>\frac{3}{4}</math> SM NA.</p>	<p>ODALS ⚠ ...</p>	<p>MISSED APPROACH: Climb to 800 then climbing left turn to 2000 direct ENE VOR/DME and hold.</p>
---	------------------------	---

AWOS-3PT <b>120.025</b>	PORTLAND APP CON * <b>119.75 269.35</b>	CLNC DEL <b>121.725</b>	UNICOM <b>123.075</b> (CTAF) <b>0</b>
----------------------------	--	----------------------------	--



NE-1, 28 NOV 2024 to 26 DEC 2024

NE-1, 28 NOV 2024 to 26 DEC 2024

ELEV	244	TDZE	235
800	2000	ENE	One Minute Holding Pattern
		ENE VOR/DME	
CATEGORY	A	B	C
S-25	640-1 405 (400-1)		
CIRCLING	760-1 516 (600-1)	1180-2 $\frac{3}{4}$ 936 (1000-2 $\frac{3}{4}$ )	1240-3 996 (1000-3)

