

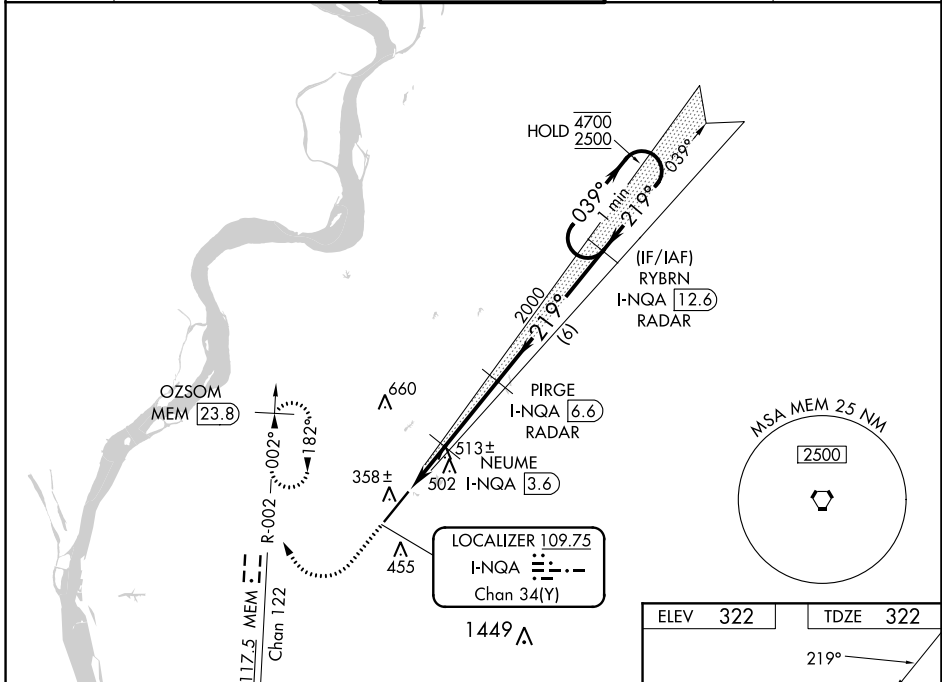
LOC/DME I-NQA 109.75 Chan 34 (Y)	APP CRS 219°	Rwy Idg TDZE 322 Apt Elev 322	8001
---	------------------------	---	-------------

ILS or LOC RWY 22

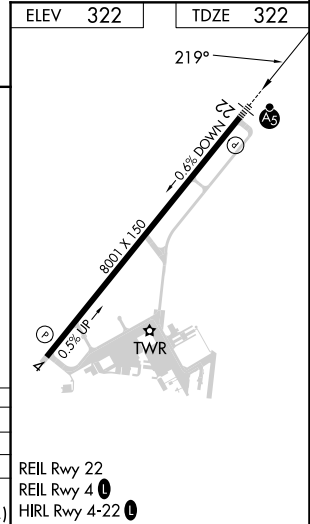
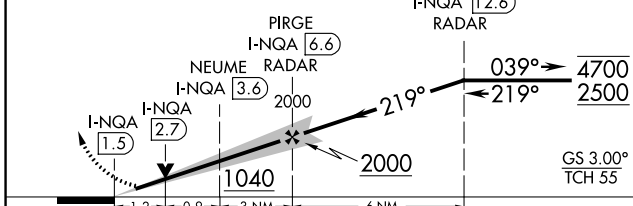
MILLINGTON/MEMPHIS (NQA)

RADAR required for procedure entry. DME required.		MALSR 	MISSED APPROACH: Climb to 1000 then climbing right turn to 3000 and on MEM VORTAC R-002 to OZSOM/MEM 23.8 DME and hold, continue climb-in-hold to 3000.
	S-ILS 22 procedure NA when control tower closed if ceiling/visibility lower than 800/2. For inop ALS, increase S-ILS 22 Cat E visibility to 3/4 SM and S-LOC 22 Cat E visibility to 1 1/2 SM.		

AWOS-3 118.925	MEMPHIS APP CON 119.1 291.6 (176°-355°) 125.8 338.3 (356°-175°)	MILLINGTON TOWER ★ 120.25 (CTAF) 340.2	GND CON 121.375	UNICOM 122.95
--------------------------	---	---	---------------------------	-------------------------



1000	3000	OZSOM MEM 23.8	VGSI and ILS glidepath not coincident (VGSI Angle 3.00/TCH 67). One Minute Holding Pattern
		MEM R-002	



CATEGORY	A	B	C	D	E
S-ILS 22	522-1/2 200 (200-1/2)				
S-LOC 22	780-1/2	458 (500-1/2)	780-7/8	458 (500-7/8)	
CIRCLING	800-1 478 (500-1)	820-1 498 (500-1)	920-1 1/2 598 (600-1 1/2)	960-2 638 (700-2)	960-2 1/4 638 (700-2 1/4)

REIL Rwy 22
REIL Rwy 4
HIRL Rwy 4-22

SE-1, 28 NOV 2024 to 26 DEC 2024

SE-1, 28 NOV 2024 to 26 DEC 2024