

RIDGECREST, CALIFORNIA

# HI-TACAN RWY 32

TACAN NID Chan 53	APCH CRS 313°	Rwy ldg TDZE Arprt Elev	<b>9013</b> <b>2241</b> <b>2288</b>
----------------------	------------------	-------------------------------	---

- (USN) CHINA LAKE NAWS (ARMITAGE FLD) (KNID)

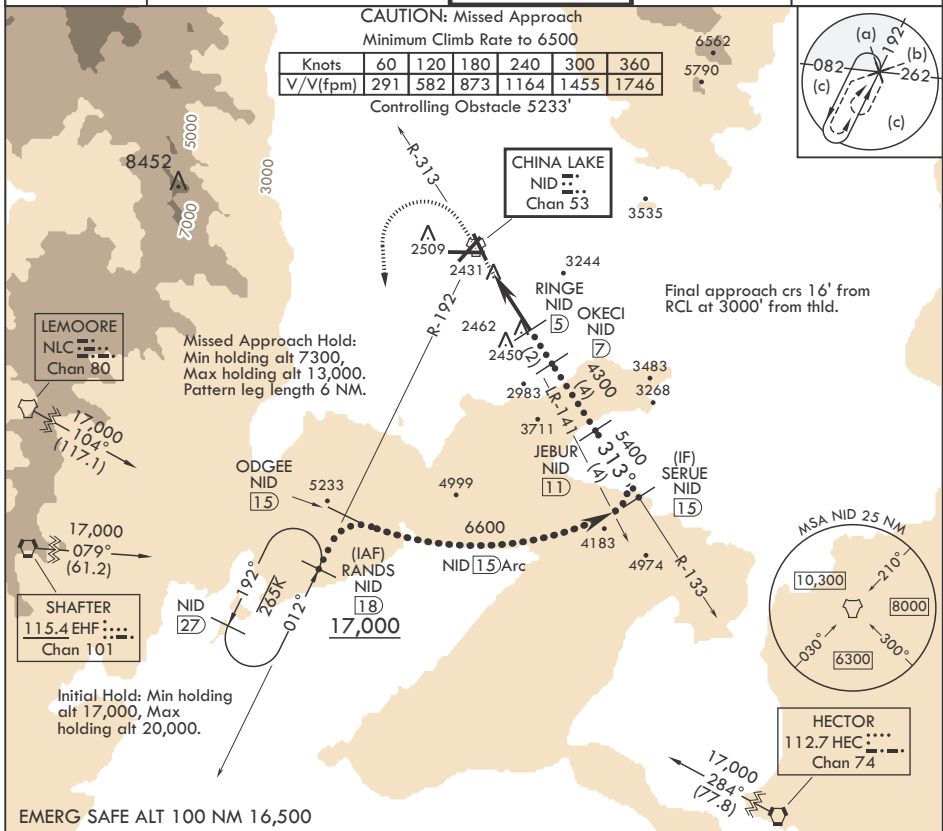
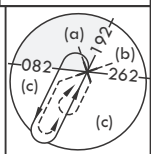
**MISSED APPROACH:** Climb to 3600 then a climbing left turn to 7300 to intercept China Lake TACAN R-192 to RANDS and hold.

ATIS★ <b>322.375</b>	JOSHUA APP CON/DEP CON <b>133.65 348.7</b>	TOWER★ <b>120.15 340.2</b>	GND CON <b>350.3</b>	CLNC DEL <b>254.25</b>
-------------------------	---	-------------------------------	-------------------------	---------------------------

CAUTION: Missed Approach  
Minimum Climb Rate to 6500

Knots	60	120	180	240	300	360
V/V(fpm)	291	582	873	1164	1455	1746

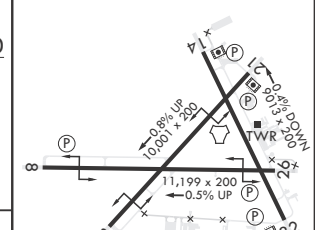
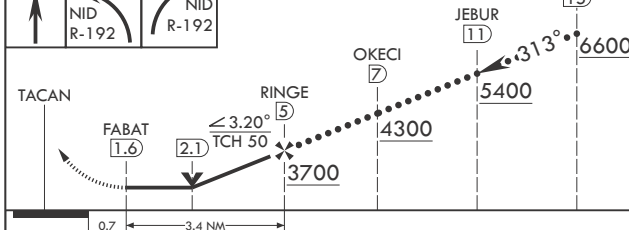
Controlling Obstacle 5233'



SW-3, 28 NOV 2024 to 26 DEC 2024

SW-3, 28 NOV 2024 to 26 DEC 2024

3600	7300	NID R-192	NID R-192	ELEV 2288	TDZE 2241
------	------	-----------	-----------	-----------	-----------



CATEGORY	C	D	E
S-32	2720-1 $\frac{3}{8}$	479	(500-1 $\frac{3}{8}$ )
CIRCLING	2820-1 $\frac{1}{2}$ 536 (600-1 $\frac{1}{2}$ )	3500-3 1216 (1300-3)	NA

HIRL all Rwys

RIDGECREST, CALIFORNIA 35°41'N - 117°42'W CHINA LAKE NAWS (ARMITAGE FLD) (KNID)

Amdt 5 10SEP20

# HI-TACAN RWY 32