

HI-TACAN Z RWY 03

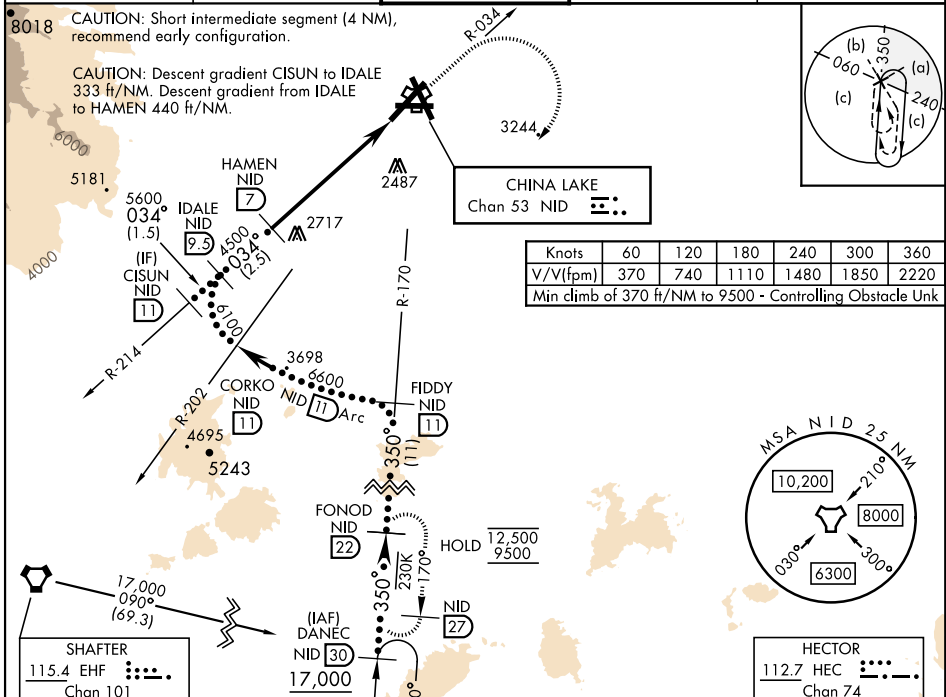
TACAN NID Chan 53	APCH CRS 034°	Rwy Idg 10,001
		TDZE 2284
		Arprt Elev 2288

[USN]

CHINA LAKE NAWA (ARMITAGE FLD) (KNID)

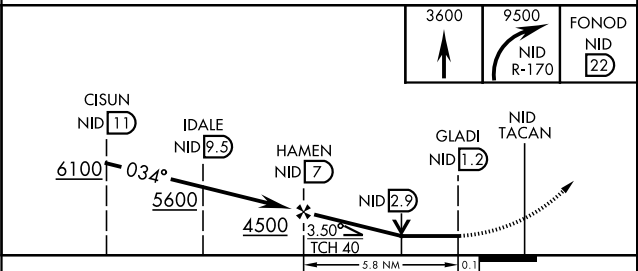
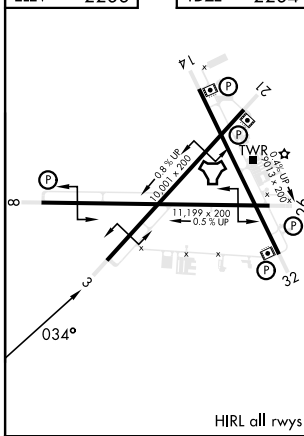
MISSED APPROACH: Climb to 3600 then climbing right turn to 9500, intercept NID TACAN R-170 to FONOD and hold. Minimum climb gradient 370 ft/NM to 9500.

ATIS ★ 322.375	JOSHUA APP/DEF CON 133.65 348.7	TOWER ★ 120.15 340.2	GND CON 350.3	CLNC DEL 254.25
-------------------	------------------------------------	-------------------------	------------------	--------------------



EMERG SAFE ALT 100 NM 16,500

ELEV 2288	TDZE 2284
-----------	-----------



CATEGORY	C	D	E
S-03	2980-2	696	(700-2)
C CIRCLING	2980-2 696 (700-2)	3560-3 1276 (1300-3)	NOT AUTHORIZED

HI-TACAN Z RWY 03

SW-3, 28 NOV 2024 to 26 DEC 2024

SW-3, 28 NOV 2024 to 26 DEC 2024