

RIDGECREST, CALIFORNIA

RNAV (GPS) RWY 03

APCH CRS 028°	Rwy Idg 10,001
	TDZE 2284
	Arprt Elev 2288

- (USN)

CHINA LAKE NAWS (ARMITAGE FLD) (KNID)

RNP APCH
RADAR required

MISSED APPROACH: (Do not exceed 185 KIAS until initial turn completion.) Climb to 3600 then climbing right turn to 7600 direct JEBUR, track 216° to PEXOE, track 275° to MIGPE and hold. Missed Approach requires a minimum climb of 350 ft per NM to 7600.

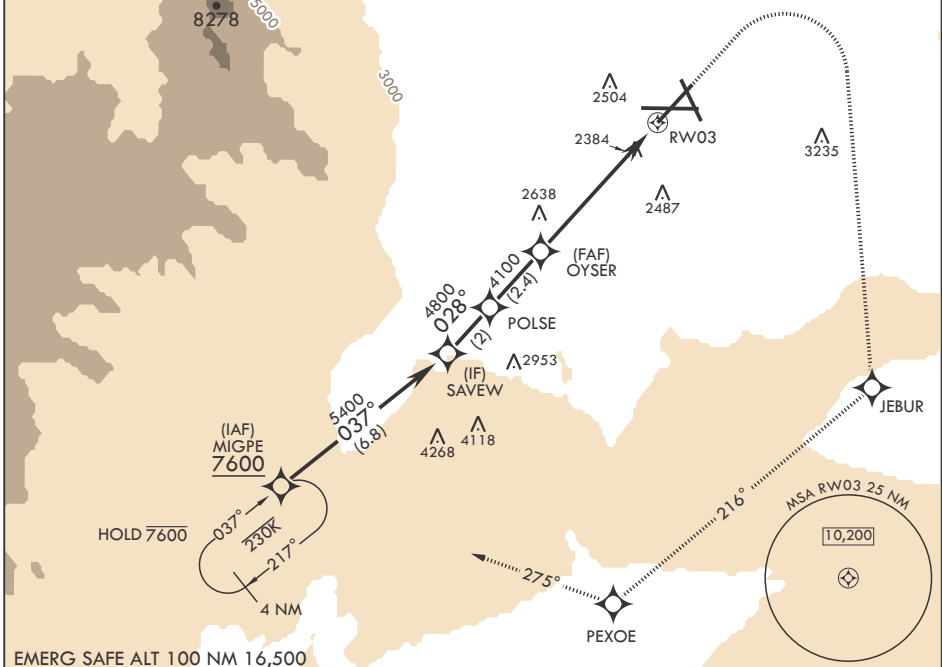
ATIS★ 322.375	JOSHUA APP CON/DEP CON 133.65 348.7	TOWER★ 120.15 340.2	GND CON 350.3	CLNC DEL 254.25
-------------------------	---	-------------------------------	-------------------------	---------------------------

NOT FOR CIVIL USE

CAUTION: Missed Approach
Minimum Climb Rate to 7600

Knots	60	120	180	240	300	360
V/V(ftpm)	350	700	1050	1400	1750	2100

Controlling Obstacle Unknown

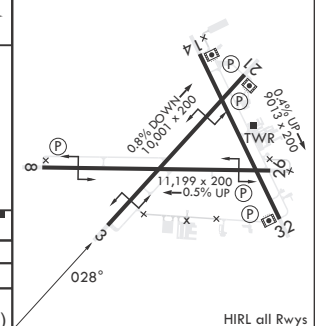
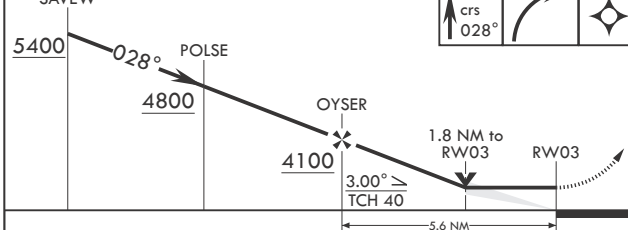


SW-3, 28 NOV 2024 to 26 DEC 2024

SW-3, 28 NOV 2024 to 26 DEC 2024

EMERG SAFE ALT 100 NM 16,500

SAVEW 5400 POLSE 4800 OYSER 4100 RWY 03 ELEV 2288 TDZE 2284



CATEGORY	A	B	C	D
LNAV MDA	2900-1 616 (700-1)	2900-1¼ 616 (700-1¼)	2900-1¾ 616 (700-1¾)	3560-3 (1300-3)
☐ CIRCLING	2900-1 616 (700-1)	2900-1¾ 616 (700-1¾)	3560-3 (1300-3)	

RIDGECREST, CALIFORNIA
Orig 12AUG21

35°41'N - 117°42'W

CHINA LAKE NAWS (ARMITAGE FLD) (KNID)

RNAV (GPS) RWY 03