

RIDGECREST, CALIFORNIA

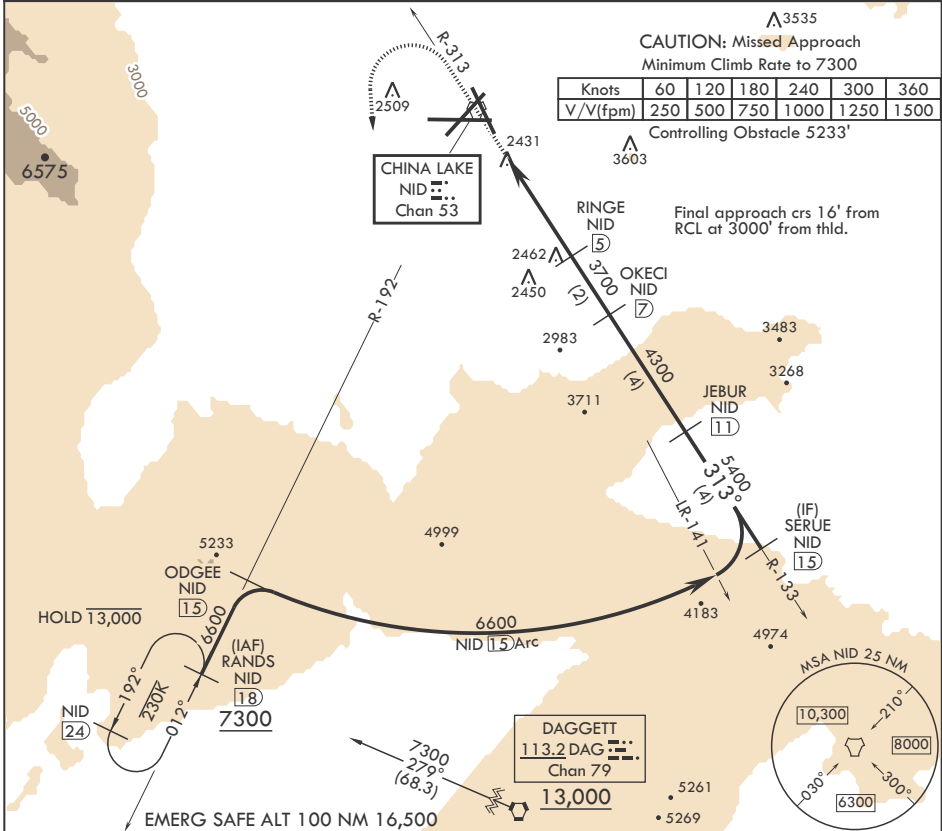
# TACAN RWY 32

TACAN NID Chan 53	APCH CRS 313°	Rwy ldg TDZE Arprt Elev 2288	9013 2241 2288
----------------------	------------------	---------------------------------------	----------------------

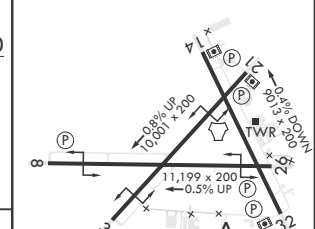
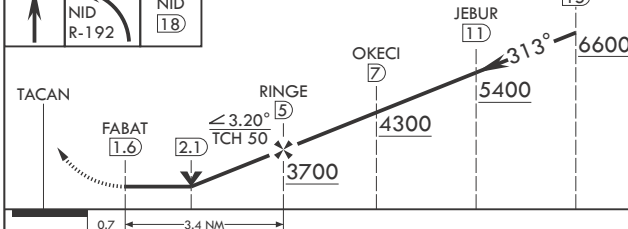
- (USN) CHINA LAKE NAWS (ARMITAGE FLD) (KNID)

**MISSED APPROACH:** Climb to 3600 then a climbing left turn to 7300 to intercept China Lake TACAN R-192 to RANDS and hold.

ATIS★ 322.375	JOSHUA APP CON/DEP CON 133.65 348.7	TOWER★ 120.15 340.2	GND CON 350.3	CLNC DEL 254.25
------------------	--	------------------------	------------------	--------------------



3600	7300	RANDS NID (18)	SERUE (15)	ELEV 2288	TDZE 2241
------	------	----------------	------------	-----------	-----------



CATEGORY	A	B	C	D
S-32	2720-1 2740-1 456 (500-1)	479 2820-1 536 (600-1)	2720-1 1/8 2820-1 1/2 536 (600-1 1/2)	479 (500-1 1/2) 3500-3 1216 (1300-3)
CIRCLING				

HIRL all Rwys

RIDGECREST, CALIFORNIA 35°41'N - 117°42'W CHINA LAKE NAWS (ARMITAGE FLD) (KNID)

Amdt 5 10SEP20

# TACAN RWY 32

SW-3, 28 NOV 2024 to 26 DEC 2024

SW-3, 28 NOV 2024 to 26 DEC 2024