

HI-TACAN Y RWY 23

TACAN NBC Chan 42	APCH CRS 221°	Rwy ldg 12,202 TDZE Arprt Elev 16 37
-----------------------------	-------------------------	--

[USN]

BEAUFORT MCAS (MERRITT FLD) (KNBC)

* When ALS inop, increase vis to 1 mile.

 ALSF-1

 MISSED APPROACH: Climb to 500, then climbing right turn to 3000, intercept NBC TACAN R-307 direct BRAYS and hold.

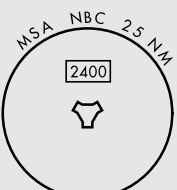
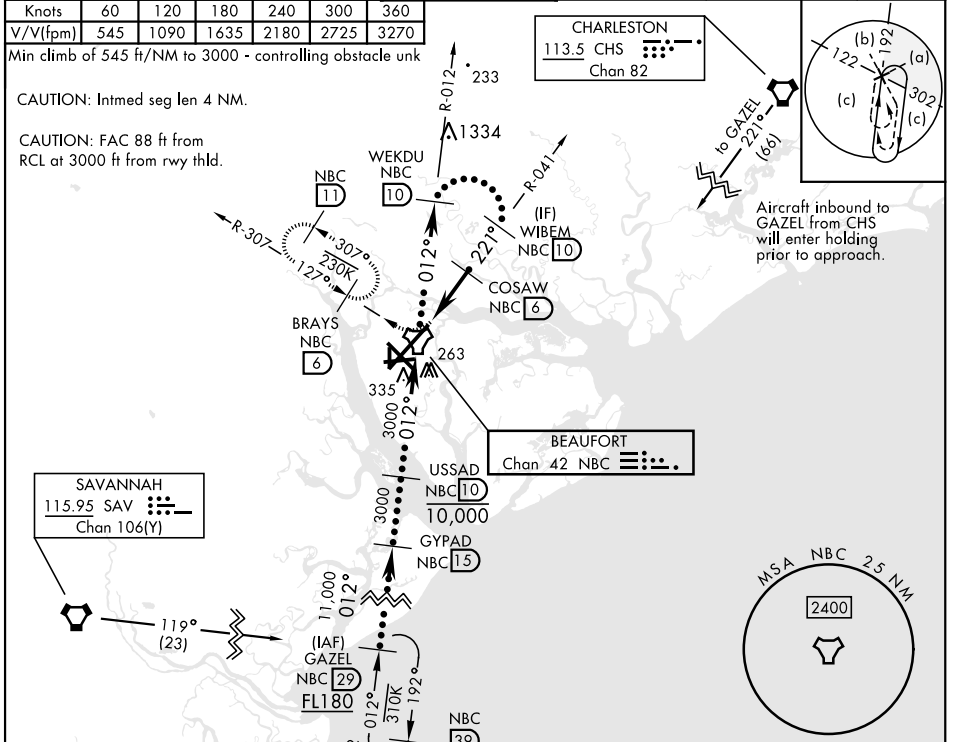
ATIS ★ 279.525	APP CON (ABV 3000) 125.125 292.125 (3000 and BLW) 123.7 269.125	TOWER ★ 119.05 342.875	GND CON 128.15 348.625	CLNC DEL 128.15 254.375	ASR/PAR
--------------------------	---	---	---	--	---------

Knots	60	120	180	240	300	360
V/V(fpm)	545	1090	1635	2180	2725	3270

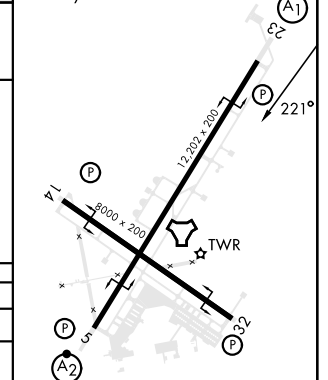
Min climb of 545 ft/NM to 3000 - controlling obstacle unk

CAUTION: Intmed seg len 4 NM.

CAUTION: FAC 88 ft from RCL at 3000 ft from rwy thld.



ELEV	37	TDZE	16
------	----	------	----



EMERG SAFE ALT 100 NM 3100

CATEGORY	C	D	E
	380- $\frac{3}{4}$	364	(400- $\frac{3}{4}$)
S-23 *			
CIRCLING	580-1 $\frac{1}{2}$ 543 (600-1 $\frac{1}{2}$)	600-2 563 (600-2)	740-2 $\frac{1}{2}$ 703 (800-2 $\frac{1}{2}$)

HI-TACAN Y RWY 23

SE-2, 28 NOV 2024 to 26 DEC 2024

SE-2, 28 NOV 2024 to 26 DEC 2024