

HI-TACAN Z RWY 23

TACAN Chan 42	NBC 221°	APCH CRS 221°	Rwy ldg 12,202 TDZE 16 Arpt Elev 37
-------------------------	--------------------	-------------------------	--

[USN]

BEAUFORT MCAS (MERRITT FLD) (KNBC)

MISSED APPROACH: Climb to 500, then climbing right turn to 3000, intercept NBC TACAN R-307 direct BRAYS and hold.

* When ALS inop, increase vis to 1 mile.

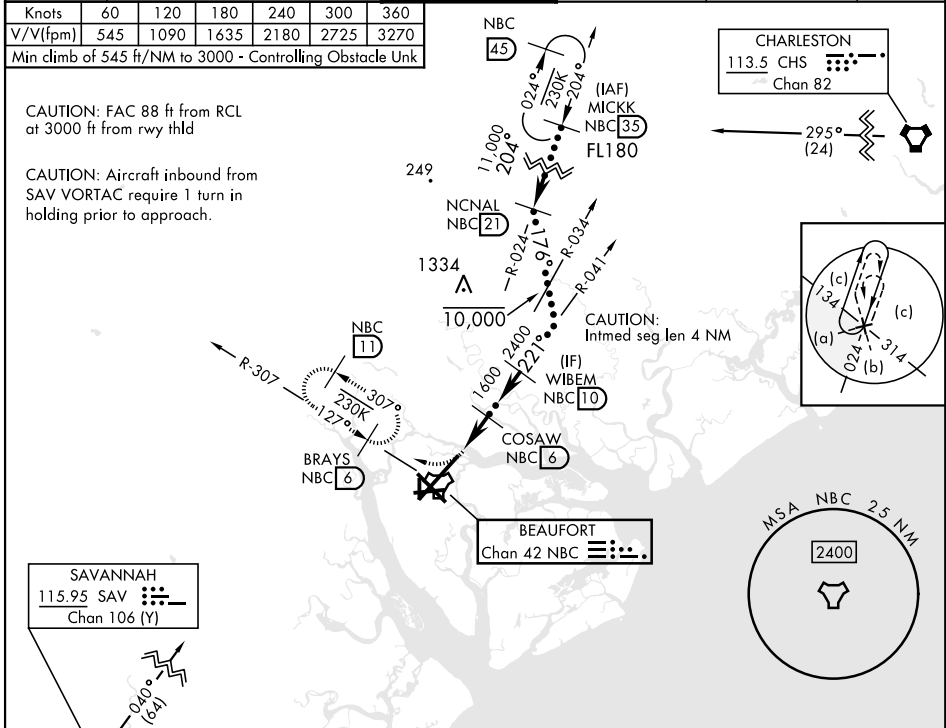
ATIS * 279.525	APP CON (ABV 3000) 125.125 292.125 (3000 and BLW) 123.7 269.125	TOWER * 119.05 342.875	GND CON 128.15 348.625	CLNC DEL 128.15 254.375	ASR/PAR
---------------------------------	--	--	--	---	----------------

Knots	60	120	180	240	300	360
V/V(fpm)	545	1090	1635	2180	2725	3270

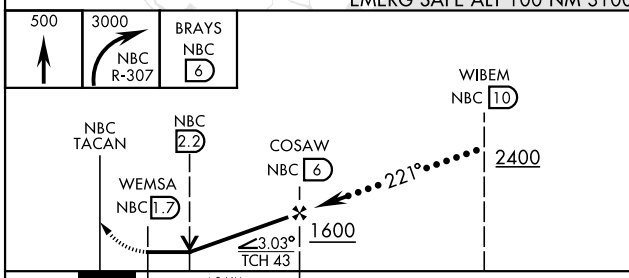
Min climb of 545 ft/NM to 3000 - Controlling Obstacle Unk

CAUTION: FAC 88 ft from RCL at 3000 ft from rwy thld

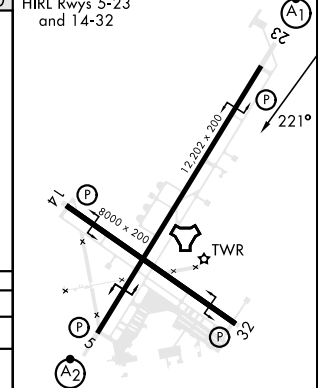
CAUTION: Aircraft inbound from SAV VORTAC require 1 turn in holding prior to approach.



EMERG SAFE ALT 100 NM 3100



ELEV 37	TDZE 16
----------------	----------------



CATEGORY S-23 *	C 380- $\frac{3}{4}$	D 364	E (400- $\frac{3}{4}$)
CIRCLING	580-1 $\frac{1}{2}$ 543 (600-1 $\frac{1}{2}$)	600-2 563 (600-2)	740-2 $\frac{1}{2}$ 703 (800-2 $\frac{1}{2}$)

HI-TACAN Z RWY 23

SE-2, 28 NOV 2024 to 26 DEC 2024

SE-2, 28 NOV 2024 to 26 DEC 2024