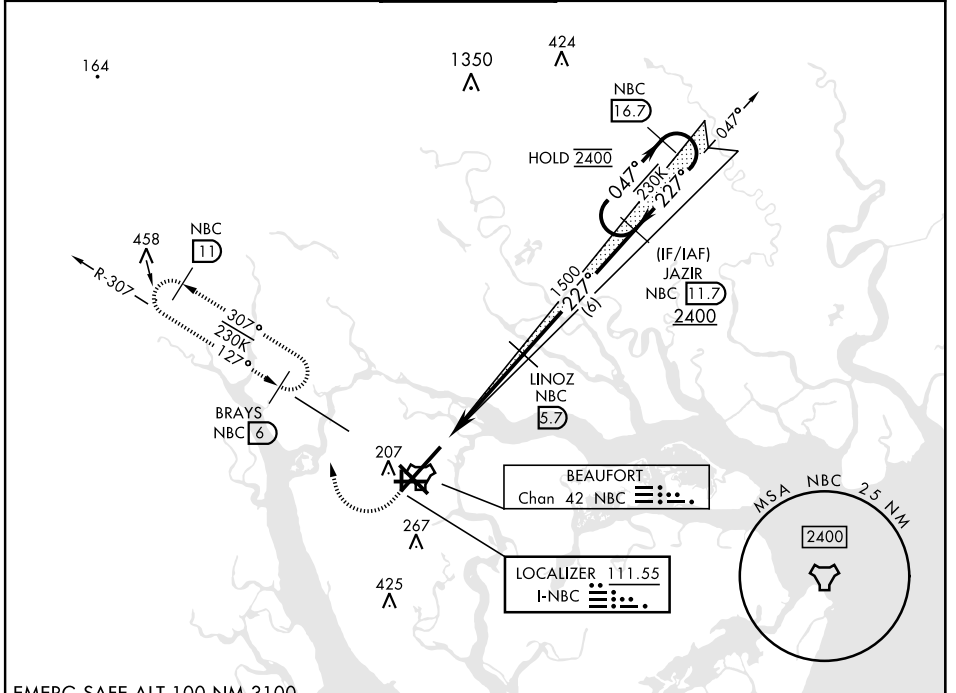
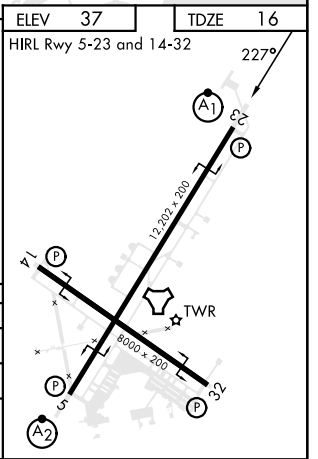
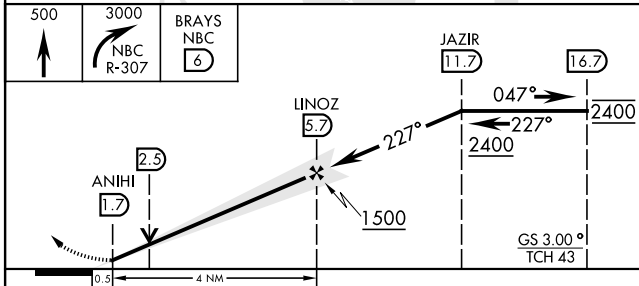


ILS or LOC Y RWY 23

LOC I-NBC 111.55	APCH CRS 227°	Rwy ldg 12,202 TDZE 16 Arprt Elev 37	[USN]	BEAUFORT MCAS (MERRITT FLD) (KNBC)		
RNAV or RADAR required for missed approach.				ALSIF-1 	MISSED APPROACH: Climb to 500, then climbing right turn to 3000, join NBC TACAN R-307 direct BRAYS and hold. Continue climb in hold to 3000.	
*When ALS inop, increase vis to 3/4 mile. **When ALS inop, increase CAT AB vis to 1 mile; CAT CDE vis to 1 1/2 miles.						
ATIS ★ 279.525	APP CON 125.125 292.125 (ABV 3000) 123.7 269.125 (3000 and BLW)		TOWER ★ 119.05 342.875	GND CON 128.15 348.625	CLNC DEL 128.15 254.375	ASR/PAR



EMERG SAFE ALT 100 NM 3100



CATEGORY	A	B	C	D	E
S-ILS 23*	216-1/2		200	(200-1/2)	
S-LOC 23**	460-1/2	444 (500-1/2)	460-7/8	444	(500-7/8)
C CIRCLING	560-1	523 (600-1)	580-1 1/2 543 (600-1 1/2)	600-2 563 (600-2)	740-2 1/2 703 (800-2 1/2)

ILS or LOC Y RWY 23

SE-2, 28 NOV 2024 to 26 DEC 2024

SE-2, 28 NOV 2024 to 26 DEC 2024