


# RNAV (GPS) RWY 5

WAAS Chan <b>90095</b> <b>W05A</b>	APCH CRS <b>047°</b>	Rwy Idg <b>12,202</b> TDZE <b>37</b> Arpt Elev <b>37</b>
--	-------------------------	--

[USN]

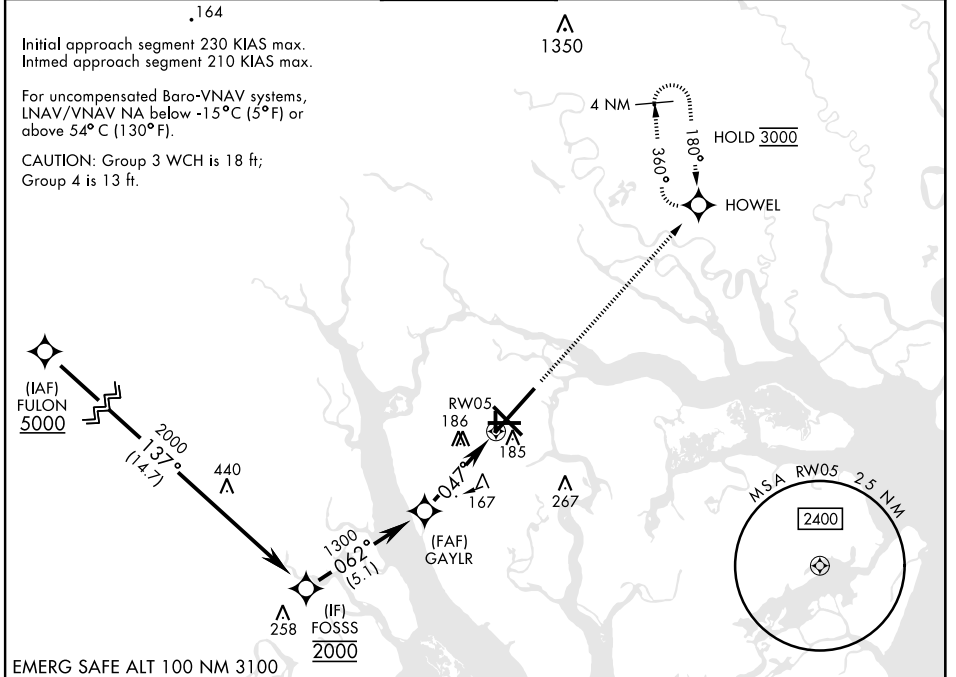
BEAUFORT MCAS (MERRITT FLD) (KNBC)

RNP APCH
RADAR required
<p>▼ * When ALS inop, increase vis to 1 mile.                  ** When ALS inop, increase CAT AB vis to 1 mile, CAT CD to 1/2 miles.</p>

SALSF 

MISSED APPROACH: Climb to 3000 direct HOWEL and hold, continue climb-in-hold to 3000.

ATIS ★ <b>279.525</b>	APP CON <b>125.125 292.125</b> (ABV 3000) <b>123.7 269.125</b> (3000 and BLW)	TOWER★ <b>119.05 342.875</b>	GND CON <b>128.15 348.625</b>	CLNC DEL <b>128.15 254.375</b>	ASR/ PAR
--------------------------	---	---------------------------------	----------------------------------	-----------------------------------	-------------



SE-2, 28 NOV 2024 to 26 DEC 2024

SE-2, 28 NOV 2024 to 26 DEC 2024

<p>FULON 5000</p> <p>FOSSS 2000</p> <p>GAYLR 1300</p> <p>RW05 3000</p> <p>HOWEL 3000</p> <p>GP 3.00° TCH 38</p>		<p>HOWEL ELEV 37 TDZE 37</p> <p>HRL Rwy 5-23 and 14-32</p>		
<p>1.37°</p> <p>062°</p> <p>047°</p> <p>1.1 NM to RW05</p> <p>3.9 NM</p>		<p>A1</p> <p>A2</p> <p>13,200 x 200</p> <p>6000 x 200</p> <p>047°</p>		
CATEGORY	A	B	C	D
LPV DA	237-3/4		200	(200-3/4)
LNAV/ * VNAV DA	409-3/4		372	(400-3/4)
LNAV MDA	420-3/4	383 (400-3/4)	420-7/8	383 (400-7/8)
CIRCLING	560-1	523 (600-1)	580-1 1/2 543 (600-1 1/2)	600-2 563 (600-2)

# RNAV (GPS) RWY 5