

# TACAN RWY 14

TACAN NBC Chan <b>42</b>	APCH CRS <b>127°</b>	Rwy ldg TDZE Arprt Elev	<b>8000</b> <b>32</b> <b>37</b>
-----------------------------	-------------------------	-------------------------------	---------------------------------------

[USN]

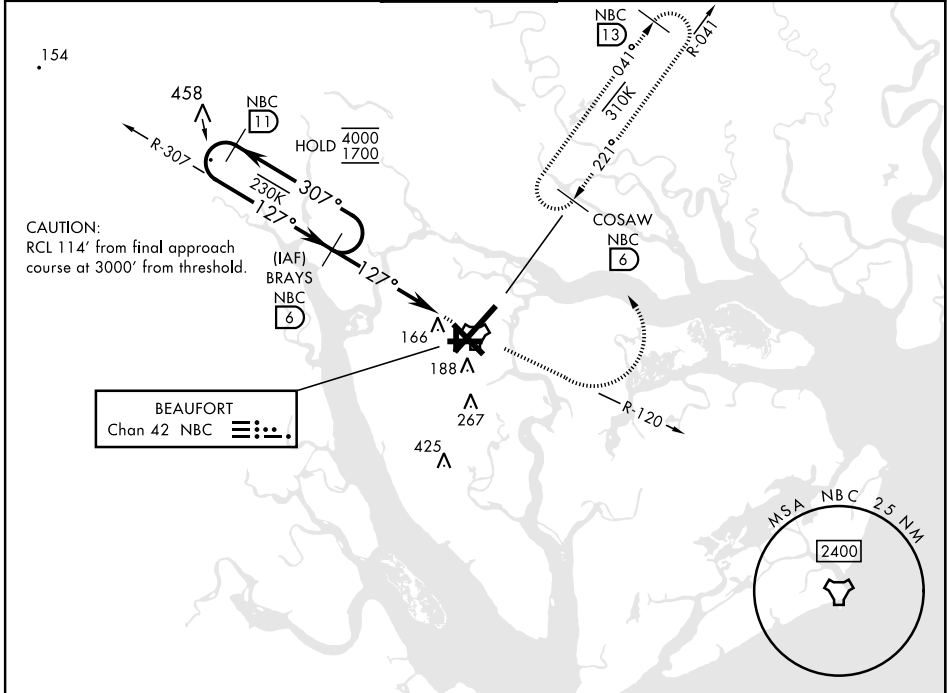
BEAUFORT MCAS (MERRITT FLD) (KNBC)

RADAR required

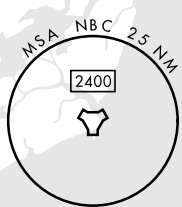
▼

MISSED APPROACH: Climb to 1600 on NBC TACAN R-120, then climbing left turn to 3000 via hdg 330° to intercept NBC R-041 to 6 DME (COSAW) and hold. Continue climb in hold to 3000.

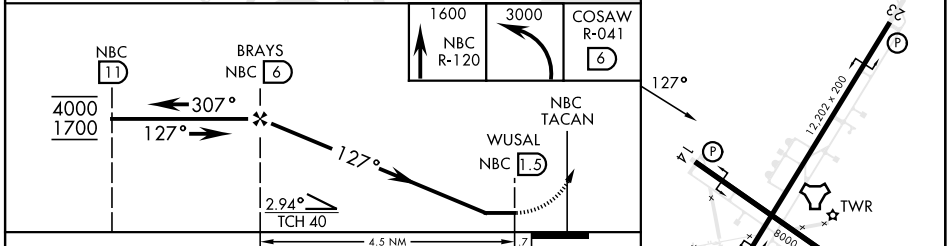
ATIS★ <b>279.525</b>	APP CON <b>125.125 292.125</b> (ABV 3000) <b>123.7 269.125</b> (3000 and BLW)	TOWER★ <b>119.05 342.875</b>	GND CON <b>128.15 348.625</b>	CLNC DEL <b>128.15 254.375</b>	ASR/PAR
-------------------------	---	---------------------------------	----------------------------------	-----------------------------------	---------



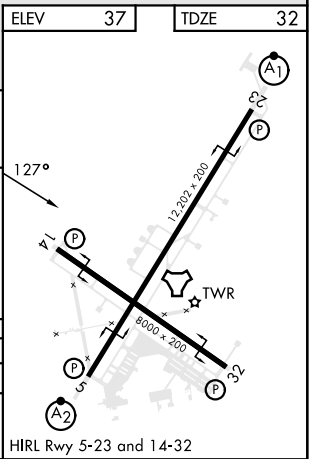
BEAUFORT  
Chan 42 NBC



ELEV	37	TDZE	32
------	----	------	----



CATEGORY	A	B	C	D	E
S-14	420-1 388 (400-1)		420-1 1/8 388 (400-1 1/8)		
CIRCLING	560-1 523 (600-1)		580-1 1/2 543 (600-1 1/2)	600-2 563 (600-2)	740-2 1/2 703 (800-2 1/2)



BEAUFORT, SOUTH CAROLINA 32°29'N-80°43'W BEAUFORT MCAS (MERRITT FLD) (KNBC)

Amdt 3 11JUL24

# TACAN RWY 14

SE-2, 28 NOV 2024 to 26 DEC 2024

SE-2, 28 NOV 2024 to 26 DEC 2024