

TACAN RWY 23

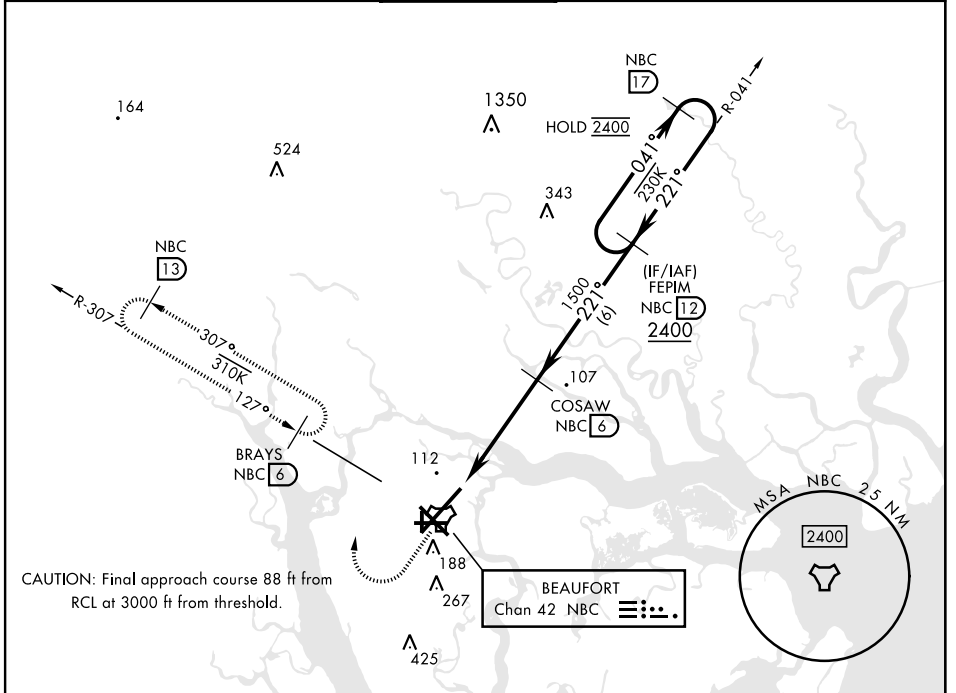
TACAN NBC Chan 42	APCH CRS 221°	Rwy Idg 12,202 TDZE 16 Arprt Elev 37
-----------------------------	-------------------------	---

[USN]

BEAUFORT MCAS (MERRITT FLD) (KNBC)

RADAR required		ALSIF-1 	MISSED APPROACH: Climb to 500, then climbing right turn to 3000, join NBC TACAN R-307 direct BRAYS and hold. Continue climb in hold to 3000.
*When ALS inop, increase vis to 1 mile.			

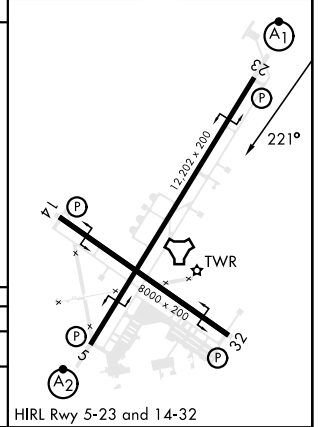
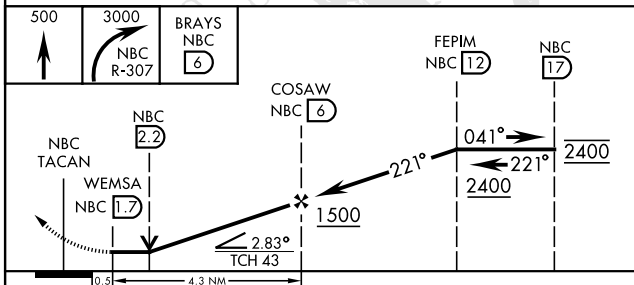
ATIS ★ 279.525	APP CON 125.125 292.125 (ABV 3000) 123.7 269.125 (3000 and BLW)	TOWER ★ 119.05 342.875	GND CON 128.15 348.625	CLNC DEL 128.15 254.375	ASR/PAR
--------------------------	---	----------------------------------	----------------------------------	-----------------------------------	---------



CAUTION: Final approach course 88 ft from RCL at 3000 ft from threshold.

EMERG SAFE ALT 100 NM 3100

ELEV	37	TDZE	16
------	----	------	----



CATEGORY	A		B		C	D	E
S-23 *	380-1/2	364	(400-1/2)		380-3/4	364	(400-3/4)
C CIRCLING	560-1	523	(600-1)		580-1 1/2 543 (600-1 1/2)	600-2 563 (600-2)	740-2 1/2 703 (800-2 1/2)

TACAN RWY 23

SE-2, 28 NOV 2024 to 26 DEC 2024

SE-2, 28 NOV 2024 to 26 DEC 2024