

TACAN RWY 32

TACAN Chan 42	NBC 331°	APCH CRS 331°	Rwy Idg TDZE Arprt Elev 8000 25 37
-------------------------	--------------------	-------------------------	--

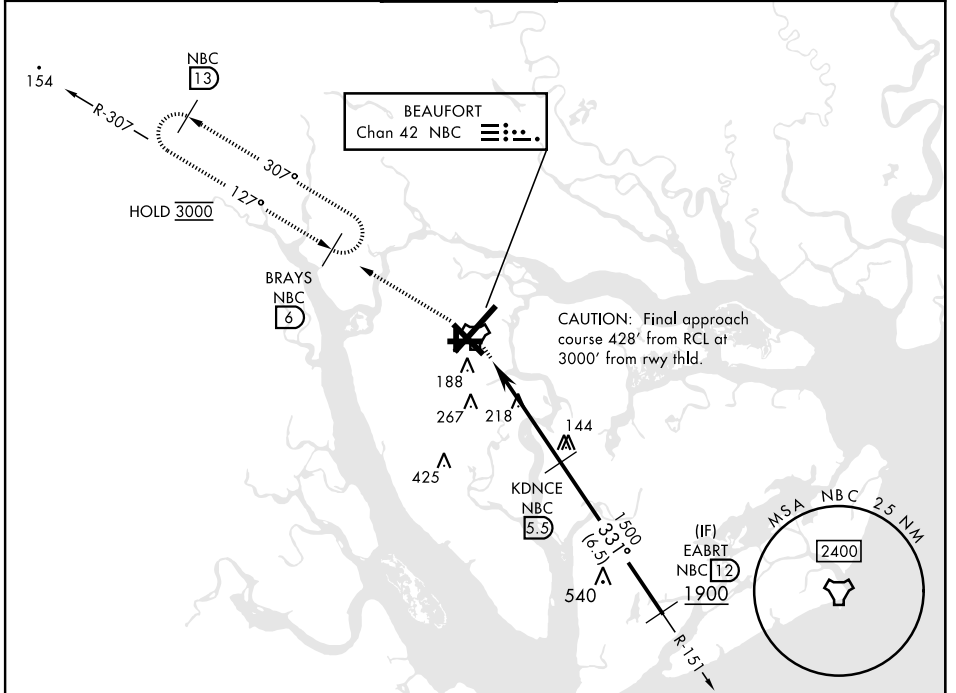
[USN]

BEAUFORT MCAS (MERRITT FLD) (KNBC)

▽

MISSED APPROACH: Climb to 3000 on NBC TACAN R-307 to BRAYS and hold. Continue climb in hold to 3000.

ATIS ★ 279.525	APP CON 125.125 292.125 (ABV 3000) 123.7 269.125 (3000 and BLW)	TOWER ★ 119.05 342.875	GND CON 128.15 348.625	CLNC DEL 128.15 254.375	ASR/PAR
--------------------------	---	----------------------------------	----------------------------------	-----------------------------------	---------



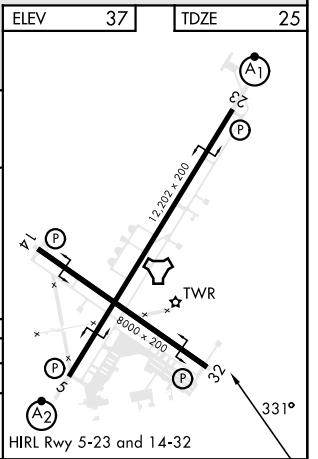
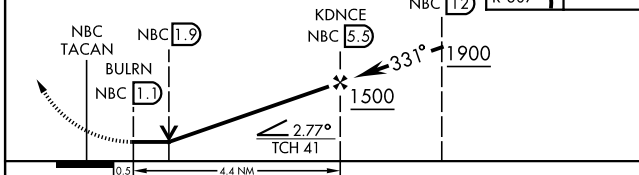
SE-2, 28 NOV 2024 to 26 DEC 2024

SE-2, 28 NOV 2024 to 26 DEC 2024

ELEV	37	TDZE	25
------	----	------	----

EMERG SAFE ALT 100 NM 3100

VGSI and descent angles not coincident (VGSI Angle 3.00/TCH 41).



CATEGORY	A	B	C	D	E
S-32	480-1 455 (500-1)		480-1 5/8	455 (500-1 1/2)	
C CIRCLING	560-1 523 (600-1)		580-1 1/2 543 (600-1 1/2)	600-2 563 (600-2)	740-2 1/2 703 (800-2 1/2)

TACAN RWY 32