

# TACAN RWY 35R

TACAN NQI Chan 125	APCH CRS 004°	Rwy Ldg TDZE 49 Arprt Elev 50
-----------------------	------------------	--

AL-918 [USN]

KINGSVILLE NAS (KNQI)

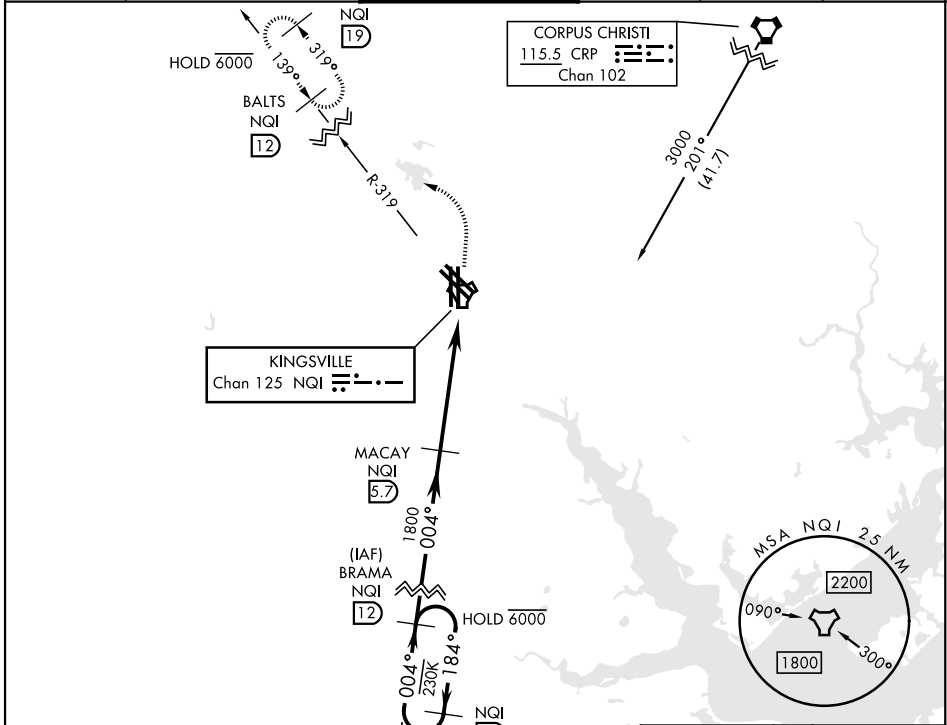
ALSF-1
 



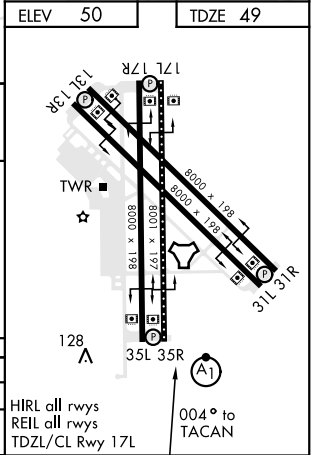
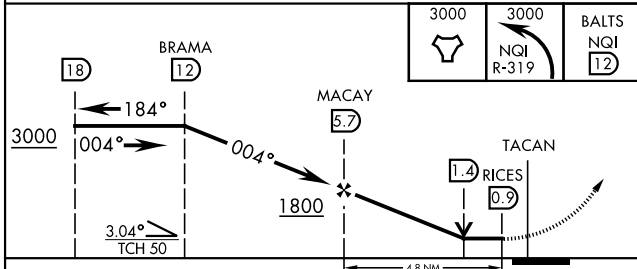
**MISSED APPROACH:** Climb to 3000 direct NQI TACAN and climbing left turn to intercept NQI R-319 to BALTS and hold. Continue climb-in-hold to 3000.

\* When ALS inop, increase vis to 1 mile.

ATIS ★ <b>282.25</b>	APP CON <b>119.9 290.45</b>	TOWER★ <b>124.1 377.05</b>	GND CON <b>239.05</b>	CLNC DEL <b>328.4</b>	ASR/PAR
-------------------------	--------------------------------	-------------------------------	--------------------------	--------------------------	---------



ELEV 50	TDZE 49
---------	---------



CATEGORY	A	B	C	D
S-35R *	420-½ 372 (400-½)		420-¾ 372 (400-¾)	
CIRCLING	540-1 490 (500-1)		760-2 710 (800-2)	760-2¼ 710 (800-2¼)

KINGSVILLE, TEXAS 27°30'N-97°49'W KINGSVILLE NAS (KNQI)

Amdt 1 05NOV20

# TACAN RWY 35R

SC-3, 28 NOV 2024 to 26 DEC 2024

SC-3, 28 NOV 2024 to 26 DEC 2024