

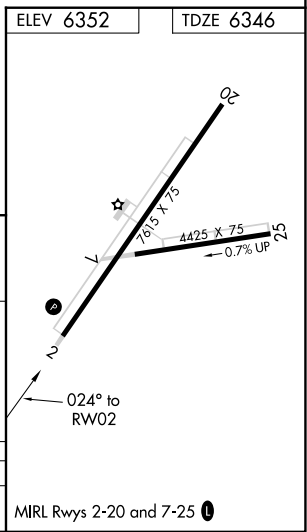
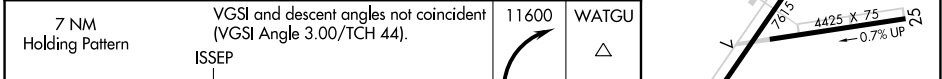
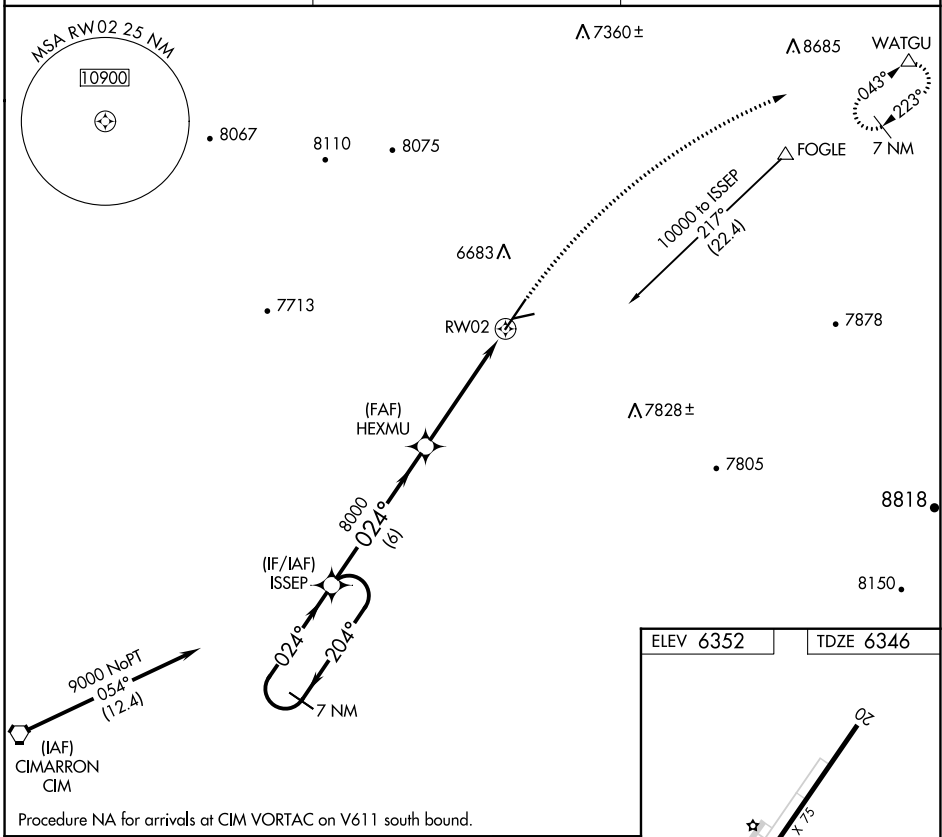
APP CRS	Rwy Idg	7615
024°	TDZE	6346
	Apt Elev	6352

RNAV (GPS) RWY 2

RATON MUNI/CREWS FLD (RTN)

RNP APCH-GPS.	MISSED APPROACH: Climbing right turn to 11600 direct WATGU and hold, continue climb-in-hold to 11600.
Procedure NA at night. Rwy 2 helicopter visibility reduction below 1 SM NA.	

ASOS 118.375	ALBUQUERQUE CENTER 132.8 346.35	UNICOM 122.8 (CTAF) 0
------------------------	---	---------------------------------



CATEGORY	A	B	C	D
LNAV MDA	7020-1	674 (700-1)	7020-2	674 (700-2)

MIRL Rwy's 2-20 and 7-25 0

SW-1, 28 NOV 2024 to 26 DEC 2024

SW-1, 28 NOV 2024 to 26 DEC 2024