

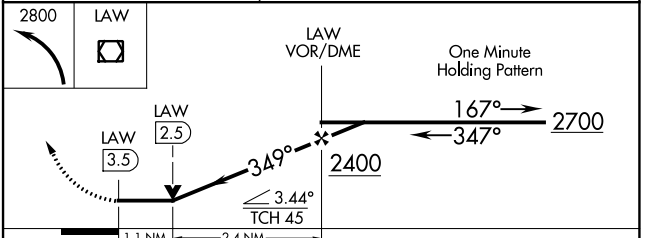
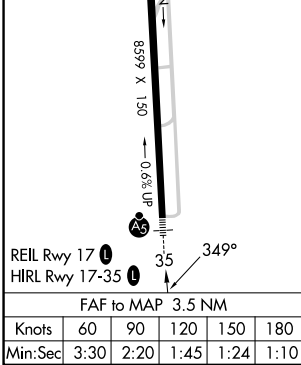
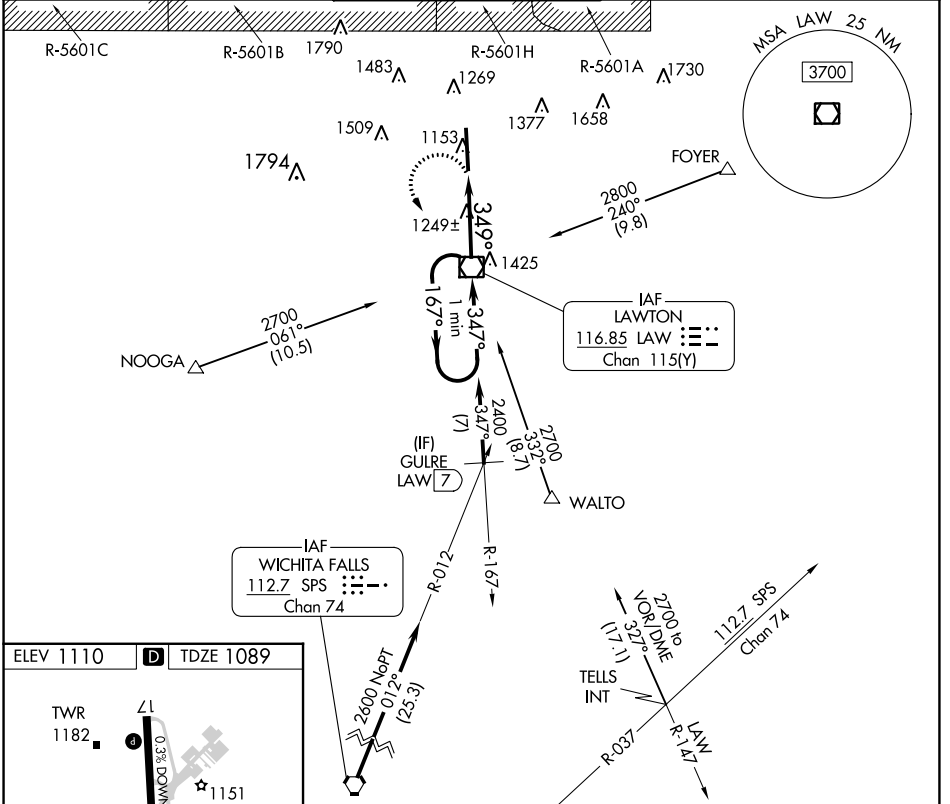
VOR/DME LAW 116.85 Chan 115(Y)	APP CRS 349°	Rwy Idg 8599 TDZE 1089 Apt Elev 1110
--	------------------------	--

VOR RWY 35

LAWTON-FORT SILL RGNL (LAW)

For inop ALS, increase Cat C/D visibility to 1½ SM. ASR	MALS	MISSED APPROACH: Climbing left turn to 2800 direct LAW VOR/DME and hold, continue climb-in-hold to 2800.
--	------	--

ATIS 120.75	FORT SILL APP CON 120.55 322.4	LAWTON TOWER ★ 119.9(CTAF) 257.8	GND CON 121.9	UNICOM 122.95
-----------------------	--	--	-------------------------	-------------------------



CATEGORY	A	B	C	D
S-35	1500-½	411 (500-½)	1500-¾	411 (500-¾)
CIRCLING	1620-1	510 (600-1)	1820-2 710 (800-2)	1820-2¼ 710 (800-2¼)

SC-1, 28 NOV 2024 to 26 DEC 2024

SC-1, 28 NOV 2024 to 26 DEC 2024