

OXNARD, CALIFORNIA

RNAV (GPS) RWY 21

APCH CRS	Rwy Idg	11,102
212°	TDZE	13
	Arpt Elev	13

-(USN)

POINT MUGU NAS (NAVAL BASE VENTURA CO) (KNTD)

RNP APCH



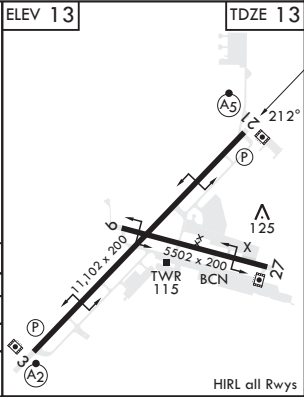
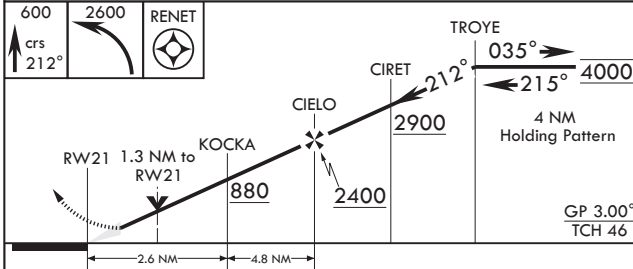
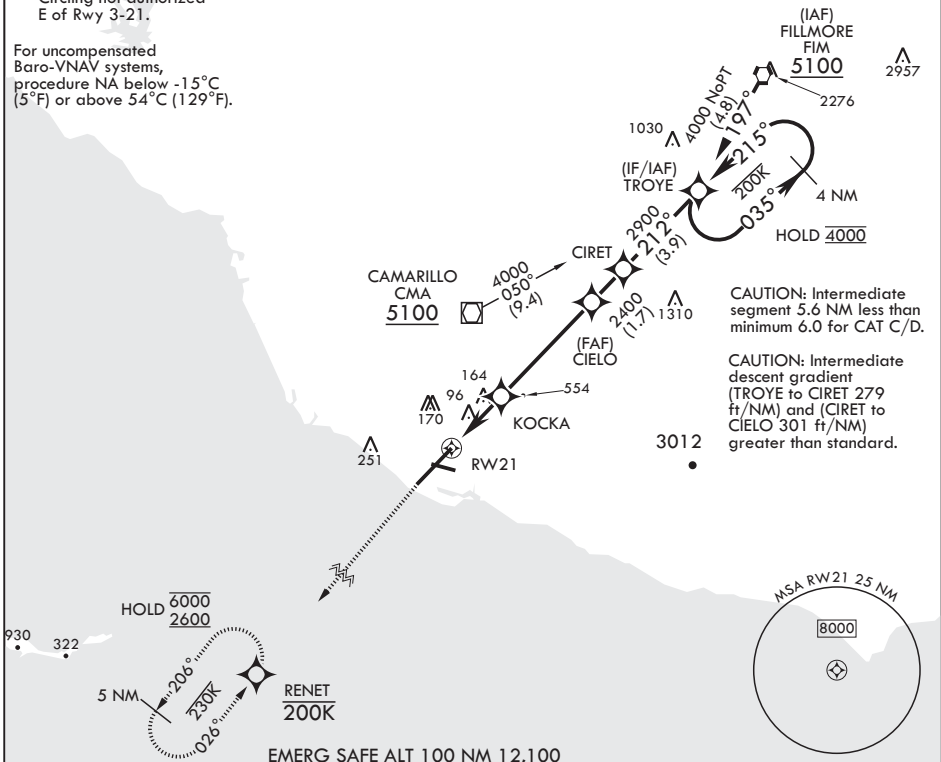
MISSED APPROACH: Climb to 600 then climbing left turn to 2600 direct RENET and hold.

* When ALS inop, increase vis to 7/8 mile.
 ** When ALS inop, increase CAT AB vis to 1 mile; CAT CD vis to 1 3/8 miles.

ATIS*	APP CON/DEP CON	TOWER*	GND CON	CLNC DEL	ASR/PAR
125.55 363.05	128.65 307.275	124.85 290.375	121.6 360.2	120.75 279.55	

*** Circling not authorized
 E of Rwy 3-21.

For uncompensated Baro-VNAV systems, procedure NA below -15°C (5°F) or above 54°C (129°F).



CATEGORY	A	B	C	D
LNAV/VNAV DA*	289-1/2	276	(300-1/2)	
LNAV MDA**	460-1/2	447 (500-1/2)	460-3/8	447 (500-3/8)
CIRCLING***	460-1 447 (500-1)	520-1 507 (600-1)	520-1 1/2 507 (600-1 1/2)	600-2 587 (600-2)

OXNARD, CALIFORNIA

34°07'N - 119°07'W POINT MUGU NAS (NAVAL BASE VENTURA CO) (KNTD)

Amdt 7 29DEC22

RNAV (GPS) RWY 21

SW-3, 28 NOV 2024 to 26 DEC 2024

SW-3, 28 NOV 2024 to 26 DEC 2024