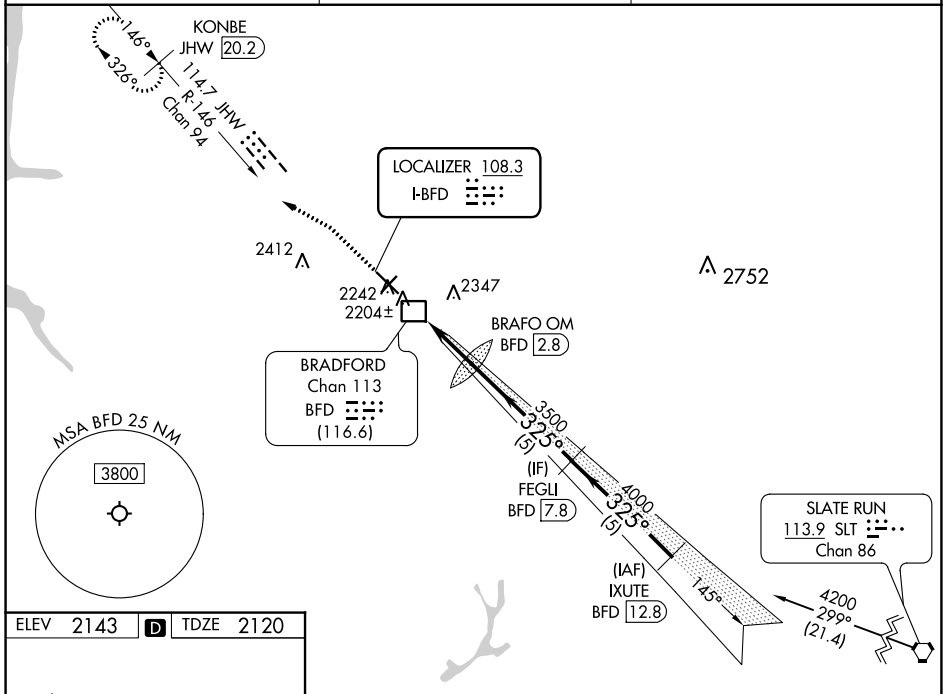


LOC I-BFD 108.3	APP CRS 325°	Rwy Idg TDZE Apt Elev	6306 2120 2143
---------------------------	------------------------	-----------------------------	---

ILS or LOC RWY 32

BRADFORD RGNL (BFD)

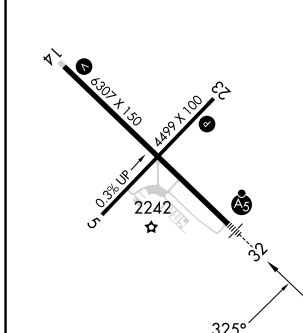
DME required		MALSR	MISSED APPROACH: Climb to 2600 then climbing left turn to 4500 on heading 310° and on JHW VOR/DME R-146 to KONBE/JHW 20.2 DME and hold.
<p>⚠ NA Inop table does not apply to S-ILS 32 and S-LOC 32 Cats A and B. For inop ALS, increase S-LOC 32 Cat C/D visibility to 1½ SM.</p>			
ASOS 133.825	CLEVELAND CENTER 124.325 353.85	UNICOM 123.075 (CTAF) 0	



NE-4, 28 NOV 2024 to 26 DEC 2024

NE-4, 28 NOV 2024 to 26 DEC 2024

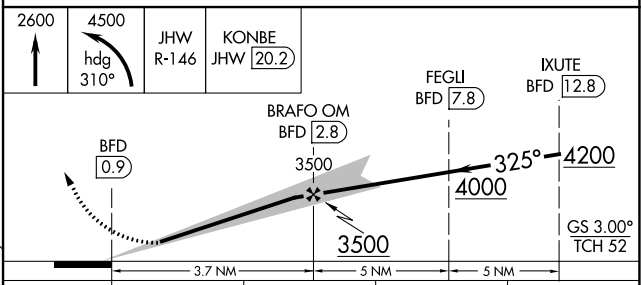
ELEV	2143	D	TDZE	2120
------	------	----------	------	------



MIRL Rwy 5-23 **0**
HIRL Rwy 14-32 **0**
REIL Rwys 5, 14 and 23 **0**

FAF to MAP 3.7 NM

Knots	60	90	120	150	180
Min:Sec	3:42	2:28	1:51	1:29	1:14



CATEGORY	A	B	C	D
S-ILS 32		2370-1	250 (300-1)	
S-LOC 32		2480-1	360 (400-1)	
C CIRCLING	2600-1 457 (500-1)	2620-1 477 (500-1)	2720-1½ 577 (600-1½)	2760-2 617 (700-2)