

LOC I-INS 108.7	APP CRS 077°	Rwy ldg 6118 TDZE 399 Apt Elev 403
---------------------------	------------------------	--

ILS or LOC RWY 8 LANCASTER (LNS)

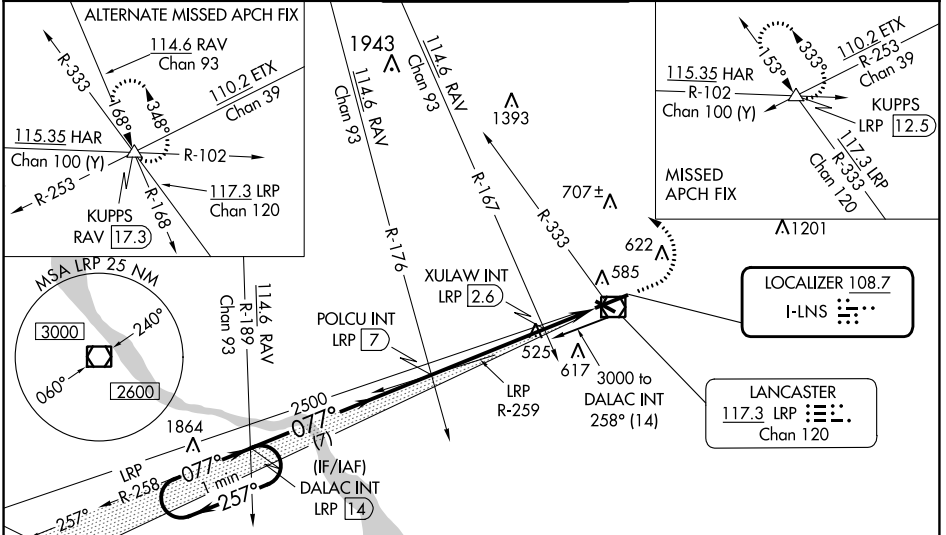
⚠ Night landing: Rwy 13, 31 NA. When local altimeter setting not received, use Harrisburg Intl altimeter setting and increase S-ILS DA to 664 feet; increase all MDA's 80 feet and visibility S-LOC 8 Cats C/D and Circling Cats B/D visibility 1/4 SM, increase Circling Cat C visibility 1/2 SM, increase XULAW fix minimums S-LOC 8 and Circling Cats C/D visibility 1/4 SM. For inop MALSR, increase S-LOC 8 Cats C and D visibility 3/8 mile. For inop MALSR when using Harrisburg Intl altimeter setting increase S-ILS 8 visibility all Cats 1/8 mile, S-LOC 8 Cats B visibility 3/4 mile, Cat C, D 1 mile, increase Circling Cat B, D visibility 1/4 mile. XULAW Fix minimums increase S-LOC 8 Cats C and D visibility to 1 1/8 mile and Circling Cat C visibility to 1 1/4 mile.

MALSR



MISSED APPROACH: Climb to 1200 then climbing left turn to 3000 on LRP VOR/ DME R-333 to KUPPS INT/LRP 12.5 DME and hold.

ATIS 125.675	HARRISBURG APP CON 126.45 281.525	LANCASTER TOWER* 120.9 (CTAF) 0 251.1	GND CON 121.8	UNICOM 122.95
------------------------	---	--	-------------------------	-------------------------



NE-4, 28 NOV 2024 to 26 DEC 2024

NE-4, 28 NOV 2024 to 26 DEC 2024

*1160 when using Harrisburg Intl altimeter setting.	1200	3000	KUPPS	ELEV 403	TDZE 399												
One Minute Holding Pattern	DALAC INT LRP (14)	POLCU INT LRP (7)	XULAW INT LRP (2.6)														
3000 ← 257°	← 077°	2500	← 077°														
GS 3.00° TCH 40	coincident	2500	*1080														
7 NM	4.4 NM	2.1 NM															
CATEGORY	A	B	C	D													
S-ILS 8	599-1/2		200 (200-1/2)														
S-LOC 8	1080-1/2 681 (700-1/2)		1080-1 1/2 681 (700-1 1/2)														
CIRCLING	1080-1 677 (700-1)		1080-2 677 (700-2)		1080-2 1/4 677 (700-2 1/4)												
XULAW FIX MINIMUMS (DUAL VOR RECEIVERS OR DME REQUIRED)																	
S-LOC 8	800-1/2 401 (400-1/2)		800-3/4 401 (400-3/4)														
CIRCLING	940-1 537 (600-1)		960-1 1/2 557 (600-1 1/2)		1060-2 657 (700-2)												
FAF to MAP 6.5 NM																	
<table border="1"> <tr> <td>Knots</td> <td>60</td> <td>90</td> <td>120</td> <td>150</td> <td>180</td> </tr> <tr> <td>Min:Sec</td> <td>6:30</td> <td>4:20</td> <td>3:15</td> <td>2:36</td> <td>2:10</td> </tr> </table>						Knots	60	90	120	150	180	Min:Sec	6:30	4:20	3:15	2:36	2:10
Knots	60	90	120	150	180												
Min:Sec	6:30	4:20	3:15	2:36	2:10												