

WAAS CH 77915 W08A	APP CRS 077°	Rwy Idg TDZE 399 Apt Elev 403	6118
--	------------------------	---	-------------

RNAV (GPS) RWY 8

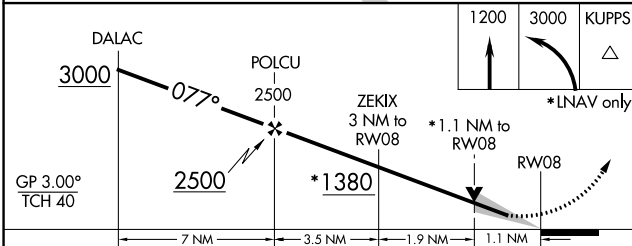
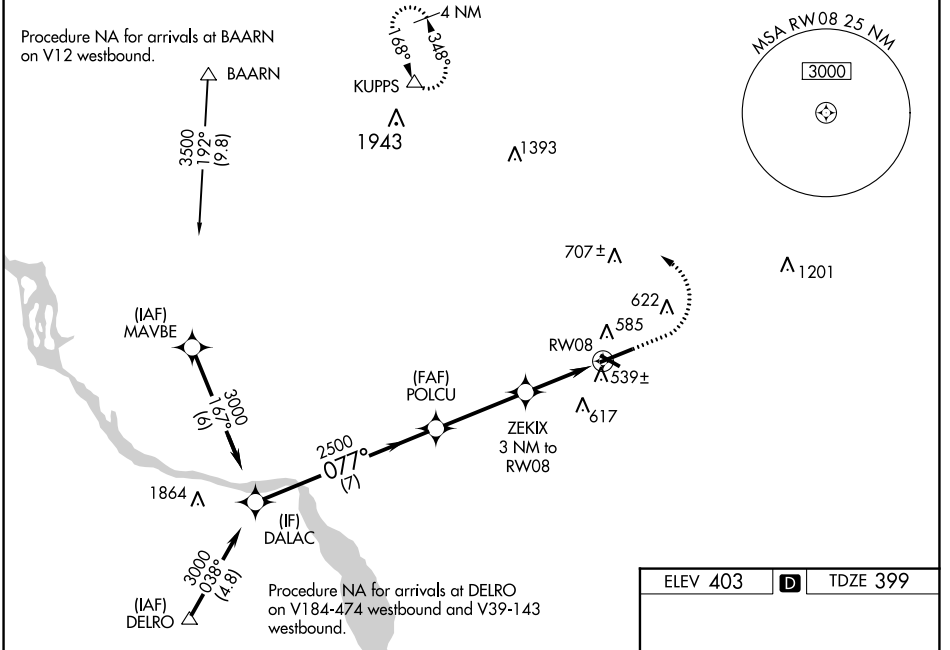
LANCASTER (LNS)

For uncompensated Baro-VNAV systems, LNAV/VNAV NA below -15°C (5°F) or above 54°C (130°F). DME/DME RNP-0.3 NA. When local altimeter setting not received, use Harrisburg Intl altimeter setting and increase all DA 64 feet and all MDA 80 feet, increase LNAV/VNAV all Cats visibility 1/4 mile, LNAV and Circling Cats C and D visibility 1/4 mile. Baro-VNAV and VDP NA when using Harrisburg Intl altimeter setting. Night landing: Rwy 13, 31 NA. For inoperative MALS R increase LNAV/VNAV all Cats visibility to 1 1/4 mile, and LNAV Cats C/D visibility to 1 1/2 mile. For inoperative LNAV when using Harrisburg Intl altimeter setting, increase LPV all Cats visibility to 1/2 mile, LNAV/VNAV all Cats visibility to 1 1/2 mile and LNAV Cats C/D visibility to 1 1/2 mile.

MALS R

MISSED APPROACH:
Climb to 1200 then climbing left turn to 3000 direct KUPPS and hold.

ATIS 125.675	HARRISBURG APP CON 126.45 281.525	LANCASTER TOWER ★ 120.9 (CTAF) 251.1	GND CON 121.8	UNICOM 122.95
------------------------	---	---	-------------------------	-------------------------



ELEV 403 **D** TDZE 399

Diagram of RWY 8 showing MALS R, TWX 476, and various navigation aids. Includes a note for 0.3% UP.

REIL Rwy 31 **1**
HIRL Rwy 8-26 **1**
MIRL Rwy 13-31 **1**

NE-4, 28 NOV 2024 to 26 DEC 2024

NE-4, 28 NOV 2024 to 26 DEC 2024