

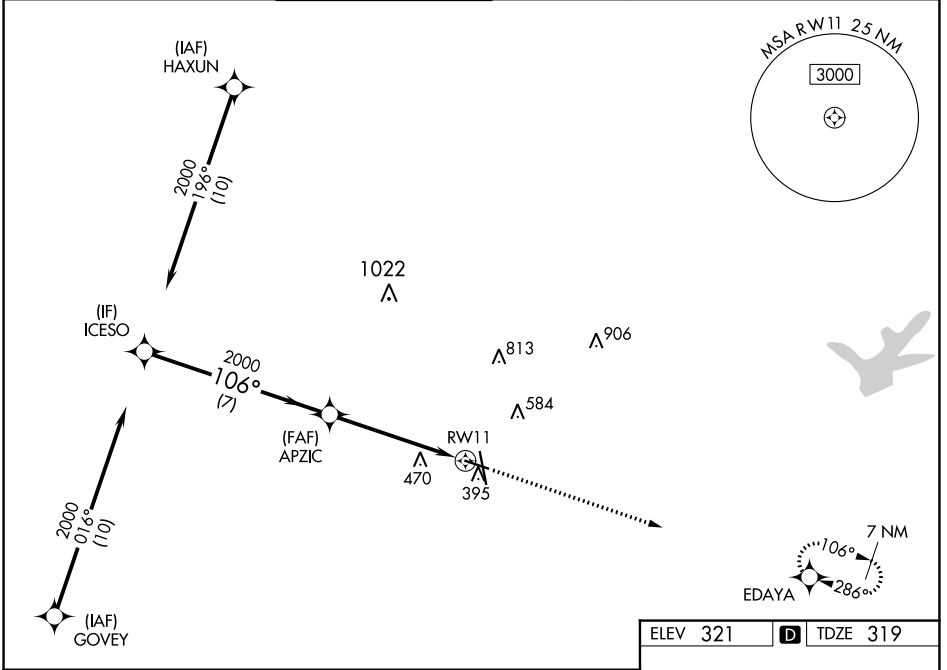
WAAS CH <b>65632</b> <b>W11A</b>	APP CRS <b>106°</b>	Rwy Idg TDZE Apt Elev	<b>5158</b> <b>319</b> <b>321</b>
--	------------------------	-----------------------------	---

# RNAV (GPS) RWY 11

EASTERWOOD FLD (CLL)

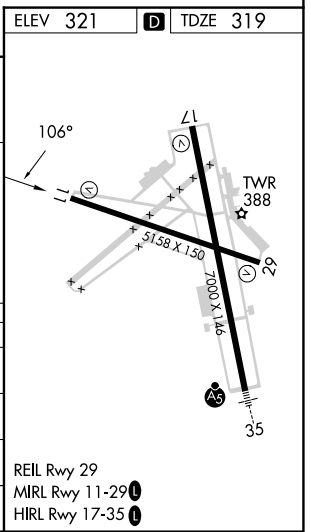
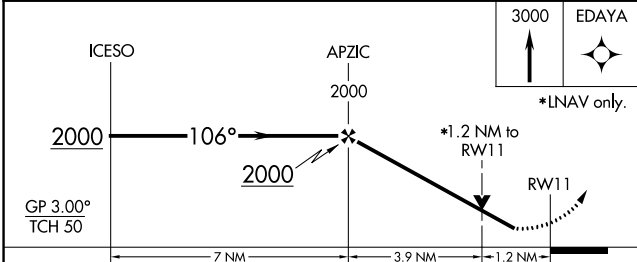
RNP APCH.		MISSED APPROACH: Climb to 3000 direct EDAYA and hold.			
For uncompensated Baro-VNAV systems, LNAV/VNAV NA below -3°C or above 54°C. Rwy 11 helicopter visibility reduction below 3/4 SM NA.					

ATIS <b>126.85</b>	HOUSTON APP CON <b>134.3 360.85</b>	EASTERWOOD TOWER ★ <b>118.5 (CTAF) 0 284.7</b>	GND CON <b>128.7 284.7</b>	CLNC DEL <b>128.7</b>	CLNC DEL <b>120.4</b> <small>(when twr closed)</small>	UNICOM <b>122.95</b>
-----------------------	--	---	-------------------------------	--------------------------	--	-------------------------



SC-5, 28 NOV 2024 to 26 DEC 2024

SC-5, 28 NOV 2024 to 26 DEC 2024



CATEGORY	A	B	C	D	E
LPV DA	569-3/4		250 (300-3/4)		
LNAV/VNAV DA	641-1		322 (400-1)		
LNAV MDA	740-1	421 (500-1)	740-1 1/4	421 (500-1 1/4)	
CIRCLING	860-1 539 (600-1)	880-1 559 (600-1)	1000-2 679 (700-2)	1180-2 3/4 859 (900-2 3/4)	1180-3 859 (900-3)

REIL Rwy 29  
MIRL Rwy 11-29   
HIRL Rwy 17-35