

WAAS CH 78322 W17A	APP CRS 166°	Rwy Idg TDZE Apt Elev	7000 321 321
--	------------------------	-----------------------------	---

RNAV (GPS) RWY 17

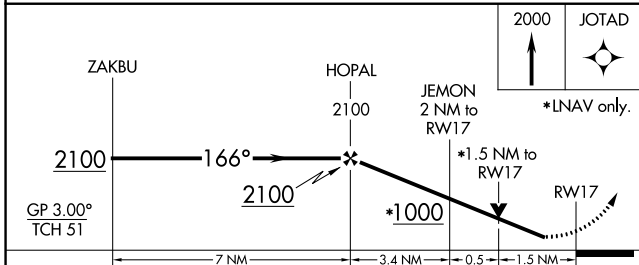
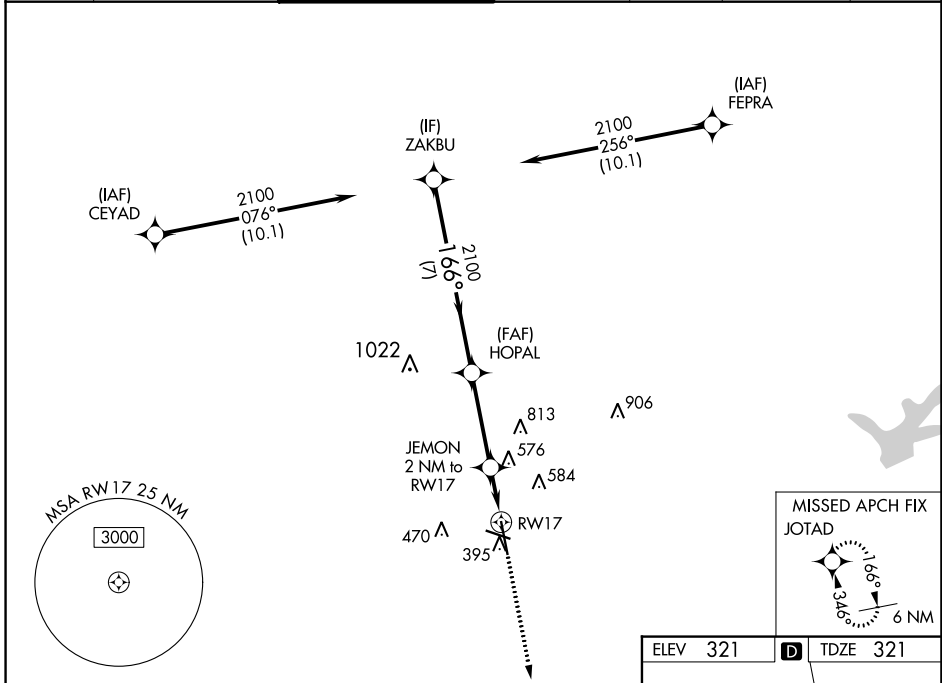
EASTERWOOD FLD (CLL)

RNP APCH.

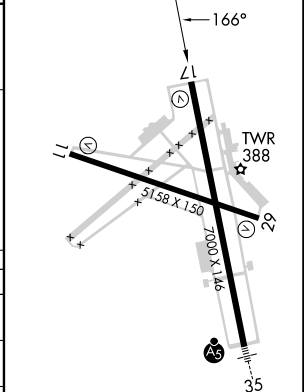
▽ **△** For uncompensated Baro-VNAV systems, LNAV/VNAV NA below -3°C or above 54°C. Rwy 17 helicopter visibility reduction below 3/4 SM NA.

MISSED APPROACH: Climb to 2000 direct JOTAD and hold.

ATIS 126.85	HOUSTON APP CON 134.3 360.85	EASTERWOOD TOWER ★ 118.5 (CTAF) 0 284.7	GND CON 128.7 284.7	CLNC DEL 128.7	CLNC DEL 120.4 (when twr closed)	UNICOM 122.95
-----------------------	--	---	-------------------------------	--------------------------	---	-------------------------



ELEV 321	D TDZE 321
----------	-------------------



CATEGORY	A	B	C	D	E
LPV DA	571-3/4		250 (300-3/4)		
LNAV/VNAV DA	637-1		316 (400-1)		
LNAV MDA	840-1 519 (600-1)		840-1 3/8		519 (600-1 3/8)
C CIRCLING	860-1 539 (600-1)	880-1 559 (600-1)	1000-2 679 (700-2)	1180-2 3/4 859 (900-2 3/4)	1180-3 859 (900-3)

REIL Rwy 29
MIRL Rwy 11-29 **①**
HIRL Rwy 17-35 **①**

SC-5, 28 NOV 2024 to 26 DEC 2024

SC-5, 28 NOV 2024 to 26 DEC 2024