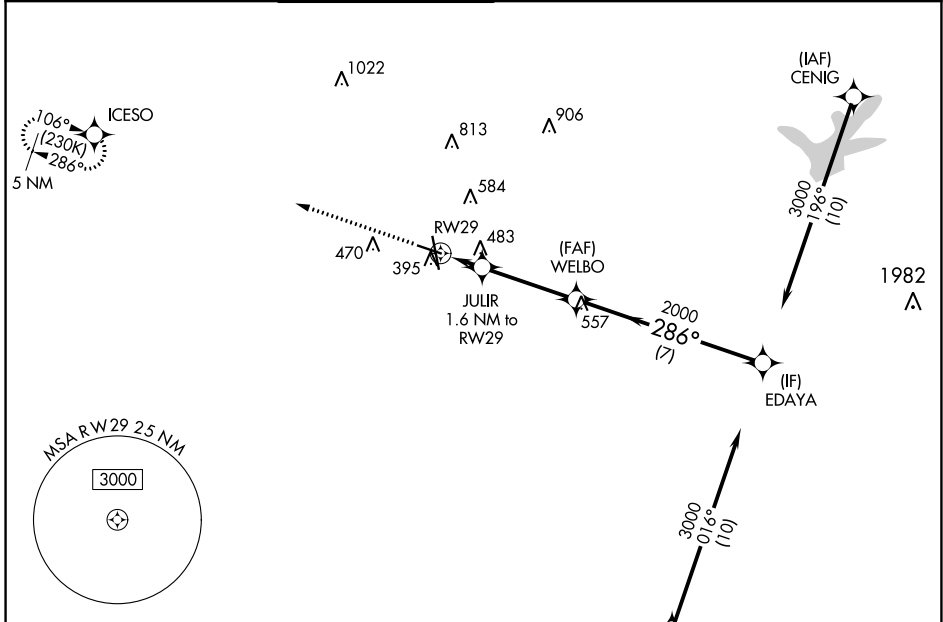


WAAS CH 87022 W29A	APP CRS 286°	Rwy Idg TDZE Apt Elev	5158 314 321
----------------------------------------	------------------------	-----------------------------	-----------------------------------------

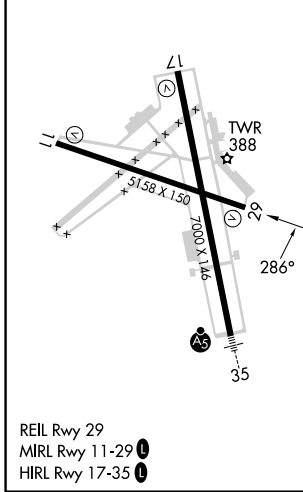
RNAV (GPS) RWY 29

EASTERWOOD FLD (CLL)

RNP APCH.		MISSED APPROACH: Climb to 2000 direct ICESO and hold.						
<p>⚠ Baro-VNAV NA when using Caldwell altimeter setting. For uncompensated Baro-VNAV systems, LNAV/VNAV NA below -3°C or above 54°C. Rwy 29 helicopter visibility reduction below ¾ SM NA.</p>		ATIS 126.85	HOUSTON APP CON 134.3 360.85	EASTERWOOD TOWER ★ 118.5 (CTAF) 0 284.7	GND CON 128.7 284.7	CLNC DEL 128.7	CLNC DEL 120.4 (when twr closed)	UNICOM 122.95



ELEV 321	D	TDZE 314
----------	----------	----------



ELEV 321	D	TDZE 314	<p>2000 ICESO</p> <p>*LNAV only.</p> <p>JULIR 1.6 NM to RWY 29</p> <p>WELBO 2000</p> <p>EDAYA 3000</p> <p>GP 3.00° TCH 54</p>																																							
			<table border="1"> <thead> <tr> <th>CATEGORY</th> <th>A</th> <th>B</th> <th>C</th> <th>D</th> <th>E</th> </tr> </thead> <tbody> <tr> <td>LPV DA</td> <td colspan="2">564-¾</td> <td colspan="3">250 (300-¾)</td> </tr> <tr> <td>LNAV/VNAV DA</td> <td colspan="2">762-1⅜</td> <td colspan="3">448 (500-1⅝)</td> </tr> <tr> <td>LNAV MDA</td> <td>740-1</td> <td>426 (500-1)</td> <td>740-1¼</td> <td colspan="2">426 (500-1¼)</td> </tr> <tr> <td rowspan="2">C CIRCLING</td> <td>860-1</td> <td>880-1</td> <td>1000-2</td> <td>1180-2¾</td> <td>1180-3</td> </tr> <tr> <td>539 (600-1)</td> <td>559 (600-1)</td> <td>679 (700-2)</td> <td>859 (900-2¾)</td> <td>859 (900-3)</td> </tr> </tbody> </table>					CATEGORY	A	B	C	D	E	LPV DA	564-¾		250 (300-¾)			LNAV/VNAV DA	762-1⅜		448 (500-1⅝)			LNAV MDA	740-1	426 (500-1)	740-1¼	426 (500-1¼)		C CIRCLING	860-1	880-1	1000-2	1180-2¾	1180-3	539 (600-1)	559 (600-1)	679 (700-2)	859 (900-2¾)	859 (900-3)
CATEGORY	A	B	C	D	E																																					
LPV DA	564-¾		250 (300-¾)																																							
LNAV/VNAV DA	762-1⅜		448 (500-1⅝)																																							
LNAV MDA	740-1	426 (500-1)	740-1¼	426 (500-1¼)																																						
C CIRCLING	860-1	880-1	1000-2	1180-2¾	1180-3																																					
	539 (600-1)	559 (600-1)	679 (700-2)	859 (900-2¾)	859 (900-3)																																					

SC-5, 28 NOV 2024 to 26 DEC 2024

SC-5, 28 NOV 2024 to 26 DEC 2024