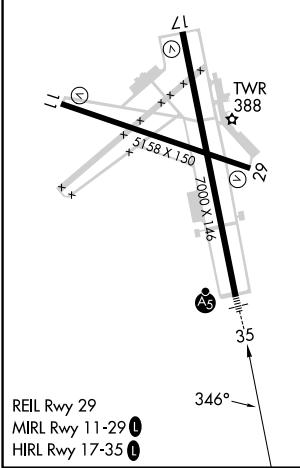
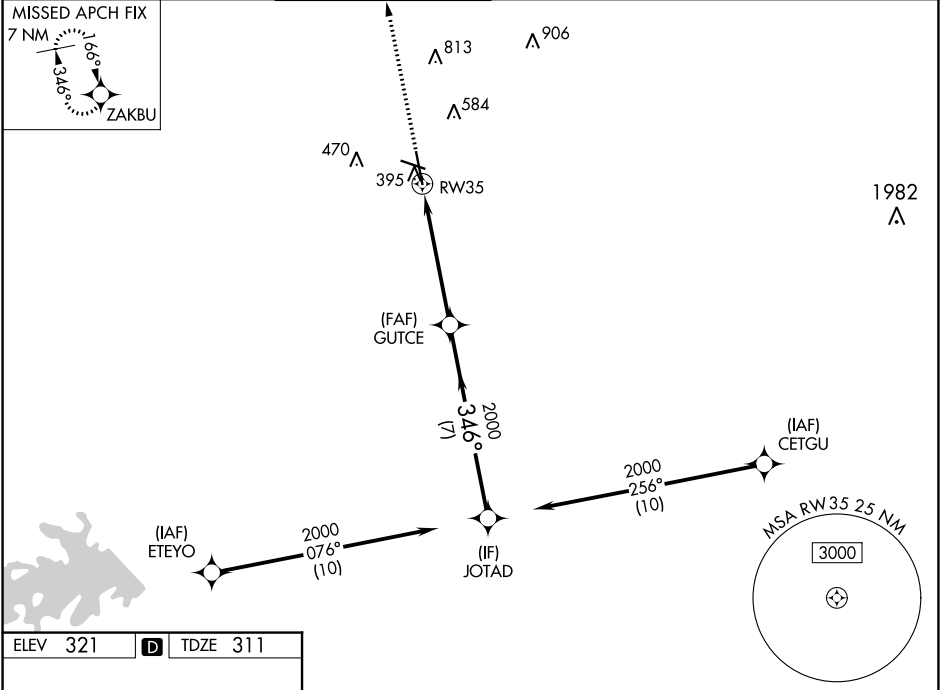


WAAS CH 63122 W35A	APP CRS 346°	Rwy Idg 6932 TDZE 311 Apt Elev 321
--	------------------------	---

RNAV (GPS) RWY 35

EASTERWOOD FLD (CLL)

RNP APCH.		MALSR		MISSED APPROACH: Climb to 2100 direct ZAKBU and hold.		
<p>▼ For uncompensated Baro-VNAV systems, LNAV/VNAV NA below -3°C or above 54°C. For inop ALS, increase LPV Cat E and LNAV/VNAV all Cats visibility to ¾ SM, increase LNAV Cat E visibility to 1¾ SM.</p>						
ATIS 126.85	HOUSTON APP CON 134.3 360.85	EASTERWOOD TOWER ★ 118.5 (CTAF) 0 284.7	GND CON 128.7 284.7	CLNC DEL 128.7	CLNC DEL 120.4 (when twr closed)	UNICOM 122.95



ELEV 321	D	TDZE 311			
2100	ZAKBU				
*LNAV only.					
<p>Diagram showing distances: 1.3 NM to RWY 35, 3.9 NM to GUTCE, 7 NM to JOTAD.</p>					
CATEGORY	A	B	C	D	E
LPV DA		511-½	200 (200-½)		
LNAV/VNAV DA		563-½	252 (300-½)		
LNAV MDA	760-½	449 (500-½)	760-⅞	449 (500-⅞)	
C CIRCLING	860-1 539 (600-1)	880-1 559 (600-1)	1000-2 679 (700-2)	1180-2¾ 859 (900-2¾)	1180-3 859 (900-3)

SC-5, 28 NOV 2024 to 26 DEC 2024

SC-5, 28 NOV 2024 to 26 DEC 2024