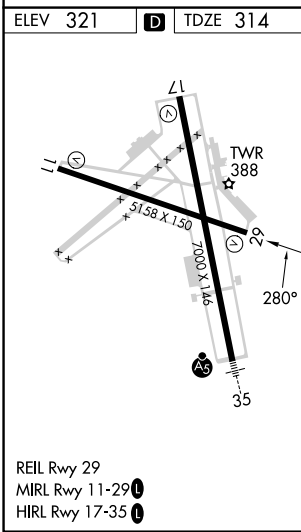
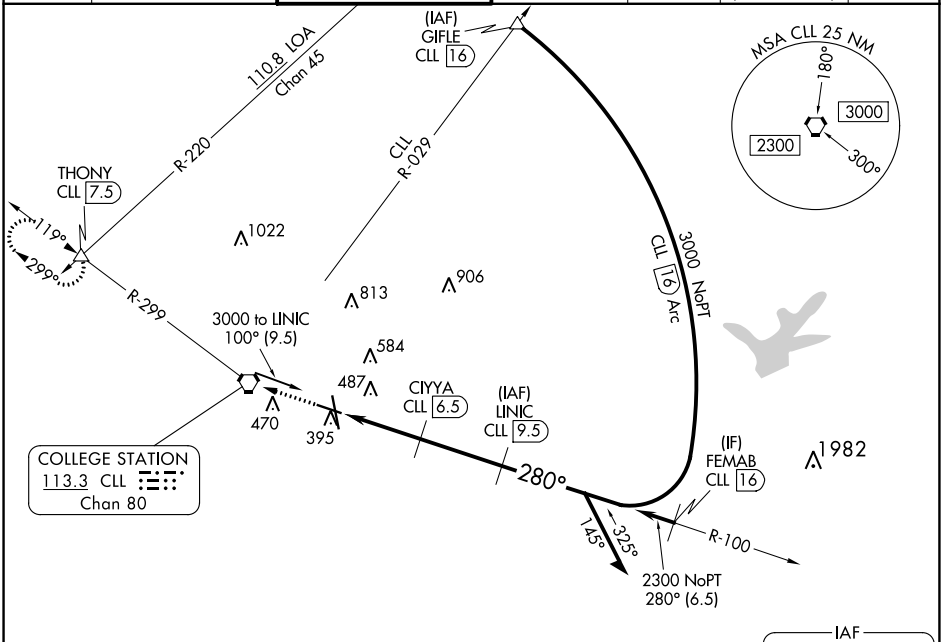


VORTAC CLL 113.3 Chan 80	APP CRS 280°	Rwy Idg 5158 TDZE 314 Apt Elev 321
--	------------------------	---

VOR RWY 29

EASTERWOOD FLD (CLL)

DME required for procedure entry. DME required.		MISSED APPROACH: Climb to 2500 direct CLL VORTAC then on CLL VORTAC R-299 to THONY INT/CLL 7.5 DME and hold.						
▼ ▲ Rwy 29 helicopter visibility reduction below ¾ SM NA.		ATIS 126.85	HOUSTON APP CON 134.3 360.85	EASTERWOOD TOWER ★ 118.5 (CTAF) 284.7	GND CON 128.7 284.7	CLNC DEL 128.7	CLNC DEL 120.4 (when twr closed)	UNICOM 122.95



ELEV 321	D	TDZE 314		
2500	CLL	THONY	LINIC	Remain within 10 NM
↑	CLL R-299	△	CLL 9.5	
			3000	
	CLL 3.5	CIYYA CLL 6.5	3000 NoPT (1.4 A)	
			338°	
			100°	
			280°	
			2300	
			1320	
			3.00° TCH 54	
	1.4 NM	1.7 NM	3 NM	
CATEGORY	A	B	C	D
S-29	800-1	486 (500-1)	800-1⅓	486 (500-1⅓)
CIRCLING	860-1 539 (600-1)	880-1 559 (600-1)	1000-2 679 (700-2)	1180-2¾ 859 (900-2¾)

SC-5, 28 NOV 2024 to 26 DEC 2024

SC-5, 28 NOV 2024 to 26 DEC 2024