

HI-TACAN Z RWY 5L

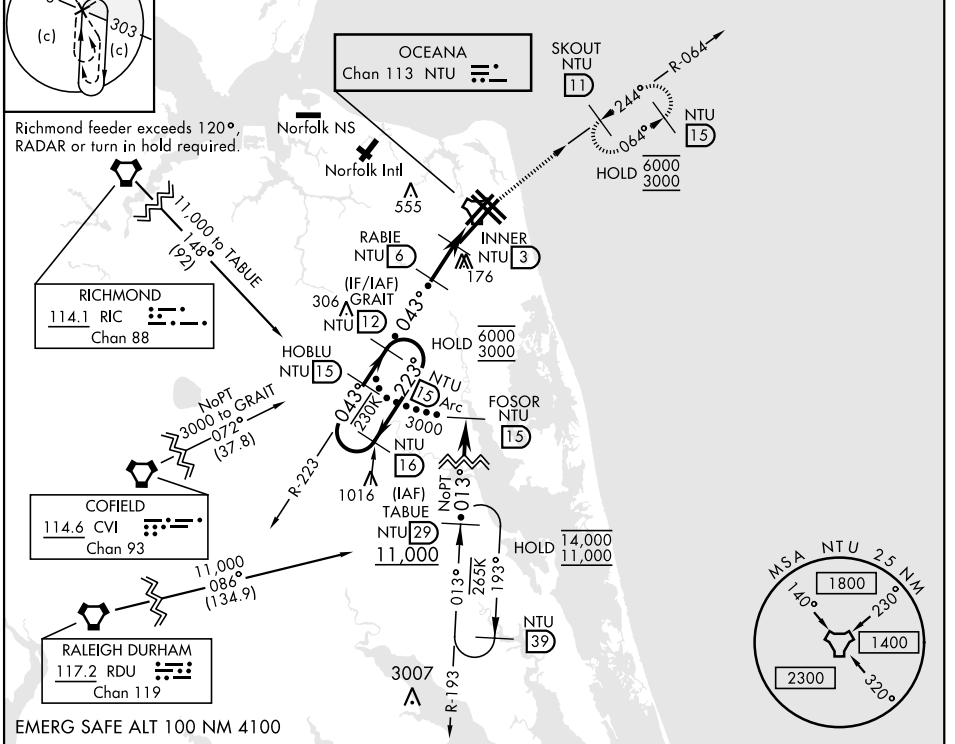
TACAN NTU Chan 113	APCH CRS 043°	Rwy Idg 8000 TDZE 20 Arprt Elev 22	AL-934 [USN]	OCEANA NAS (APOLLO SOUCEK FLD)	(KNTU)
-----------------------	------------------	---	--------------	--------------------------------	--------

MISSED APPROACH: Climb to 3000 via R-223 to NTU TACAN and via R-064 to SKOUT and hold.

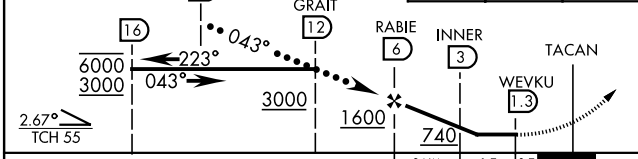
ATIS 317.6	APP/DEP CON 123.9 266.8	TOWER 127.075 360.2	GND CON 119.6 336.4	CLNC DEL 254.4	ASR/ PAR
---------------	----------------------------	------------------------	------------------------	-------------------	-------------

	CAUTION: Final approach crs 17° from rwy cntrl at 3000' from thld.					
	Knots V/V(fpm)	60 210	120 420	180 630	240 840	300 1050

Min climb of 210 ft/NM to 3000 - Controlling Obstacle Unk



3000	NTU	NTU R-223	NTU R-064	ELEV 22	TDZE 20
------	-----	-----------	-----------	---------	---------



CATEGORY	C	D	E
S-5L	420-1½	400 (400-1½)	
CIRCLING	600-1½ 578 (600-1½)	600-2 578 (600-2)	900-3 878 (900-3)

VIRGINIA BEACH, VIRGINIA 36°49'N-76°02'W OCEANA NAS (APOLLO SOUCEK FLD) (KNTU)

HI-TACAN Z RWY 5L

NE-3, 28 NOV 2024 to 26 DEC 2024

NE-3, 28 NOV 2024 to 26 DEC 2024