

HI-TACAN Z RWY 5R

TACAN NTU Chan 113	APCH CRS 043°	Rwy Idg 12,001
		TDZE 19
		Arprt Elev 22

[USN]

OCEANA NAS (APOLLO SOUCEK FLD) (KNTU)

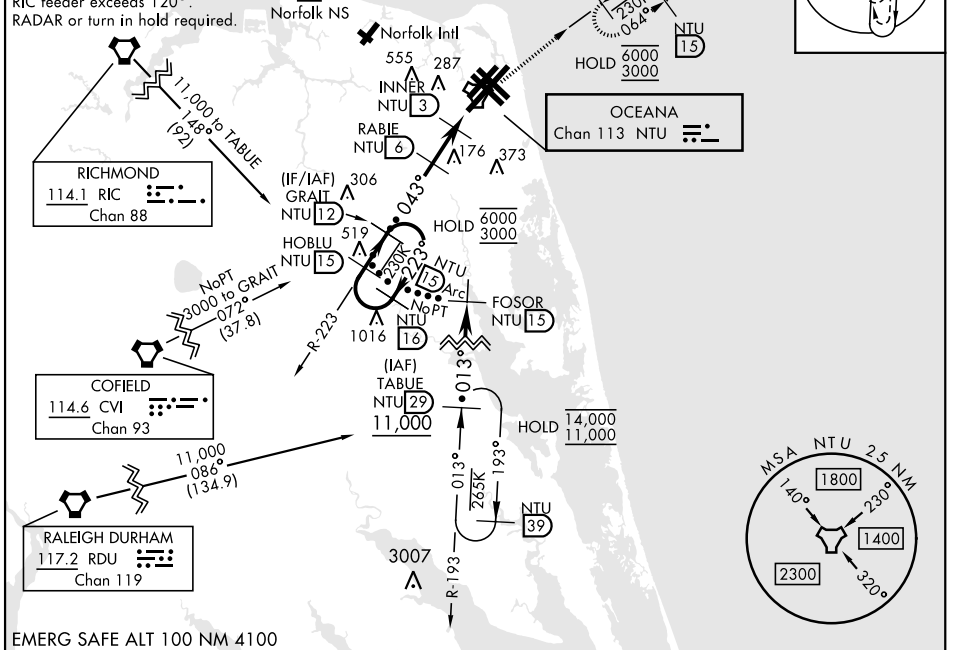
<p>▲ * When ALS inop, increase CAT CDE vis to 1½ miles.</p>		<p>ALSF-1</p>	<p>MISSED APPROACH: Climb to 3000 via R-223 to NTU TACAN, and via R-064 to SKOUT and hold.</p>			
ATIS 317.6	APP/DEP CON 123.9 266.8	TOWER 127.075 360.2	GND CON 119.6 336.4	CLNC DEL 254.4	ASR/PAR	

Knots	60	120	180	240	300	360
V/V(fpm)	210	420	630	840	1050	1260

Min climb of 210 ft/NM to 3000 - Controlling Obstacle Unk

CAUTION: Final approach crs 72° from rwy cntrln at 3000' from thld.

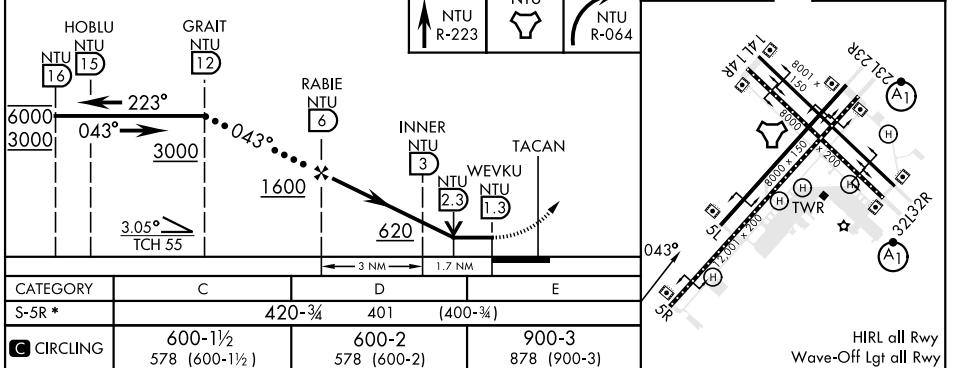
RIC feeder exceeds 120°. RADAR or turn in hold required.



NE-3, 28 NOV 2024 to 26 DEC 2024

NE-3, 28 NOV 2024 to 26 DEC 2024

EMERG SAFE ALT 100 NM 4100



HI-TACAN Z RWY 5R