

# TACAN Y RWY 32L/R

TACAN NTU Chan 113	APCH CRS 309°	Rwy ldg 32L 8000 32R 8001	TDZE 32L 22 32R 20	Arprt Elev 22
-----------------------	------------------	---------------------------------	--------------------------	------------------

[USN]  
OCEANA NAS (APOLLO SOUCEK FLD) (KNTU)

ALSF-1  

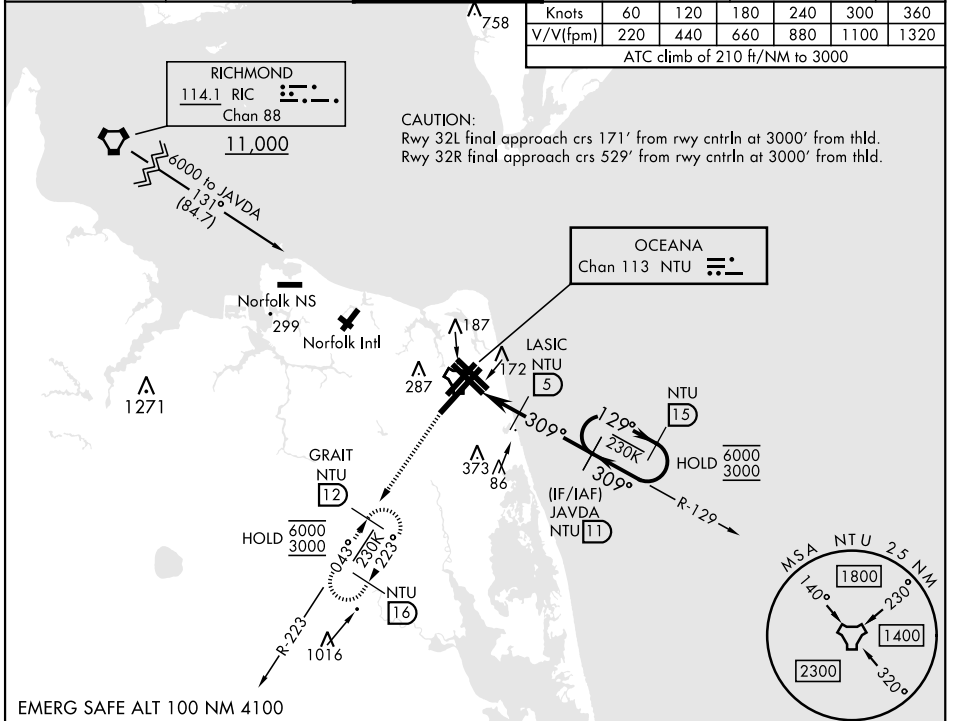
 A1
 

 MISSED APPROACH: Climbing left turn to 3000, intercept NTU TACAN R-223 to GRAIT and hold.

ATIS 317.6	APP/DEP CON 123.9 266.8	TOWER 127.075 360.2	GND CON 119.6 336.4	CLNC DEL 254.4	ASR/ PAR
---------------	----------------------------	------------------------	------------------------	-------------------	-------------

Knots	60	120	180	240	300	360
V/V(fpm)	220	440	660	880	1100	1320

ATC climb of 210 ft/NM to 3000

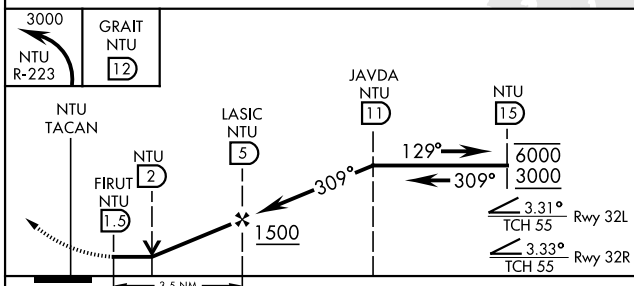


CAUTION:  
Rwy 32L final approach crs 171° from rwy cntrln at 3000' from thld.  
Rwy 32R final approach crs 529° from rwy cntrln at 3000' from thld.

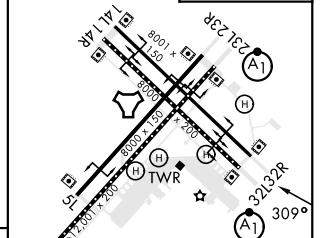
NE-3, 28 NOV 2024 to 26 DEC 2024

NE-3, 28 NOV 2024 to 26 DEC 2024

EMERG SAFE ALT 100 NM 4100



ELEV	22	TDZE 32L	22
		TDZE 32R	20



CATEGORY	A	B	C	D
S-32L *	440-1/2	418 (500-1/2)	440-3/4	418 (500-3/4)
S-32R	440-1	420 (500-1)	440-1 1/8	420 (500-1 1/8)
CIRCLING	500-1	478 (500-1)	600-1 1/2 578 (600-1/2)	600-2 578 (600-2)

HIRL all rwy's  
Wave-Off lgt all rwy's

# TACAN Y RWY 32L/R