

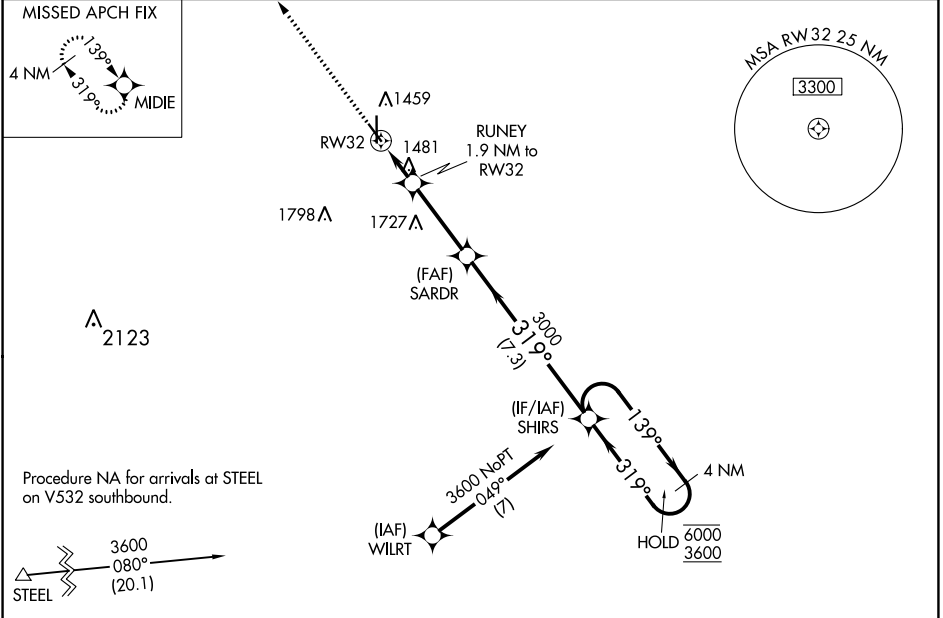
WAAS CH 58320 W32A	APP CRS 319°	Rwy Idg TDZE Apt Elev	4401 1312 1324
--	------------------------	-----------------------------	---

RNAV (GPS) RWY 32

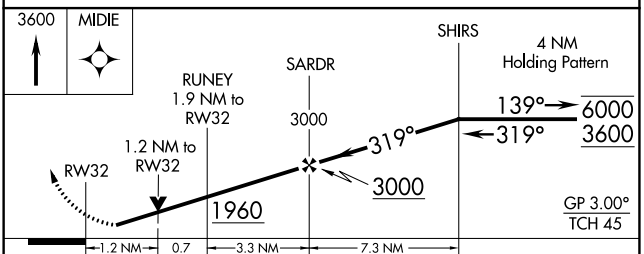
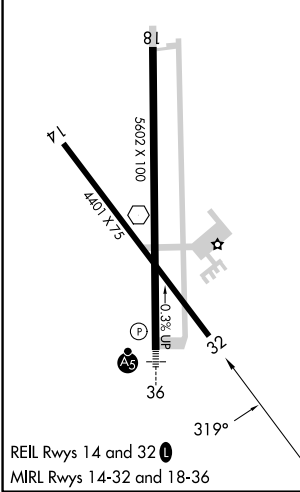
BEATRICE MUNI (BIE)

RNP APCH - GPS.	MISSED APPROACH: Climb to 3600 direct MIDIE and hold.
<p>▼ Rwy 32 helicopter visibility reduction below 3/4 SM NA.</p> <p>▲ For uncompensated Baro-VNAV systems, LNAV/VNAV NA below -17°C or above 54°C.</p>	

AWOS-3 125.325	MINNEAPOLIS CENTER 126.4 317.7	UNICOM 122.8 (CTAF)
--------------------------	--	-------------------------------



ELEV 1324	D	TDZE 1312
-----------	----------	-----------



CATEGORY	A	B	C	D
LPV DA		1562-1	250 (300-1)	
LNAV/VNAV DA		1685-1	373 (400-1)	
LNAV MDA	1740-1	428 (500-1)	1740-1¼	428 (500-1¼)
C CIRCLING	1820-1	496 (500-1)	2000-2 676 (700-2)	2100-2½ 776 (800-2½)

NC-2, 28 NOV 2024 to 26 DEC 2024

NC-2, 28 NOV 2024 to 26 DEC 2024