

VOR BIE <b>110.6</b>	APP CRS <b>176°</b>	Rwy Idg TDZE Apt Elev	<b>5602</b> <b>1324</b> <b>1324</b>
-------------------------	------------------------	-----------------------------	---

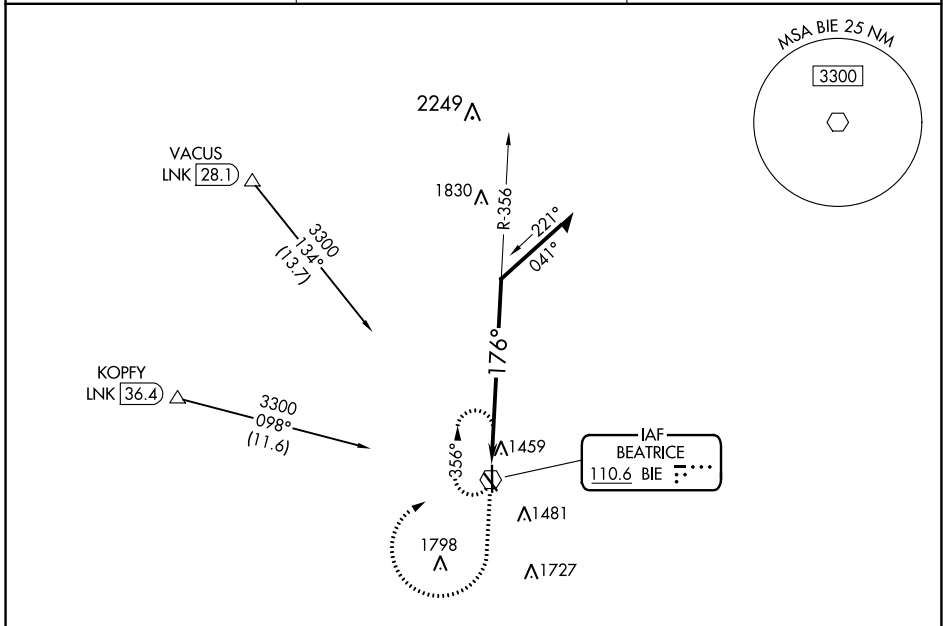
**VOR RWY 18**  
BEATRICE MUNI (BIE)

DME required for procedure entry.

**▽** Rwy 18 helicopter visibility reduction below 3/4 SM NA.

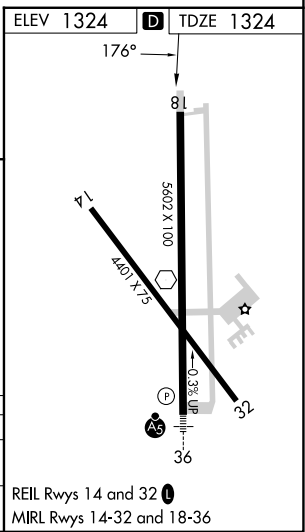
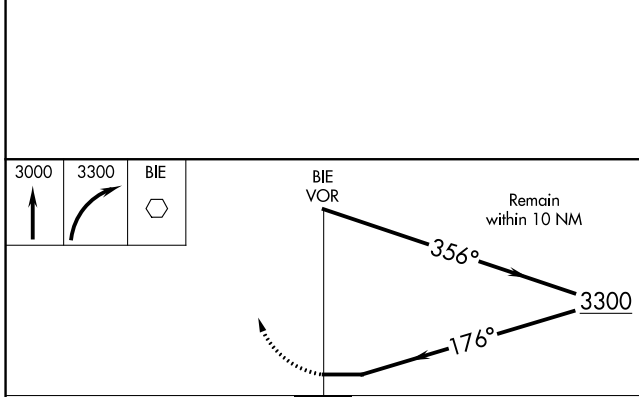
MISSED APPROACH: Climb to 3000 then climbing right turn to 3300 direct BIE VOR and hold.

AWOS-3 <b>125.325</b>	MINNEAPOLIS CENTER <b>126.4 317.7</b>	UNICOM <b>122.8 (CTAF)</b>
--------------------------	--	-------------------------------



NC-2, 28 NOV 2024 to 26 DEC 2024

NC-2, 28 NOV 2024 to 26 DEC 2024



CATEGORY	A	B	C	D
S-18	2180-1 856 (900-1)	2180-1¼ 856 (900-1¼)	2180-2½	856 (900-2½)
<b>C</b> CIRCLING	2180-1¼	856 (900-1¼)	2180-2½ 856 (900-2½)	2180-2¾ 856 (900-2¾)