

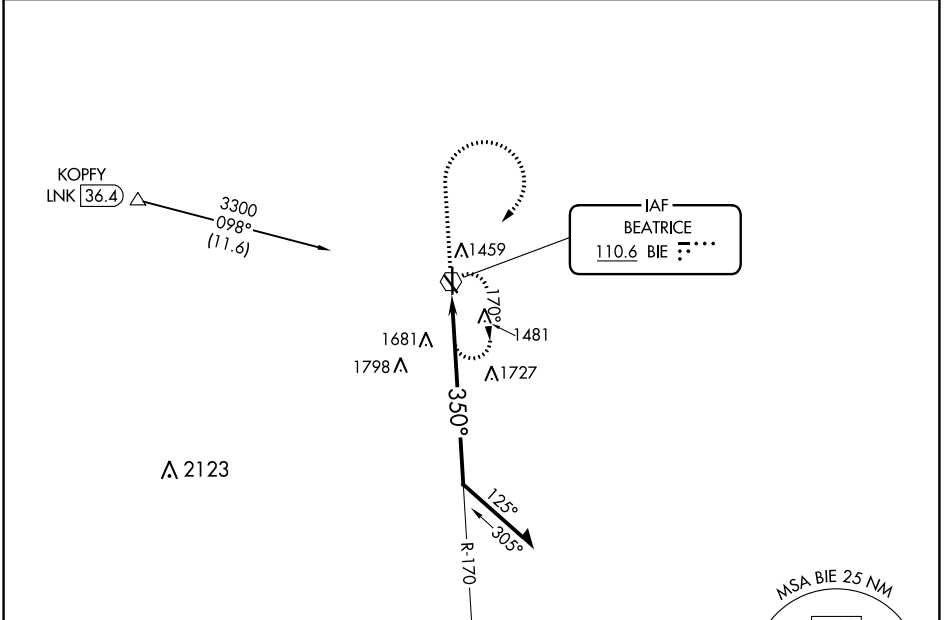
VOR BIE 110.6	APP CRS 350°	Rwy Idg TDZE Apt Elev	5602 1307 1324
-------------------------	------------------------	-----------------------------	---

VOR RWY 36

BEATRICE MUNI (BIE)

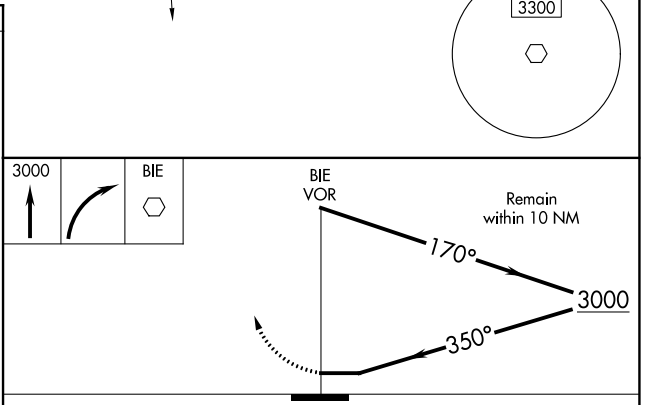
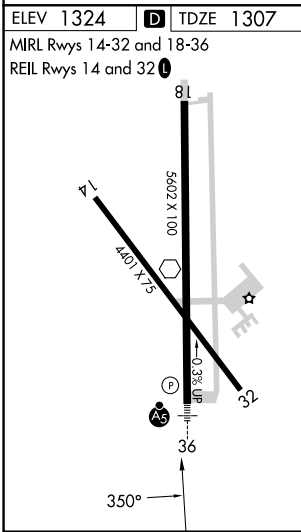
DME required for procedure entry.		MALSR 	MISSED APPROACH: Climb to 3000 then right turn direct BIE VOR and hold.
	For inop ALS, increase S-36 Cats A/B visibility to 1 SM and Cats C/D visibility to 2 SM.		

AWOS-3 125.325	MINNEAPOLIS CENTER 126.4 317.7	UNICOM 122.8 (CTAF)
--------------------------	--	-------------------------------



NC-2, 28 NOV 2024 to 26 DEC 2024

NC-2, 28 NOV 2024 to 26 DEC 2024



CATEGORY	A	B	C	D
S-36	2040- ³ / ₄	733 (800- ³ / ₄)	2040-1 ⁵ / ₈	733 (800-1 ⁵ / ₈)
<input checked="" type="checkbox"/> CIRCLING	2040-1	716 (800-1)	2040-2 716 (800-2)	2100-2 ¹ / ₂ 776 (800-2 ¹ / ₂)