

WAAS CH <b>69217</b> <b>W04A</b>	APP CRS <b>044°</b>	Rwy Idg TDZE Apt Elev	<b>7701</b> <b>889</b> <b>913</b>
--	------------------------	-----------------------------	---

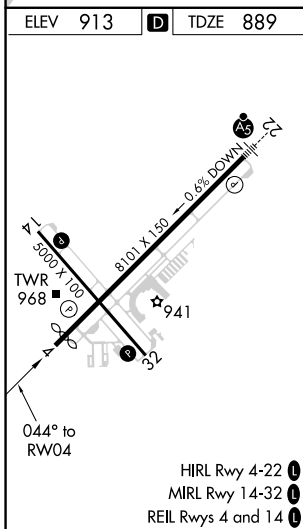
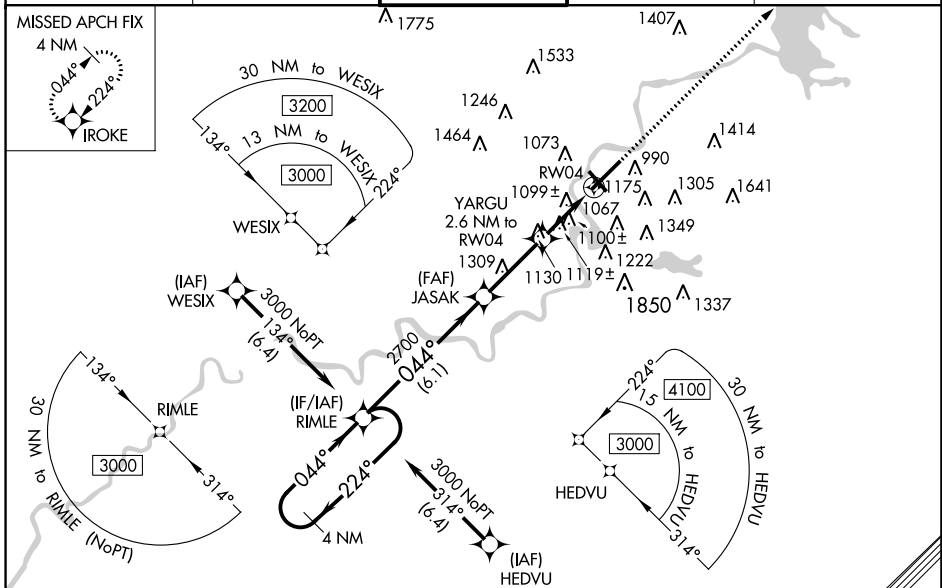
# RNAV (GPS) RWY 4

CHIPPEWA VALLEY RGNL (EAU)

**⚠** For uncompensated Baro-VNAV systems, LNAV/VNAV NA below -21°C (-5°F) or above 54°C (130°F). Baro-VNAV and VDP NA when using Rice Lake Rgnl/Carl's Fld altimeter setting. DME/DME RNP-0.3 NA. When local altimeter setting not received, use Rice Lake Rgnl/Carl's Fld altimeter setting and increase LPV DA to 1199, LNAV/VNAV DA to 1489 and all visibilities  $\frac{3}{8}$  SM. Increase all MDA 120 feet and LNAV Cat C/D and Circling Cat C visibility  $\frac{1}{4}$  SM. Circling Rwy 32 NA at night.

**MISSED APPROACH:**  
Climb to 3000 direct IROKE and hold.

ATIS <b>126.025</b>	MINNEAPOLIS CENTER <b>125.3 335.6</b>	<b>EAU CLAIRE TOWER*</b> <b>118.575 (CTAF)</b> <b>0</b>	GND CON <b>120.925</b>	UNICOM <b>122.95</b>
------------------------	--	--	---------------------------	-------------------------



ELEV 913	<b>D</b>	TDZE 889
----------	----------	----------

4 NM Holding Pattern	RIMLE	JASAK	YARGU	3000	IROKE
3000	← 224°	→ 044°	044°	2700	2.6 NM to RW04
GP 3.00°				*1740	*1.3 NM to RW04
TCH 44					RW04
	6.1 NM	3 NM	1.3 NM	1.3 NM	

CATEGORY	A	B	C	D
LPV DA		1089- $\frac{3}{4}$	200 (200- $\frac{3}{4}$ )	
LNAV/VNAV DA		1379-1 $\frac{5}{8}$	490 (500-1 $\frac{5}{8}$ )	
LNAV MDA	1360-1	471 (500-1)	1360-1 $\frac{3}{8}$	471 (500-1 $\frac{3}{8}$ )
<b>C</b> CIRCLING	1480-1 567 (600-1)	1540-1 627 (700-1)	1660-2 $\frac{1}{4}$ 747 (800-2 $\frac{1}{4}$ )	2200-3 1287 (1300-3)

EC-3, 28 NOV 2024 to 26 DEC 2024

EC-3, 28 NOV 2024 to 26 DEC 2024