

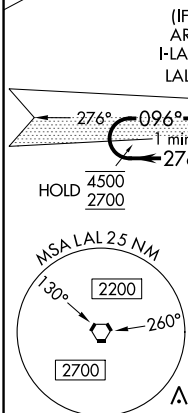
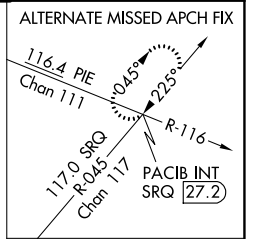
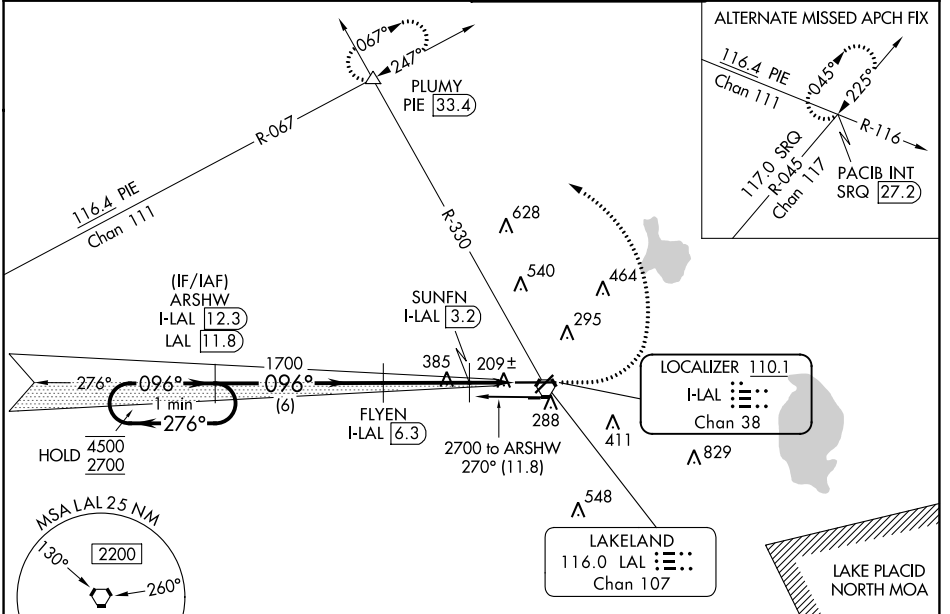
LOC/DME I-LAL <b>110.1</b> Chan <b>38</b>	APP CRS <b>096°</b>	Rwy Idg <b>8500</b> TDZE <b>132</b> Apt Elev <b>142</b>
---	------------------------	---

# ILS or LOC RWY 10

LAKELAND LINDER INTL (LAL)

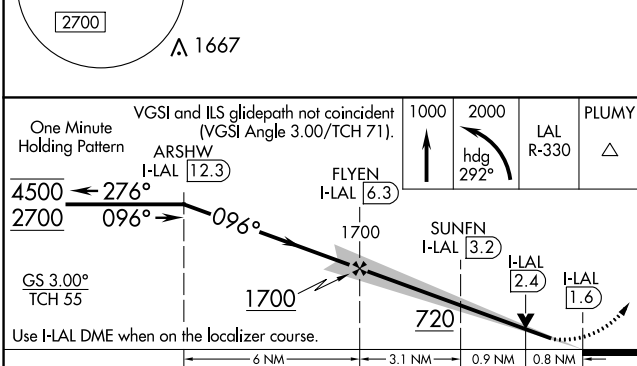
DME required.		ALSF-2	MISSED APPROACH: Climb to 1000 then climbing left turn to 2000 on heading 292° and on LAL VORTAC R-330 to PLUMY INT/PIE 33.4 DME and hold.
Circling NA to Rwys 8 and 26.			

ATIS <b>118.025</b>	TAMPA APP CON <b>120.65 290.3</b>	LAKELAND TOWER <b>124.5 236.775</b>	GND CON <b>121.4</b>
------------------------	--------------------------------------	--	-------------------------

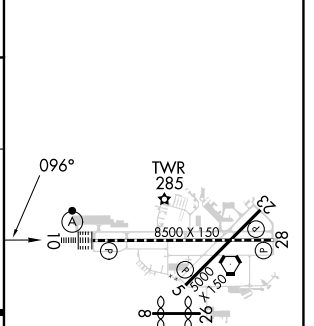


SE-3, 28 NOV 2024 to 26 DEC 2024

SE-3, 28 NOV 2024 to 26 DEC 2024



ELEV 142		TDZE 132
----------	--	----------



CATEGORY	A	B	C	D
S-ILS 10		332/18	200 (200-1/2)	
S-LOC 10		460/24	328 (400-1/2)	
CIRCLING	600-1 458 (500-1)	660-1 518 (600-1)	720-1 1/2 578 (600-1 1/2)	840-2 1/4 698 (700-2 1/4)

TDZ/CL Rwy 10  
HIRL Rwys 5-23 and 10-28