

WAAS CH <b>82605</b> <b>W28A</b>	APP CRS <b>276°</b>	Rwy Idg TDZE <b>142</b> Apt Elev <b>142</b>	<b>8500</b>
--	------------------------	---	-------------

# RNAV (GPS) RWY 28

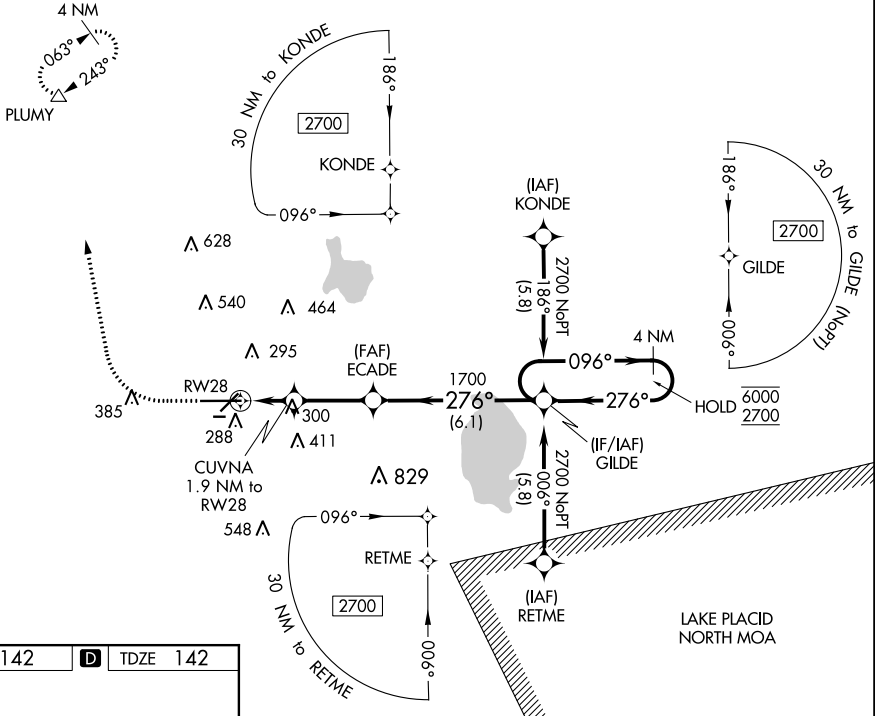
LAKELAND LINDER INTL (LAL)

RNP APCH-GPS.

**▼** Rwy 28 helicopter visibility reduction below RVR 4000 NA.  
**▲** For uncompensated Baro-VNAV systems, LNAV/VNAV NA below -15°C or above 54°C. Circling NA to Rws 8 and 26.

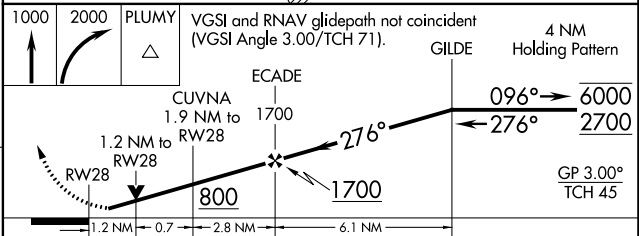
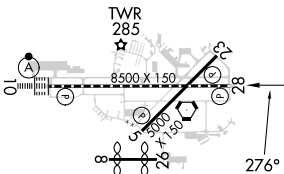
MISSED APPROACH: Climb to 1000 then climbing right turn to 2000 direct PLUMY and hold.

ATIS <b>118.025</b>	TAMPA APP CON <b>120.65 290.3</b>	LAKELAND TOWER <b>124.5 236.775</b>	GND CON <b>121.4</b>
------------------------	--------------------------------------	--	-------------------------



SE-3, 28 NOV 2024 to 26 DEC 2024

ELEV 142	<b>D</b> TDZE 142
----------	-------------------



TDZ/CL Rwy 10  
HIRL Rws 5-23 and 10-28