

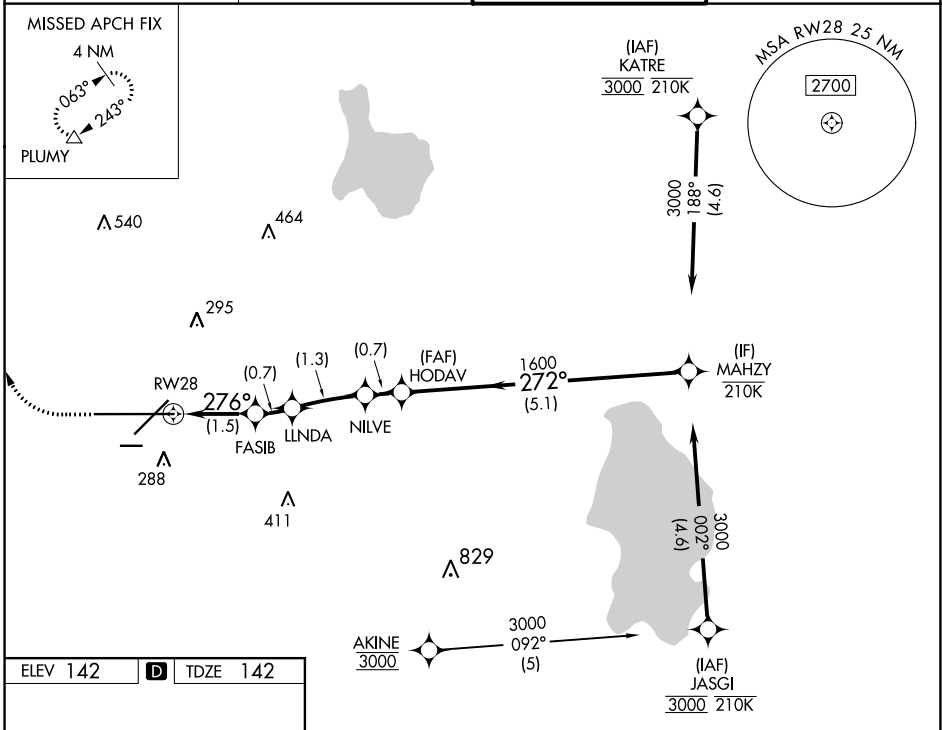
APP CRS <b>276°</b>	Rwy Idg <b>8500</b>
	TDZE <b>142</b>
	Apt Elev <b>142</b>

# RNAV (RNP) Z RWY 28

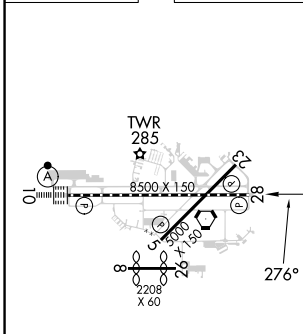
LAKELAND LINDER INTL (LAL)

<b>RNP AR APCH - GPS.</b> For uncompensated Baro-VNAV systems, procedure NA below -15°C or above 54°C.		<b>MISSED APPROACH:</b> Climb to 600 then climbing right turn to 2000 direct PLUMY and hold.	
---	--	--	--

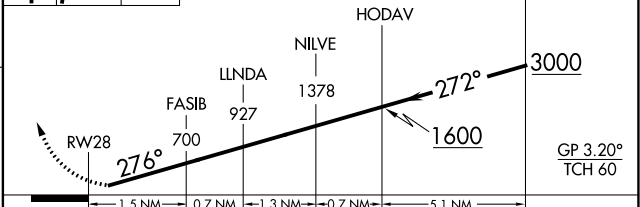
ATIS <b>118.025</b>	TAMPA APP CON <b>120.65 290.3</b>	LAKELAND TOWER <b>124.5 236.775</b>	GND CON <b>121.4</b>
------------------------	--------------------------------------	--	-------------------------



ELEV 142	<b>D</b>	TDZE 142
----------	----------	----------



600	2000	PLUMY	VGSI and RNAV glidepath not coincident (VGSI Angle 3.00/TCH 71).
-----	------	-------	---



CATEGORY	A	B	C	D
----------	---	---	---	---

RNP 0.30 DA	507/55 365 (400-1)			
-------------	--------------------	--	--	--

TDZ/CL Rwy 10  
HIRL Rwy 5-23 and 10-28

SE-3, 28 NOV 2024 to 26 DEC 2024

SE-3, 28 NOV 2024 to 26 DEC 2024

**AUTHORIZATION REQUIRED**