

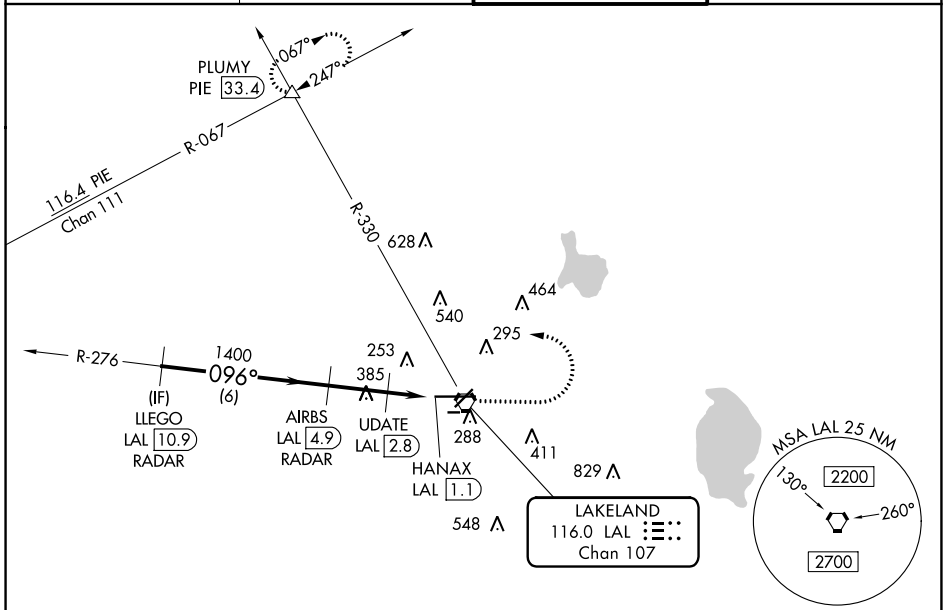
VORTAC LAL 116.0 Chan 107	APP CRS 096°	Rwy Idg 8500 TDZE 132 Apt Elev 142
---	------------------------	---

VOR RWY 10

LAKELAND LINDER INTL (LAL)

RADAR required for procedure entry. DME or RADAR required.		ALSF-2 	MISSED APPROACH: Climb to 1000 then climbing left turn to 2000 on heading 294° and on LAL VORTAC R-330 to PLUMY INT/ PIE 33.4 DME and hold.
<p> Circling NA to Rwys 8 and 26. Circling Rwy 28 NA at night. For inop ALS, increase S-10 Cat C/D visibility to 1 1/2 SM; increase UPDATE fix minimums S-10 Cat C/D visibility to RVR 6000.</p>			

ATIS 118.025	TAMPA APP CON 120.65 290.3	LAKELAND TOWER 124.5 236.775	GND CON 121.4
------------------------	--------------------------------------	--	-------------------------



SE-3, 28 NOV 2024 to 26 DEC 2024

SE-3, 28 NOV 2024 to 26 DEC 2024

ELEV 142		D TDZE 132		
<p>△ 1667</p> <p>LLEGO LAL (10.9) RADAR</p> <p>AIRBS LAL (4.9) RADAR</p> <p>UPDATE LAL (2.8)</p> <p>HANAX LAL (1.1)</p> <p>PLUMY LAL R-330 △</p> <p>VGSI and descent angles not coincident (VGSI Angle 3.00/TCH 71).</p> <p>2000 → 1400 → 700</p> <p>096° heading, 294° hdg</p> <p>2.98° TCH 52</p> <p>6 NM, 2.1 NM, 0.7, 1.1</p>				
CATEGORY	A	B	C	D
S-10	700/24	568 (600-1/2)	700-1 1/4	568 (600-1 1/4)
CIRCLING	700-1	558 (600-1)	720-1 1/8 578 (600-1 1/8)	840-2 1/4 698 (700-2 1/4)
UPDATE FIX MINIMUMS				
S-10	540/24	408 (400-1/2)	540/40	408 (400-3/4)
CIRCLING	600-1 458 (500-1)	660-1 518 (600-1)	720-1 1/2 578 (600-1 1/2)	840-2 1/4 698 (700-2 1/4)
TDZ/CL Rwy 10 HIRL Rwys 5-23 and 10-28				
FAF to MAP 3.8 NM				
Knots 60 90 120 150 180				
Min:Seq 3:48 2:32 1:54 1:31 1:16				