

(ZETTR4.ZETTR) 24137

ZETTR FOUR DEPARTURE (RNAV)

AL-940 (FAA)

GROSSE ILE MUNI (ONZ)
DETROIT/GROSSE ILE, MICHIGAN

DETROIT DEP CON
134.3 284.0
AWOS-3
119.675
CTAF
123.0

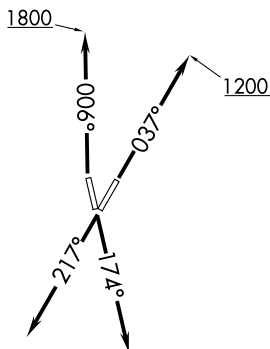
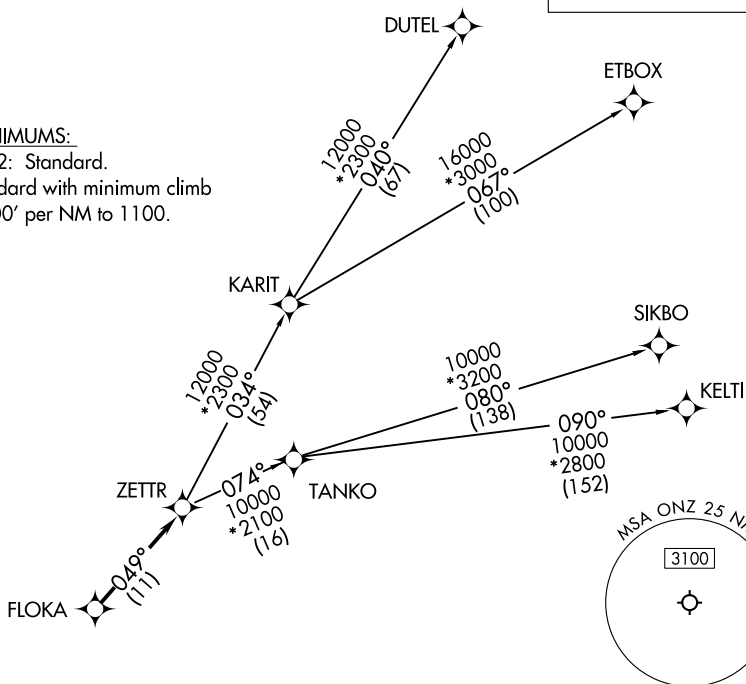
RNAV 1 - DME/DME/IRU or GPS.
RADAR required.

**TOP ALTITUDE:
ASSIGNED BY ATC**

TAKEOFF MINIMUMS:

Rwys 4, 17, 22: Standard.

Rwy 35: Standard with minimum climb
of 500' per NM to 1100.



DEPARTURE ROUTE DESCRIPTION

- TAKEOFF RUNWAY 4:** Climb on heading 037° to 1200 then as assigned by ATC, thence....
- TAKEOFF RUNWAY 17:** Climb on heading 174° or as assigned by ATC, thence....
- TAKEOFF RUNWAY 22:** Climb on heading 217° or as assigned by ATC, thence....
- TAKEOFF RUNWAY 35:** Climb on heading 006° to 1800 then as assigned by ATC, thence....

....for RADAR vectors to FLOKA, then on track 049° to ZETTR, then on (transition). Maintain ATC assigned altitude, expect filed altitude 10 minutes after departure.

- DUTEL TRANSITION (ZETTR4.DUTEL):**
- ETBOX TRANSITION (ZETTR4.ETBOX):**
- KELTI TRANSITION (ZETTR4.KELTI):**
- SIKBO TRANSITION (ZETTR4.SIKBO):**
- TANKO TRANSITION (ZETTR4.TANKO):**

NOTE: Turbojet departures at/above 10000, maintain 280K until advised by ATC.
NOTE: TANKO Transition: For use by CYYZ area arrivals only, or as assigned by ATC.

NOTE: Chart not to scale.

ZETTR FOUR DEPARTURE (RNAV)
(ZETTR4.ZETTR) 16MAY24

DETROIT/GROSSE ILE, MICHIGAN
GROSSE ILE MUNI (ONZ)

EC-1, 28 NOV 2024 to 26 DEC 2024

EC-1, 28 NOV 2024 to 26 DEC 2024