

WAAS CH 78240 W20A	APP CRS 196°	Rwy ldg 5529 TDZE 3908 Apt Elev 3908
---------------------------------	------------------------	---

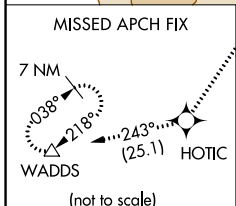
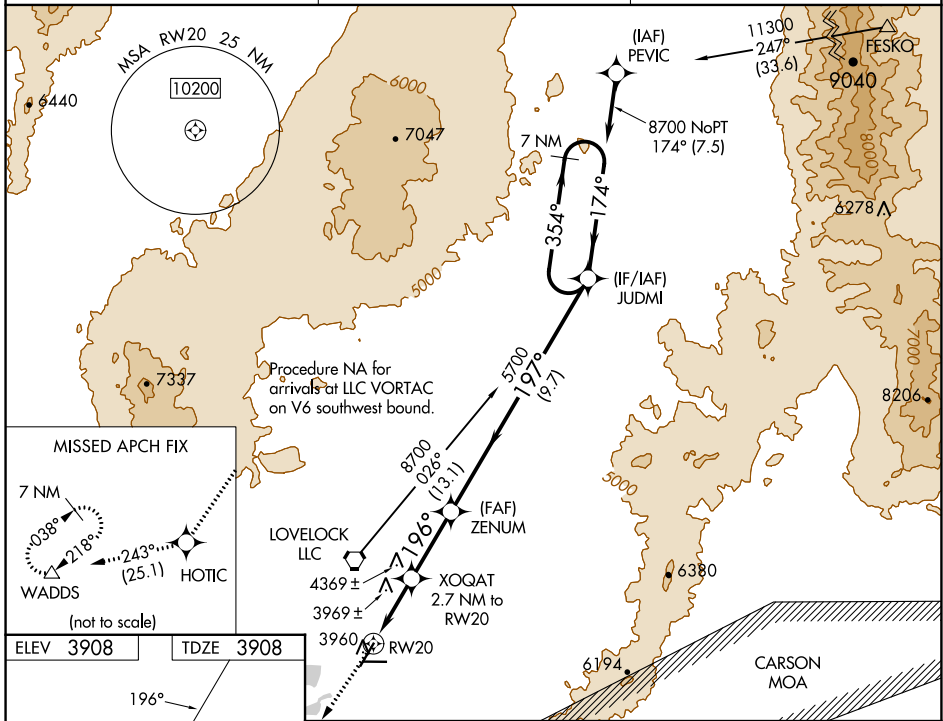
RNAV (GPS) RWY 20

DERBY FLD (LOL)

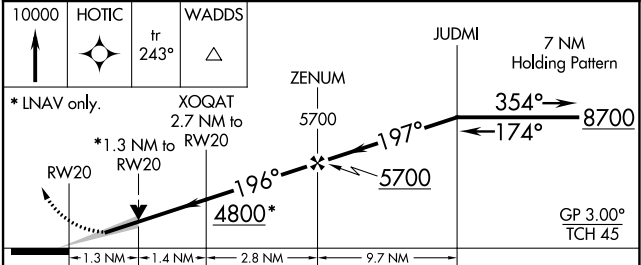
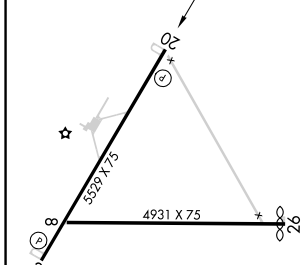
⚠ For uncompensated Baro-VNAV systems, LNAV/VNAV NA below -19°C (-2°F) or above 52°C (127°F). Circling NA northwest of Rwy 2-20. DME/DME RNP-0.3 NA.

MISSED APPROACH: Climb to 10000 direct HOTIC and on track 243° to WADDS and hold.

ASOS 120.675	OAKLAND CENTER 128.8 285.5	UNICOM 122.8 (CTAF)
------------------------	--------------------------------------	-------------------------------



ELEV 3908	TDZE 3908
------------------	------------------



CATEGORY	A	B	C	D
LPV DA		4158-1	250 (300-1)	
LNAV/VNAV DA		4249-1½	341 (400-1½)	
LNAV MDA	4360-1	452 (500-1)	4360-1¾	452 (500-1¾)
C CIRCLING	4360-1	452 (500-1)	4540-1¾ 632 (700-1¾)	4680-2½ 772 (800-2½)

REIL Rwy 2 and 20 **Ⓛ**
MIRL Rwy 2-20 **Ⓛ**

SW-4, 28 NOV 2024 to 26 DEC 2024

SW-4, 28 NOV 2024 to 26 DEC 2024