

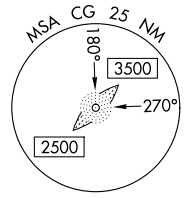
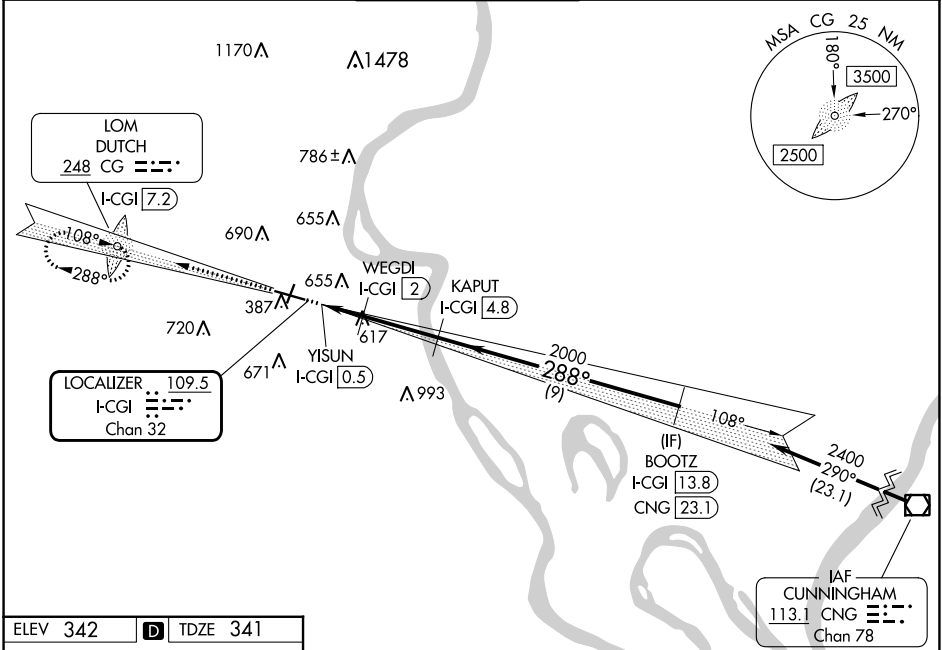
LOC/DME I-CGI 109.5 Chan 32	APP CRS 288°	Rwy Idg TDZE 341 Apt Elev 342
---	------------------------	---

LOC BC RWY 28

CAPE GIRARDEAU RGNL (CGI)

DME required.		ODALS	MISSED APPROACH: Climb to 2400 on I-CGI west course (288°) to DUTCH LOM/I-CGI 7.2 DME and hold.
▼ ▲ Rwy 28 helicopter visibility reduction below ¾ SM NA.		☘	

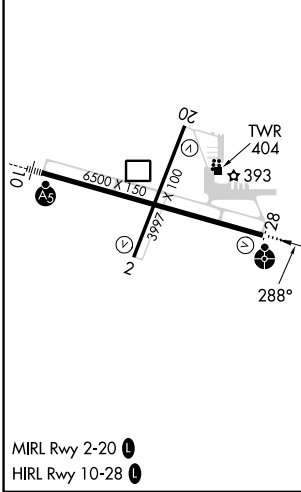
ASOS 120.55	MEMPHIS CENTER 133.65 292.15	CAPE GIRARDEAU TOWER * 125.525 (CTAF) 0	GND CON 124.7	UNICOM 122.95
-----------------------	--	--	-------------------------	-------------------------



NC-3, 28 NOV 2024 to 26 DEC 2024

NC-3, 28 NOV 2024 to 26 DEC 2024

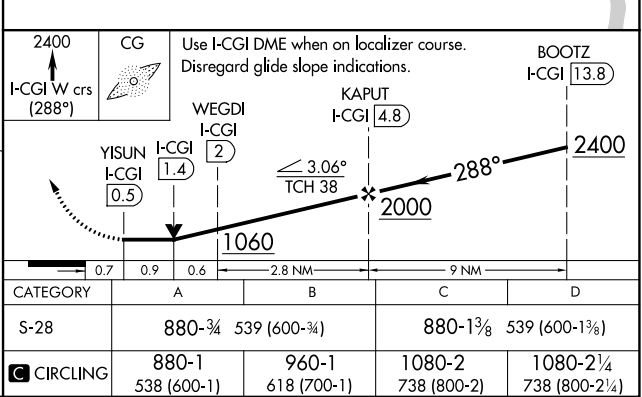
ELEV 342	D	TDZE 341
----------	----------	----------



CAPE GIRARDEAU, MISSOURI
Amdt 8D 16JUL20

Procedure NA for arrival on CNG VOR/DME airway radials 240 CW 346.

BACK COURSE



CAPE GIRARDEAU RGNL (CGI)
LOC BC RWY 28