

VOR/DME ALO <b>112.2</b> Chan <b>59</b>	APP CRS <b>176°</b>	Rwy Idg TDZE Apt Elev	<b>6003</b> <b>871</b> <b>873</b>
---	------------------------	-----------------------------	---

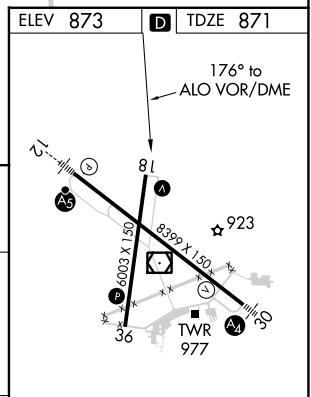
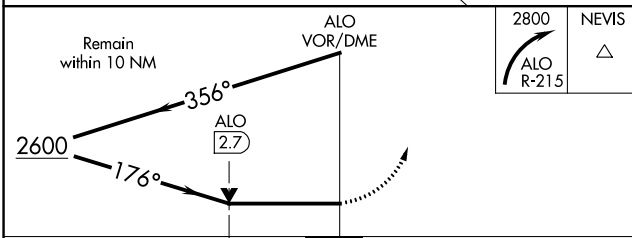
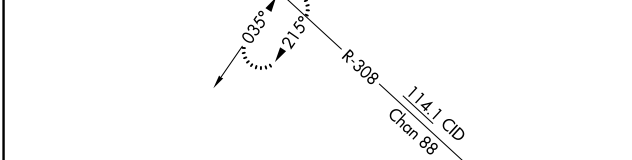
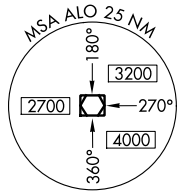
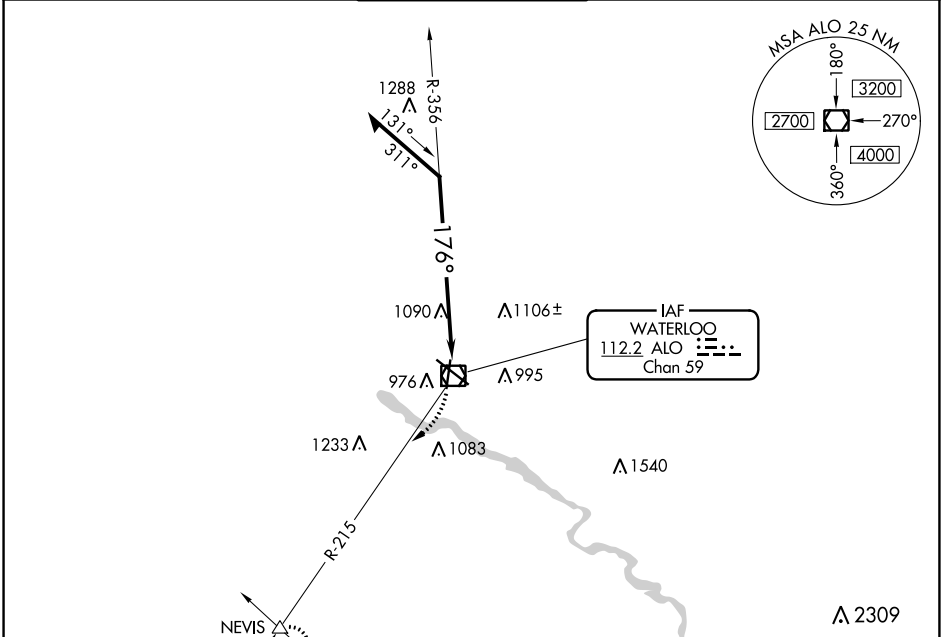
# VOR RWY 18

WATERLOO RGNL (A.LO)

**⚠** Rwy 18 helicopter visibility reduction below  $\frac{3}{4}$  SM AN.

**⚠** MISSED APPROACH: Climbing right turn to 2800 on ALO VOR/DME R-215 to NEVIS INT and hold.

ATIS <b>120.65</b>	WATERLOO APP CON * <b>118.9 251.15</b>	WATERLOO TOWER * <b>125.075 (CTAF) 257.8</b>	GND CON <b>121.9 269.1</b>	UNICOM <b>122.95</b>
-----------------------	---	---	-------------------------------	-------------------------



CATEGORY	A	B	C	D
	1600-1	729 (800-1)	1600-2	729 (800-2)
<b>C</b> CIRCLING	1600-1	727 (800-1)	1600-2	1600-2 1/4
			727 (800-2)	727 (800-2 1/4)

ELEV 873 TDZE 871

176° to ALO VOR/DME

HIRL Rwy 12-30  
MIRL Rwy 18-36  
REIL Rwys 18 and 36

NC-3, 28 NOV 2024 to 26 DEC 2024

NC-3, 28 NOV 2024 to 26 DEC 2024