

EASTOVER, SOUTH CAROLINA

ILS or LOC/DME RWY 32

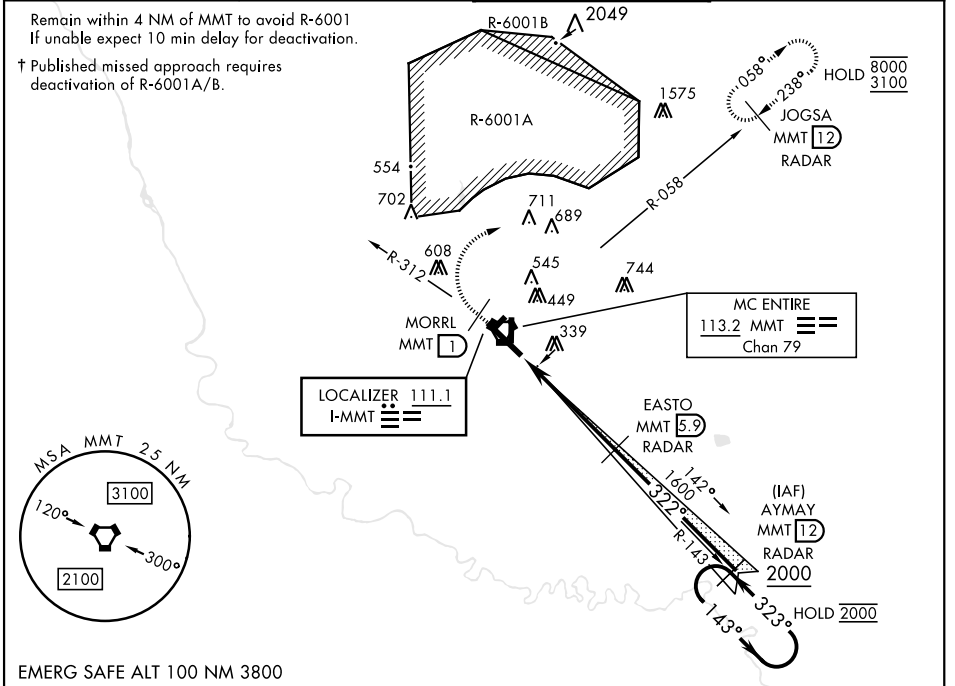
LOC I-MMT 111.1	APCH CRS 322°	Rwy Idg 9012
		TDZE 243
		Arprt Elev 254

[USAF]

MC ENTIRE JNGB (KMMT)

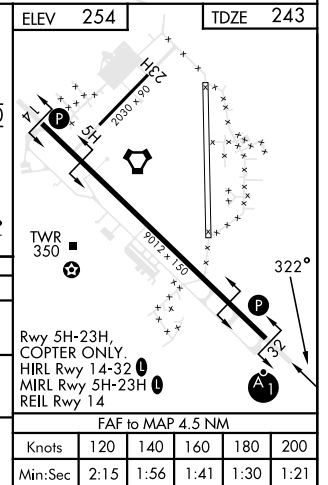
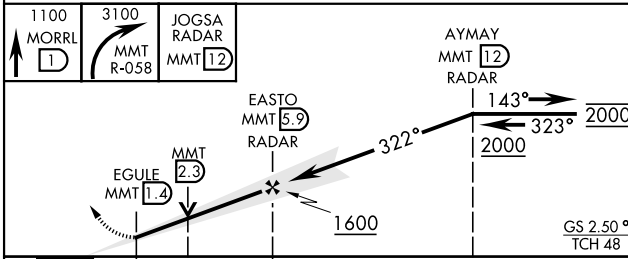
<p>▼ * When ALS inop, increase RVR to 40, and vis to ¾ mile. ** When ALS inop, increase RVR to 55, and vis to 1 mile.</p>	<p>ALSF-1 </p>	<p>† MISSED APPROACH: Climb to 1100 direct MORRL/ 1 DME then climbing right to 3100 intercept MMT R-058 direct JOGSA/12 DME and hold.</p>
---	--------------------	---

<p>ATIS ★ 327.05</p>	<p>SHAW APP CON 125.4 318.1</p>	<p>TOWER ★ 132.4 (CTAF) 0253.5</p>	<p>GND CON 127.625 226.675</p>
---------------------------------	--	---	---



SE-2, 28 NOV 2024 to 26 DEC 2024

SE-2, 28 NOV 2024 to 26 DEC 2024



CATEGORY	A	B	C	D	E	
S-ILS 32 *	443/24		200	(200-½)		
S-LOC 32 **	620/24 377 (400-½)		620/35	377 (400-¾)		
CIRCLING	740-1 486 (500-1)	840-1 586 (600-1)	880-1¾ 626 (700-1¾)	940-2¼ 686 (700-2¼)	1020-2¾ 766 (800-2¾)	
	FAF to MAP 4.5 NM					
	Knots	120	140	160	180	200
	Min:Sec	2:15	1:56	1:41	1:30	1:21

EASTOVER, SOUTH CAROLINA
Amdt 4 25MAY17

33°55'N-80°48'W

MC ENTIRE JNGB (KMMT)

ILS or LOC/DME RWY 32