

EASTOVER, SOUTH CAROLINA

TACAN RWY 14

VORTAC MMT 113.2 Chan 79	APCH CRS 132°	Rwy Idg TDZE 251 Arprt Elev 254
--	-------------------------	---

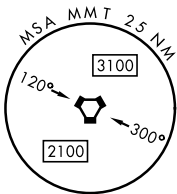
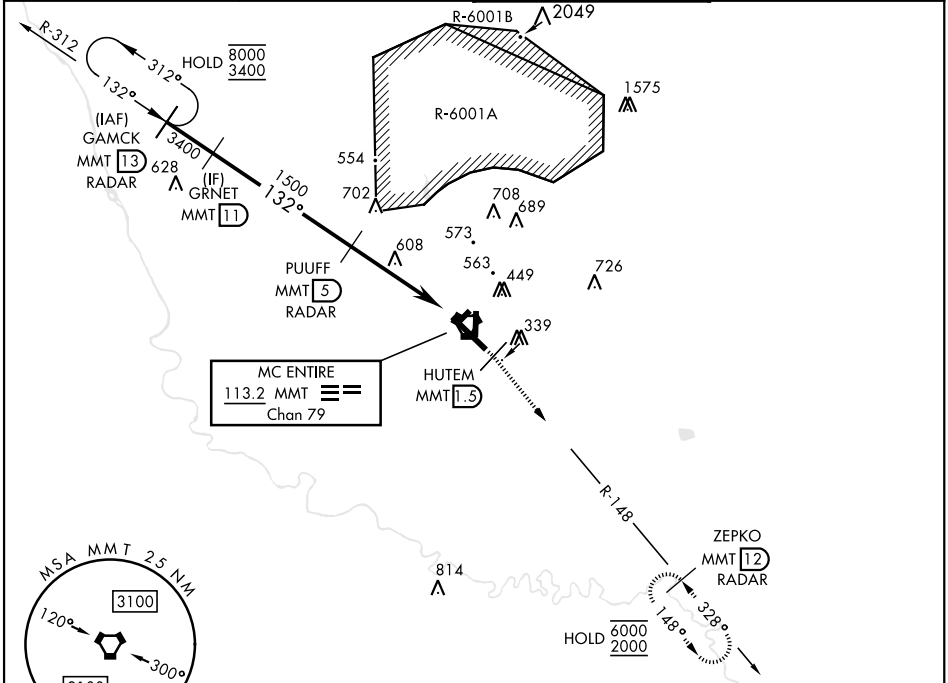
[USAF]

MC ENTIRE JNGB (KMMT)

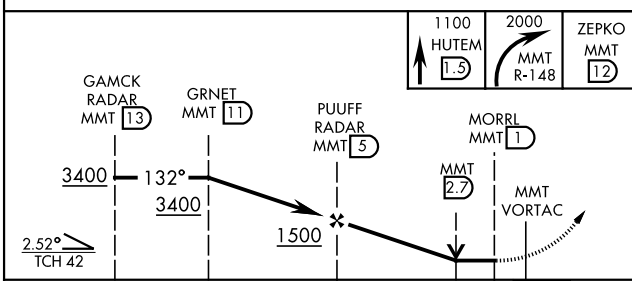
* Circling to Rwy 05H-23H not authorized at night.

MISSED APPROACH: Climb to 1100 direct HUTEM/1.5 DME then climbing right turn to 2000 intercept MMT R-148 direct ZEPKO/12 DME and hold.

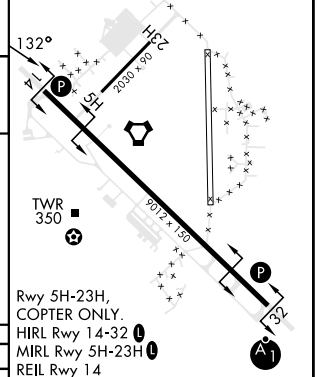
ATIS ★ 327.05	SHAW APP CON 125.4 318.1	TOWER ★ 132.4 (CTAF) 253.5	GND CON 127.625 226.675
-------------------------	------------------------------------	--------------------------------------	-----------------------------------



EMERG SAFE ALT 100 NM 3800



ELEV	254	TDZE	251
------	-----	------	-----



CATEGORY	A	B	C	D	E
S-14	880-1	629 (700-1)	880-1 $\frac{3}{4}$	629 (700-1 $\frac{3}{4}$)	
CIRCLING*	880-1	626 (700-1)	880-1 $\frac{3}{4}$	1020-2 $\frac{1}{2}$	1020-2 $\frac{3}{4}$
			626 (700-1 $\frac{3}{4}$)	766 (800-2 $\frac{1}{2}$)	766 (800-2 $\frac{3}{4}$)

FAF to MAP 4.0 NM					
Knots	60	90	120	150	180
Min:Sec	4:00	2:40	2:00	1:36	1:20

EASTOVER, SOUTH CAROLINA

33°55'N-80°48'W

MC ENTIRE JNGB (KMMT)

Amdt 1 25MAY17

TACAN RWY 14

SE-2, 28 NOV 2024 to 26 DEC 2024

SE-2, 28 NOV 2024 to 26 DEC 2024